

Product datasheet for **TA590409**

SON Rabbit Polyclonal Antibody

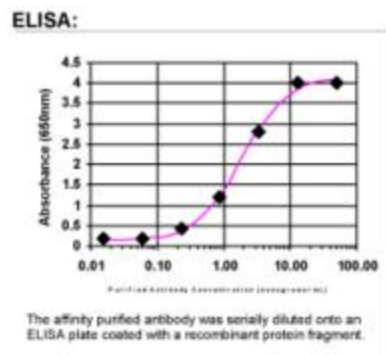
Product data:

Product Type:	Primary Antibodies
Applications:	ELISA
Recommended Dilution:	WB: 1:5000-1:20000; ELISA: 1:100-1:2000
Reactivity:	Human
Host:	Rabbit
Isotype:	IgG
Clonality:	Polyclonal
Immunogen:	DNA immunization. This antibody is specific for the Middle Region of the target protein.
Formulation:	20 mM Potassium Phosphate, 150 mM Sodium Chloride, pH 7.0
Concentration:	1.06861 mg/ml
Purification:	Purified from mouse ascites fluids or tissue culture supernatant by affinity chromatography (protein A/G)
Conjugation:	Unconjugated
Storage:	Store at -20°C as received.
Stability:	Stable for 12 months from date of receipt.
Gene Name:	SON DNA and RNA binding protein
Database Link:	NP_620305 Entrez Gene 6651 Human P18583
Background:	SON represses hepatitis B virus (HBV) core promoter activity and transcription of HBV genes and production of HBV virions. SON binds to the consensus DNA sequence: 5'-GA[GT]AN[CG][AG]CC-3'. Might protect cells from apoptosis. Might be involved in pre-mRNA splicing (By similarity).
Synonyms:	BASS1; C21orf50; DBP-5; NREBP; SON3
Note:	This antibody was generated by SDIX's Genomic Antibody Technology® (GAT). Learn about GAT



[View online »](#)

Product images:



ELISA: SON Antibody