

Product datasheet for **TA590402**

MARVELD2 Rabbit Polyclonal Antibody

Product data:

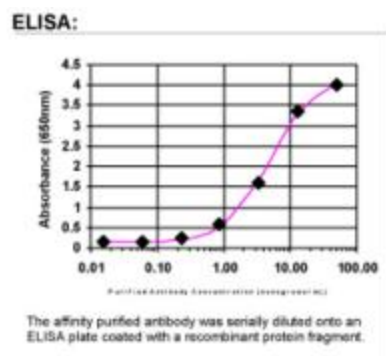
Product Type:	Primary Antibodies
Applications:	ELISA
Recommended Dilution:	WB: 1:5000-1:20000; ELISA: 1:100-1:2000
Reactivity:	Human
Host:	Rabbit
Isotype:	IgG
Clonality:	Polyclonal
Immunogen:	DNA immunization. This antibody is specific for the N Terminus Region of the target protein.
Formulation:	20 mM Potassium Phosphate, 150 mM Sodium Chloride, pH 7.0
Concentration:	0.86277 mg/ml
Purification:	Purified from mouse ascites fluids or tissue culture supernatant by affinity chromatography (protein A/G)
Conjugation:	Unconjugated
Storage:	Store at -20°C as received.
Stability:	Stable for 12 months from date of receipt.
Gene Name:	MARVEL domain containing 2
Database Link:	NP_653325 Entrez Gene 153562 Human Q8N4S9
Background:	Tight junctions (TJ) prevent leakage of solutes through the paracellular pathway of epithelial cells. MARVELD2, or tricellulin (TRIC), is an integral membrane protein concentrated at the vertically oriented TJ strands of tricellular contacts (Ikenouchi et al., 2005 [PubMed 16365161]). [supplied by OMIM]
Synonyms:	DFNB49; FLJ30532; MARVD2; MARVEL (membrane-associating) domain containing 2; MARVEL domain containing 2; MRVLDC2; Tric; tricellulin
Note:	This antibody was generated by SDIX's Genomic Antibody Technology® (GAT). Learn about GAT



[View online »](#)

Protein Families: Transmembrane

Product images:



ELISA: MARVELD2 Antibody