

## Product datasheet for **TA590401**

### Kallikrein 11 (KLK11) Rabbit Polyclonal Antibody

#### Product data:

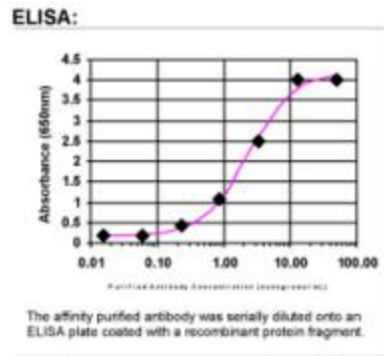
Product Type:	Primary Antibodies
Applications:	ELISA, IF, IHC
Recommended Dilution:	ELISA: 1:100-1:2000; IHC: 1:650; IF: 1:162
Reactivity:	Human
Host:	Rabbit
Isotype:	IgG
Clonality:	Polyclonal
Immunogen:	DNA immunization. This antibody is specific for the Middle Region of the target protein.
Formulation:	20 mM Potassium Phosphate, 150 mM Sodium Chloride, pH 7.0
Concentration:	0.96715 mg/ml
Purification:	Purified from mouse ascites fluids or tissue culture supernatant by affinity chromatography (protein A/G)
Conjugation:	Unconjugated
Storage:	Store at -20°C as received.
Stability:	Stable for 12 months from date of receipt.
Gene Name:	kallikrein related peptidase 11
Database Link:	<a href="#">NP_659196</a> <a href="#">Entrez Gene 11012 Human</a> <a href="#">Q9UBX7</a>
Background:	Hippostasin, also known as KLK11, is a kallikrein-like serine protease, which has two alternatively spliced isoforms, brain-type and prostate-type. Hippostasin plays a role in the prostate, including reproductive and/or tumorigenic functions. Elevated serum levels of hK11 were found in 70% of women with ovarian cancer and in 60% of men with prostate cancer. Analysis of the KLK11 biomarker in serum may aid in the diagnosis and monitoring of ovarian and prostatic carcinoma.
Synonyms:	PRSS20; TLSP
Note:	This antibody was generated by SDIX's Genomic Antibody Technology® (GAT). <a href="#">Learn about GAT</a>



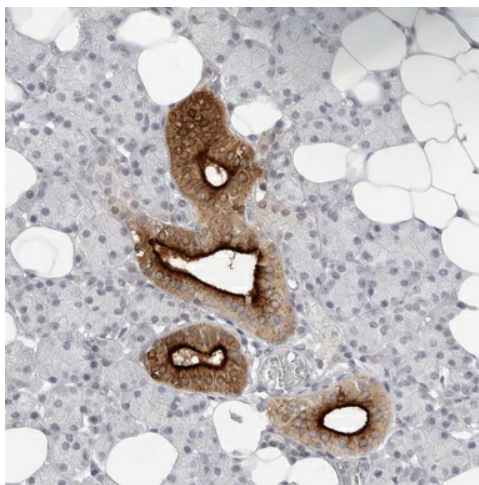
[View online »](#)

Protein Families: Druggable Genome, Protease, Secreted Protein

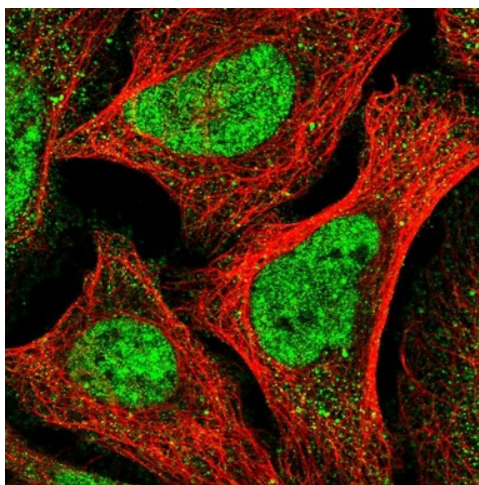
**Product images:**



ELISA: Kallikrein-11 Antibody



Immunohistochemical staining of human salivary gland shows strong cytoplasmic and membranous positivity in ducts. This validation was performed by Protein Atlas and the presentation of data is for informational purposes only.



Immunofluorescent staining of human cell line U-2 OS shows positivity in nucleus but not nucleoli. This validation was performed by Protein Atlas and the presentation of data is for informational purposes only.