

## Product datasheet for **TA590399**

### GPR125 (ADGRA3) Rabbit Polyclonal Antibody

#### Product data:

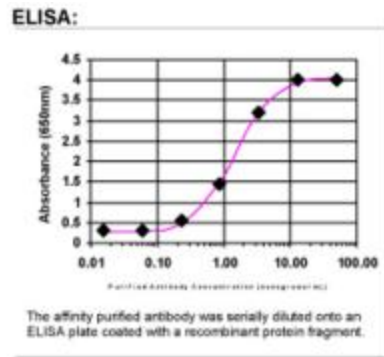
|                       |  |
|-----------------------|--|
| Product Type:         | Primary Antibodies   |
| Applications:         | ELISA  |
| Recommended Dilution: | ELISA: 1:100-1:2000  |
| Reactivity:           | Human  |
| Host:                 | Rabbit   |
| Isotype:              | IgG  |
| Clonality:            | Polyclonal   |
| Immunogen:            | DNA immunization. This antibody is specific for the Middle Region of the target protein.   |
| Formulation:          | 20 mM Potassium Phosphate, 150 mM Sodium Chloride, pH 7.0  |
| Concentration:        | 0.94599 mg/ml  |
| Purification:         | Purified from mouse ascites fluids or tissue culture supernatant by affinity chromatography (protein A/G)  |
| Conjugation:          | Unconjugated   |
| Storage:              | Store at -20°C as received.  |
| Stability:            | Stable for 12 months from date of receipt.   |
| Gene Name:            | adhesion G protein-coupled receptor A3   |
| Database Link:        | <a href="#">NP_660333</a><br><a href="#">Entrez Gene 166647 Human</a><br><a href="#">Q8IWK6</a>  |
| Background:           | GPR125 is an orphan receptor which has a leucine rich repeat (LRR), an immunoglobulin (Ig) domain, and a hormone-binding domain (HBD). The Ig domain shows similarities to motilin and tinitin, while the LRR domain shows similarities to LRIG1 and SLIT1-2. ESTs have been isolated primarily from amnion, connective tissue, ear, embryo, eye, ganglion, heart, lung, placenta, and skin libraries. |
| Synonyms:             | GPR125; PGR21; TEM5L   |
| Note:                 | This antibody was generated by SDIX's Genomic Antibody Technology® (GAT). <a href="#">Learn about GAT</a>  |



[View online »](#)

Protein Families: Druggable Genome, GPCR, Transmembrane

**Product images:**



ELISA: GPCR GPR125 Antibody