

Product datasheet for **TA590398**

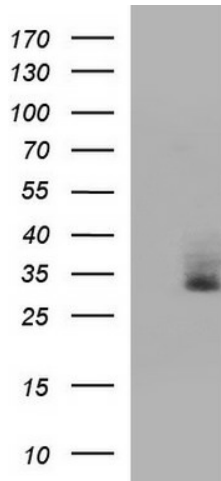
STOML3 Rabbit Polyclonal Antibody

Product data:

Product Type:	Primary Antibodies
Applications:	ELISA, IHC, WB
Recommended Dilution:	WB 1:20000, IHC 1:150,ELISA 1:100-1:2000
Reactivity:	Human
Host:	Rabbit
Isotype:	IgG
Clonality:	Polyclonal
Immunogen:	DNA immunization. This antibody is specific for the C Terminus Region of the target protein.
Formulation:	20 mM Potassium Phosphate, 150 mM Sodium Chloride, pH 7.0
Concentration:	0.9mg/ml
Purification:	Purified from mouse ascites fluids or tissue culture supernatant by affinity chromatography (protein A/G)
Conjugation:	Unconjugated
Storage:	Store at -20°C as received.
Stability:	Stable for 12 months from date of receipt.
Gene Name:	stomatin like 3
Database Link:	NP_660329 Entrez Gene 161003 Human Q8TAV4
Synonyms:	Epb7.2l; SRO
Note:	This antibody was generated by SDIX's Genomic Antibody Technology® (GAT). Learn about GAT
Protein Families:	Transmembrane



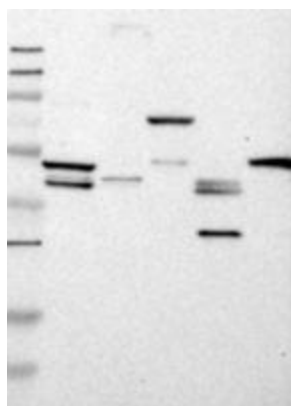
[View online »](#)

Product images:


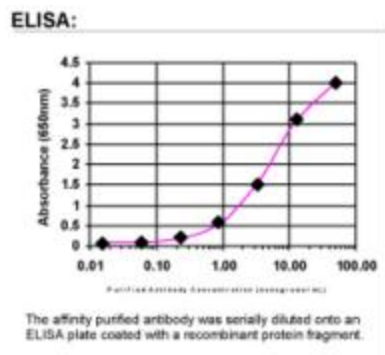
HEK293T cells were transfected with the pCMV6-ENTRY control (Cat# [PS100001], Left lane) or pCMV6-ENTRY STOML3 (Cat# [RC206682], Right lane) cDNA for 48 hrs and lysed. Equivalent amounts of cell lysates (5 ug per lane) were separated by SDS-PAGE and immunoblotted with anti-STOML3 (Cat# TA590398). Positive lysates [LY408009] (100ug) and [LC408009] (20ug) can be purchased separately from OriGene.



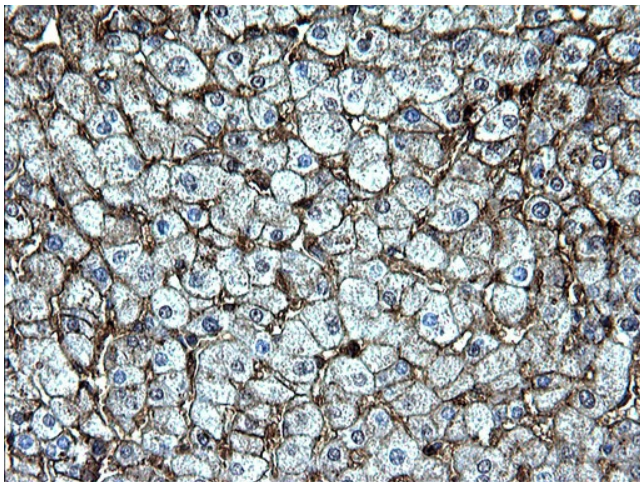
Western Blot: STOML3 Antibody - Western Blot was performed using affinity purified SEQer STOML3 antibody, aa (192-291) antibody. The lanes contain 5-30ug of a whole cell extract. Final concentration of antibodies = 0.1ug/ml (1:10,000 dilution). The blot was probed overnight with the SEQer STOML3 antibody, aa (192-291) antibody. Blot was then washed according to protocol and probed with goat-anti-Rabbit-HRP conjugate at 1:5000 dilution, washed and developed using chemiluminescence (film exposure 5-30sec). The protein was detected as represented by the band shown.



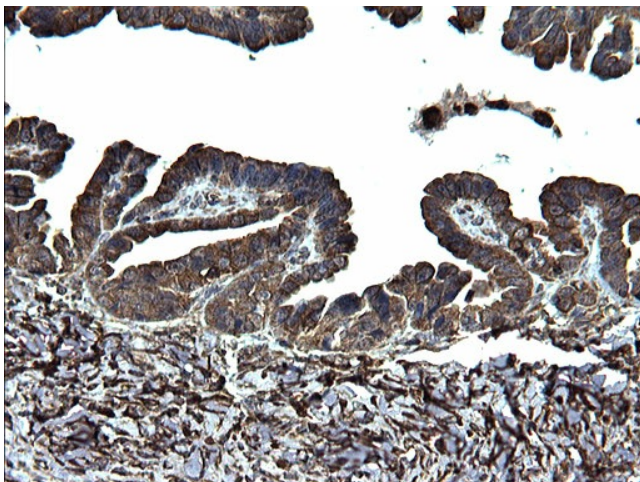
Western Blot: STOML3 Antibody - Samples: Lane 1, Marker: 250, 130, 95, 72, 55, 36, 28, 17, 11 Lane 2, RT-4 Lane 3, U-251MG sp Lane 4, Human Plasma Lane 5, Liver Lane 6, Tonsil, Target weight: 32 Validation score: 2 Validation description: Supportive - Band of predicted size in kDa (+/-20%) with additional bands present.



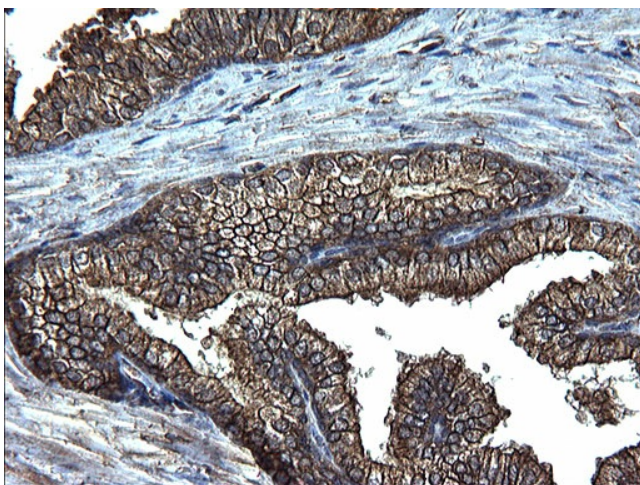
ELISA: STOML3 Antibody



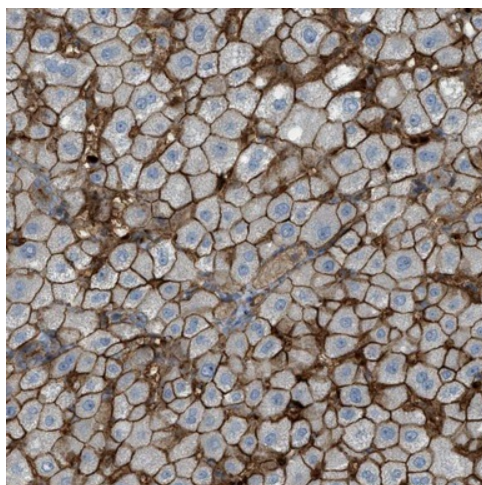
Immunohistochemical staining of paraffin-embedded Human liver tissue using anti-STOML3 Rabbit Polyclonal antibody. (TA590398)



Immunohistochemical staining of paraffin-embedded Adenocarcinoma of Human ovary tissue using anti-STOML3 Rabbit Polyclonal antibody. (TA590398)



Immunohistochemical staining of paraffin-embedded Human prostate tissue using anti-STOML3 Rabbit Polyclonal antibody. (TA590398)



Immunohistochemical staining of human liver shows membranous positivity in hepatocytes. Antibody dilution: 1:150. Image and statement courtesy of the Human Protein Atlas (HPA).