

## Product datasheet for **TA590396**

### **PALM2AKAP2 Rabbit Polyclonal Antibody**

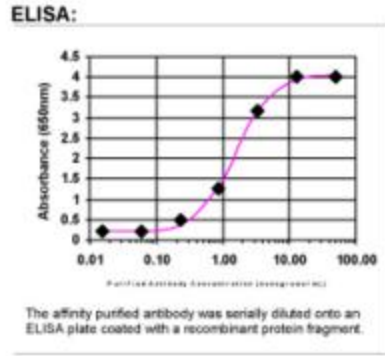
#### **Product data:**

<b>Product Type:</b>	Primary Antibodies
<b>Applications:</b>	ELISA
<b>Recommended Dilution:</b>	ELISA: 1:100-1:2000
<b>Reactivity:</b>	Human
<b>Host:</b>	Rabbit
<b>Isotype:</b>	IgG
<b>Clonality:</b>	Polyclonal
<b>Immunogen:</b>	DNA immunization. This antibody is specific for the Middle Region of the target protein.
<b>Formulation:</b>	20 mM Potassium Phosphate, 150 mM Sodium Chloride, pH 7.0
<b>Concentration:</b>	1.27737 mg/ml
<b>Purification:</b>	Purified from mouse ascites fluids or tissue culture supernatant by affinity chromatography (protein A/G)
<b>Conjugation:</b>	Unconjugated
<b>Storage:</b>	Store at -20°C as received.
<b>Stability:</b>	Stable for 12 months from date of receipt.
<b>Gene Name:</b>	PALM2 and AKAP2 fusion
<b>Database Link:</b>	<a href="#">NP_671492</a> <a href="#">Entrez Gene 445815 Human</a> <a href="#">Q9Y2D5</a>
<b>Synonyms:</b>	AKAP2
<b>Note:</b>	This antibody was generated by SDIX's Genomic Antibody Technology® (GAT). <a href="#">Learn about GAT</a>



[View online »](#)

Product images:



ELISA: PALM2 Antibody - Affinity Purified