

## Product datasheet for **TA590391**

### **NIRF (UHRF2) Rabbit Polyclonal Antibody**

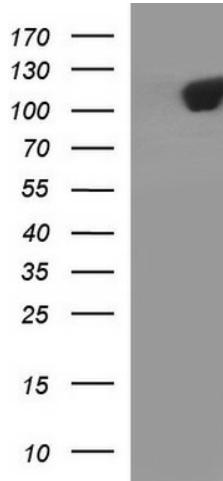
#### **Product data:**

<b>Product Type:</b>	Primary Antibodies
<b>Applications:</b>	ELISA, WB
<b>Recommended Dilution:</b>	WB 1:20000,ELISA 1:100-1:2000
<b>Reactivity:</b>	Human
<b>Host:</b>	Rabbit
<b>Isotype:</b>	IgG
<b>Clonality:</b>	Polyclonal
<b>Immunogen:</b>	DNA immunization. This antibody is specific for the N Terminus Region of the target protein.
<b>Formulation:</b>	20 mM Potassium Phosphate, 150 mM Sodium Chloride, pH 7.0
<b>Concentration:</b>	1 mg/ml
<b>Purification:</b>	Purified from mouse ascites fluids or tissue culture supernatant by affinity chromatography (protein A/G)
<b>Conjugation:</b>	Unconjugated
<b>Storage:</b>	Store at -20°C as received.
<b>Stability:</b>	Stable for 12 months from date of receipt.
<b>Gene Name:</b>	ubiquitin like with PHD and ring finger domains 2
<b>Database Link:</b>	<a href="#">NP_690856</a> <a href="#">Entrez Gene 115426 Human</a> <a href="#">Q96PU4</a>
<b>Background:</b>	This gene encodes a nuclear protein which is involved in cell-cycle regulation. The encoded protein is a ubiquitin-ligase capable of ubiquinating PCNP (PEST-containing nuclear protein), and together they may play a role in tumorigenesis.
<b>Synonyms:</b>	NIRF; RNF107; TDRD23; URF2
<b>Note:</b>	This antibody was generated by SDIX's Genomic Antibody Technology® (GAT). <a href="#">Learn about GAT</a>
<b>Protein Families:</b>	Druggable Genome, Transcription Factors



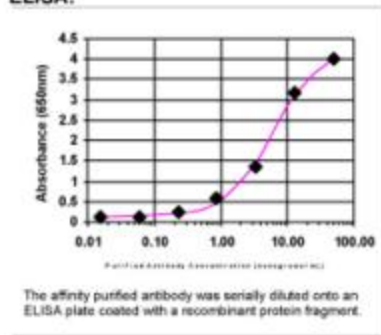
[View online »](#)

Product images:



HEK293T cells were transfected with the pCMV6-ENTRY control (Left lane) or pCMV6-ENTRY UHRF2 ([RC219579], Right lane) cDNA for 48 hrs and lysed. Equivalent amounts of cell lysates (5 ug per lane) were separated by SDS-PAGE and immunoblotted with anti-UHRF2. Positive lysates [LY407258] (100ug) and [LC407258] (20ug) can be purchased separately from OriGene.

ELISA:



ELISA: NIRF Antibody