

## Product datasheet for **TA590390**

### CD95 (FAS) Rabbit Polyclonal Antibody

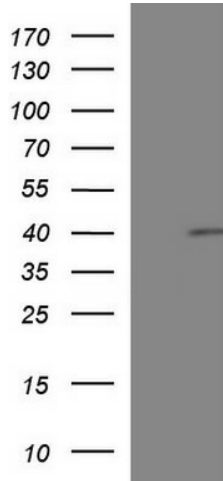
#### Product data:

Product Type:	Primary Antibodies
Applications:	ELISA, WB
Recommended Dilution:	WB 1:5000~20000, ELISA 1:100-1:2000
Reactivity:	Human
Host:	Rabbit
Isotype:	IgG
Clonality:	Polyclonal
Immunogen:	DNA immunization. This antibody is specific for the C Terminus Region of the target protein.
Formulation:	20 mM Potassium Phosphate, 150 mM Sodium Chloride, pH 7.0
Concentration:	0.85mg/ml
Purification:	Purified from mouse ascites fluids or tissue culture supernatant by affinity chromatography (protein A/G)
Conjugation:	Unconjugated
Storage:	Store at -20°C as received.
Stability:	Stable for 12 months from date of receipt.
Gene Name:	Fas cell surface death receptor
Database Link:	<a href="#">NP_690610</a> <a href="#">Entrez Gene 355 Human P25445</a>
Synonyms:	ALPS1A; APO-1; APT1; CD95; FAS1; FASTM; TNFRSF6
Note:	This antibody was generated by SDIX's Genomic Antibody Technology® (GAT). <a href="#">Learn about GAT</a>
Protein Families:	Druggable Genome, ES Cell Differentiation/IPS, Secreted Protein
Protein Pathways:	Allograft rejection, Alzheimer's disease, Apoptosis, Autoimmune thyroid disease, Cytokine-cytokine receptor interaction, Graft-versus-host disease, MAPK signaling pathway, Natural killer cell mediated cytotoxicity, p53 signaling pathway, Pathways in cancer, Type I diabetes mellitus

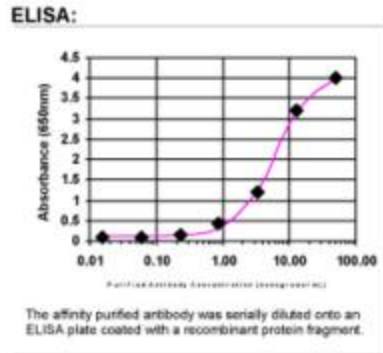


[View online »](#)

Product images:



HEK293T cells were transfected with the pCMV6-ENTRY control (Cat# [PS100001], Left lane) or pCMV6-ENTRY FAS (Cat# [RC215929], Right lane) cDNA for 48 hrs and lysed. Equivalent amounts of cell lysates (5 ug per lane) were separated by SDS-PAGE and immunoblotted with anti-FAS (Cat# TA590390). Positive lysates [LY407241] (100ug) and [LC407241] (20ug) can be purchased separately from OriGene.



ELISA: FAS Antibody