

## Product datasheet for **TA590381**

### FOG1 (ZFPM1) Rabbit Polyclonal Antibody

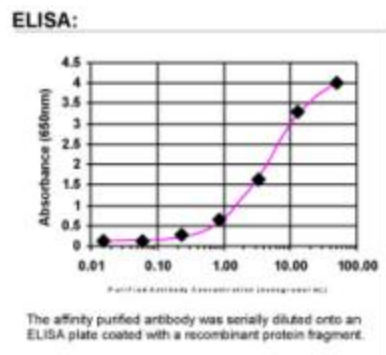
#### Product data:

Product Type:	Primary Antibodies
Applications:	ELISA
Recommended Dilution:	WB: 1:5000-1:20000; ELISA: 1:100-1:2000
Reactivity:	Human
Host:	Rabbit
Isotype:	IgG
Clonality:	Polyclonal
Immunogen:	DNA immunization. This antibody is specific for the N Terminus Region of the target protein.
Formulation:	20 mM Potassium Phosphate, 150 mM Sodium Chloride, pH 7.0
Concentration:	1.24526 mg/ml
Purification:	Purified from mouse ascites fluids or tissue culture supernatant by affinity chromatography (protein A/G)
Conjugation:	Unconjugated
Storage:	Store at -20°C as received.
Stability:	Stable for 12 months from date of receipt.
Gene Name:	zinc finger protein, FOG family member 1
Database Link:	<a href="#">NP_722520</a> <a href="#">Entrez Gene 161882 Human</a> <a href="#">Q8IX07</a>
Background:	FOG1/ZFPM1 was identified in a yeast two-hybrid screen for GATA-1 interacting proteins. GATA-1 is zinc finger transcription factor whose expression is restricted to hematopoietic cells and plays an essential role in erythroid development. FOG1/ZFPM1 is highly expressed in erythroid cells and megakaryocytes and appears to play both a GATA-1-dependent and independent role in erythropoiesis and megakaryopoiesis. FOG1/ZFPM1 associates with GATA-1 as well as GATA-2 and GATA-3 as a heterodimer to activate or repress transcription.
Synonyms:	FOG; FOG1; ZC2HC11A; ZNF89A; ZNF408
Note:	This antibody was generated by SDIX's Genomic Antibody Technology® (GAT). <a href="#">Learn about GAT</a>



[View online »](#)

## Product images:



ELISA: ZFPM1 Antibody