

Product datasheet for **TA590377**

RNF39 Rabbit Polyclonal Antibody

Product data:

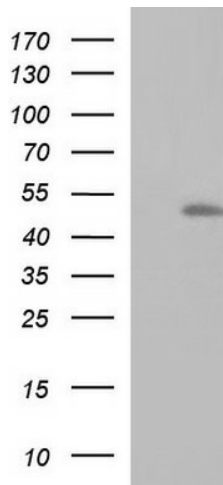
Product Type:	Primary Antibodies
Applications:	ELISA, IF, IHC, WB
Recommended Dilution:	WB 1:5000~20000, IHC 1:150, ELISA 1:100-1:2000
Reactivity:	Human, Dog, Mouse
Host:	Rabbit
Isotype:	IgG
Clonality:	Polyclonal
Immunogen:	DNA immunization. This antibody is specific for the N Terminus Region of the target protein.
Formulation:	20 mM Potassium Phosphate, 150 mM Sodium Chloride, pH 7.0
Concentration:	1.17mg/ml
Purification:	Purified from mouse ascites fluids or tissue culture supernatant by affinity chromatography (protein A/G)
Conjugation:	Unconjugated
Storage:	Store at -20°C as received.
Stability:	Stable for 12 months from date of receipt.
Gene Name:	ring finger protein 39
Database Link:	NP_739575 Entrez Gene 386454 Mouse Entrez Gene 488344 Dog Entrez Gene 80352 Human Q9H2S5
Background:	RNF39 lies within the major histocompatibility complex class I region on chromosome 6. Studies of a similar rat protein suggest that this gene encodes a protein that plays a role in an early phase of synaptic plasticity. Alternative splicing results in three transcript variants encoding different isoforms. May play a role in prolonged long term-potential (LTP) maintenance. Contains 1 RING-type zinc finger.
Synonyms:	HZF; HZFW; LIRF
Note:	This antibody was generated by SDIX's Genomic Antibody Technology® (GAT). Learn about GAT



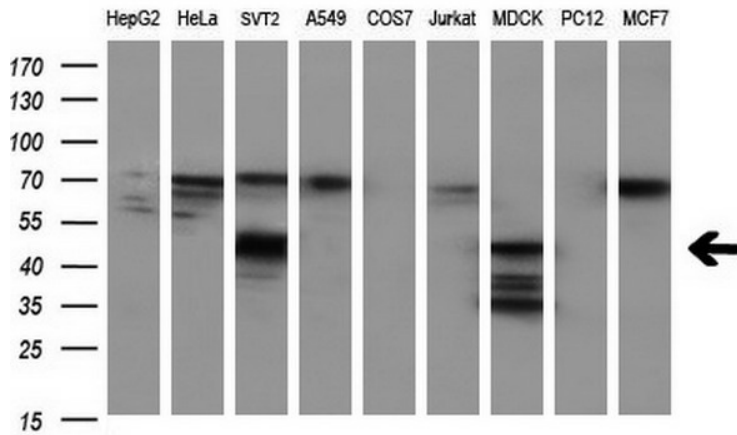
[View online »](#)

Protein Families: Druggable Genome

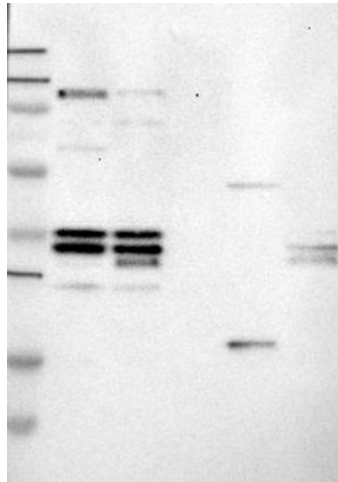
Product images:



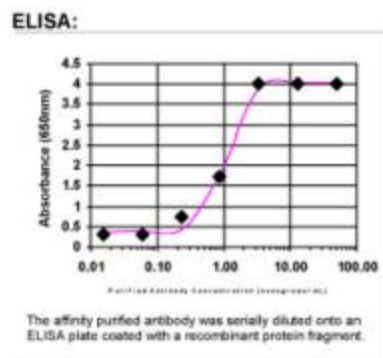
HEK293T cells were transfected with the pCMV6-ENTRY control (Cat# [PS100001], Left lane) or pCMV6-ENTRY RNF39 (Cat# [RC216446], Right lane) cDNA for 48 hrs and lysed. Equivalent amounts of cell lysates (5 ug per lane) were separated by SDS-PAGE and immunoblotted with anti-RNF39(Cat# TA590377).



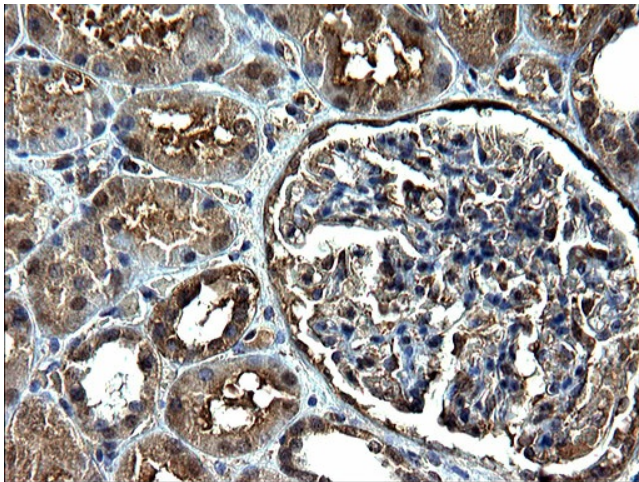
Western blot analysis of extracts (35ug) from 9 different cell lines by using anti-RNF39 polyclonal antibody (HepG2: human; HeLa: human; SVT2: mouse; A549: human; COS7: monkey; Jurkat: human; MDCK: canine; PC12: rat; MCF7: human).



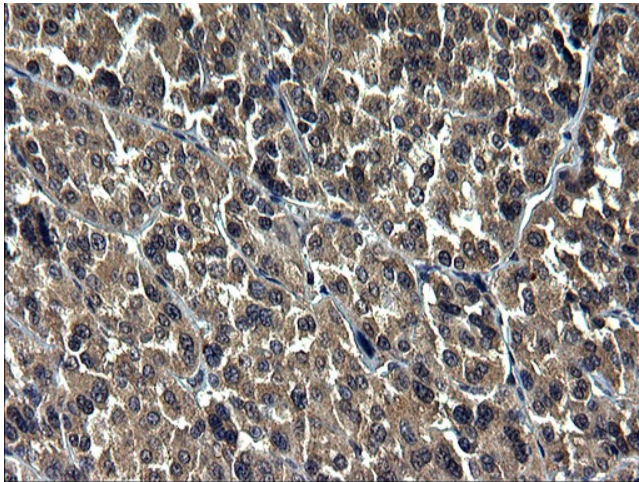
Lane 1: Marker [kDa] 250, 130, 95, 72, 55, 36, 28, 17, 11; Lane 2: RT-4; Lane 3: U-251 MG; Lane 4: Human Plasma; Lane 5: Liver; Lane 6: Tonsil. This validation was performed by Protein Atlas and the presentation of data is for informational purposes only.



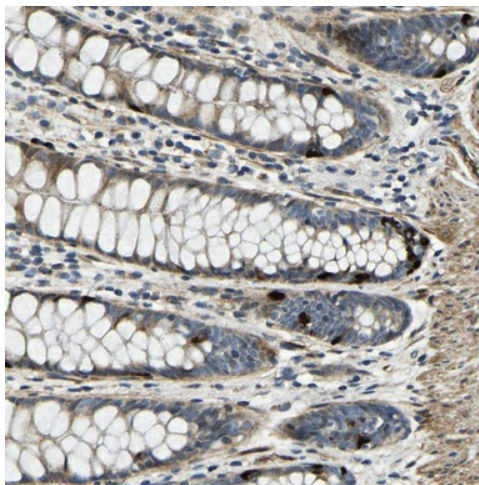
ELISA: RNF39 Antibody



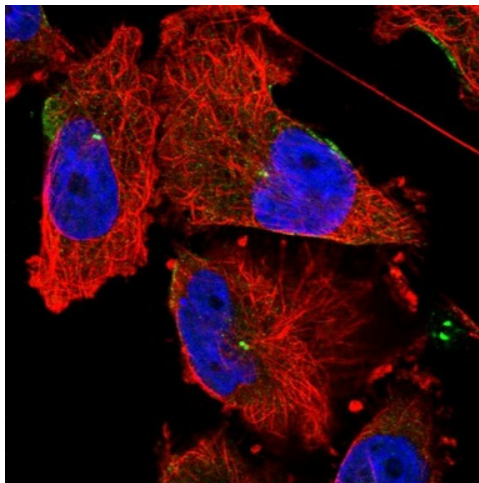
Immunohistochemical staining of paraffin-embedded Human Kidney tissue using anti-RNF39 rabbit polyclonal antibody. (TA590377)



Immunohistochemical staining of paraffin-embedded Carcinoma of Human kidney tissue using anti-RNF39 rabbit polyclonal antibody. (TA590377)



Immunohistochemical staining of human rectum shows strong cytoplasmic positivity in a subset of glandular cells. This validation was performed by Protein Atlas and the presentation of data is for informational purposes only.



Immunofluorescent staining of human cell line U-251 MG shows positivity in cytoplasm & centrosome. This validation was performed by Protein Atlas and the presentation of data is for informational purposes only.