

## Product datasheet for **TA590374**

### OTX2 Rabbit Polyclonal Antibody

#### Product data:

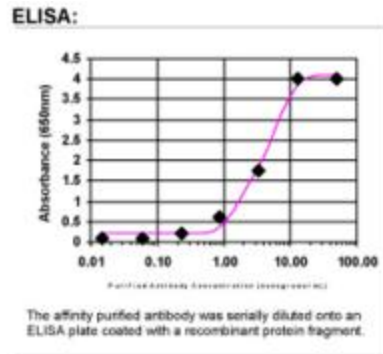
Product Type:	Primary Antibodies
Applications:	ELISA
Recommended Dilution:	ELISA: 1:100-1:2000
Reactivity:	Human
Host:	Rabbit
Isotype:	IgG
Clonality:	Polyclonal
Immunogen:	DNA immunization. This antibody is specific for the Middle Region of the target protein.
Formulation:	20 mM Potassium Phosphate, 150 mM Sodium Chloride, pH 7.0
Concentration:	0.82mg/ml
Purification:	Purified from mouse ascites fluids or tissue culture supernatant by affinity chromatography (protein A/G)
Conjugation:	Unconjugated
Storage:	Store at -20°C as received.
Stability:	Stable for 12 months from date of receipt.
Gene Name:	orthodenticle homeobox 2
Database Link:	<a href="#">NP_758840</a> <a href="#">Entrez Gene 5015 Human</a> <a href="#">P32243</a>
Background:	Homeobox protein Otx2 is a member of the bicoid sub-family of homeodomain-containing transcription factors. It is an early marker of endodermal differentiation of embryonic stem cells and may play a role in the development of the brain and the sense organs. Two distinct isoforms have been identified. Can bind to the BCD target sequence (BTS): 5'-TCTAATCCC-3'.
Synonyms:	CPHD6; MCOP55
Note:	This antibody was generated by SDIX's Genomic Antibody Technology® (GAT). <a href="#">Learn about GAT</a>



[View online »](#)

**Protein Families:** Embryonic stem cells, Induced pluripotent stem cells, Stem cell - Pluripotency, Transcription Factors

**Product images:**



ELISA: OTX2 Antibody