

Product datasheet for **TA590371**

IGSF22 Rabbit Polyclonal Antibody

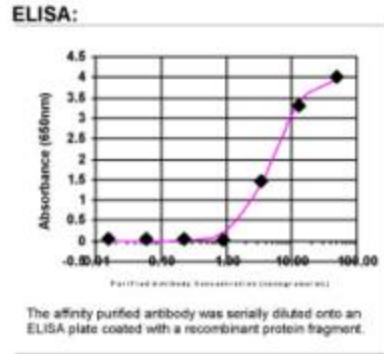
Product data:

Product Type:	Primary Antibodies
Applications:	ELISA, IHC
Recommended Dilution:	WB: 1:500; ELISA: 1:100-1:2000; IHC: 1:50
Reactivity:	Human
Host:	Rabbit
Isotype:	IgG
Clonality:	Polyclonal
Immunogen:	DNA immunization. This antibody is specific for the Middle Region of the target protein.
Formulation:	20 mM Potassium Phosphate, 150 mM Sodium Chloride, pH 7.0
Concentration:	0.9927 mg/ml
Purification:	Purified from mouse ascites fluids or tissue culture supernatant by affinity chromatography (protein A/G)
Conjugation:	Unconjugated
Storage:	Store at -20°C as received.
Stability:	Stable for 12 months from date of receipt.
Gene Name:	immunoglobulin superfamily member 22
Database Link:	NP_775859 Entrez Gene 283284 Human Q8N9C0
Background:	Fibronectin type 3 domain; One of three types of internal repeats found in the plasma protein fibronectin. Its tenth fibronectin type III repeat contains an RGD cell recognition sequence in a flexible loop between 2 strands.
Synonyms:	IGFN2
Note:	This antibody was generated by SDIX's Genomic Antibody Technology® (GAT). Learn about GAT

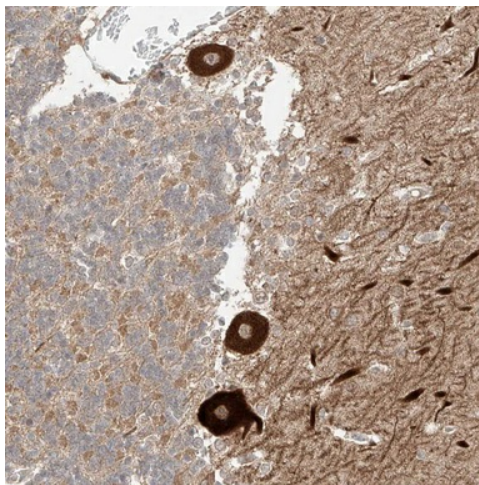


[View online »](#)

Product images:



ELISA: IGSF22 Antibody



Immunohistochemical staining of human cerebellum shows strong cytoplasmic positivity in Purkinje cells. This validation was performed by Protein Atlas and the presentation of data is for informational purposes only.