

## Product datasheet for **TA590370**

### FRMD3 Rabbit Polyclonal Antibody

#### Product data:

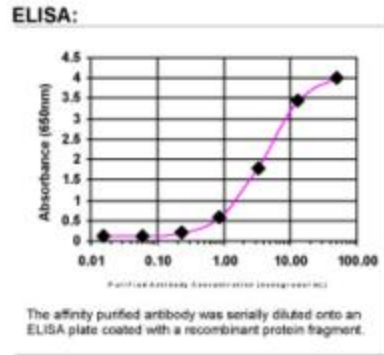
Product Type:	Primary Antibodies
Applications:	ELISA
Recommended Dilution:	WB: 1:5000-1:20000; ELISA: 1:100-1:2000
Reactivity:	Human
Host:	Rabbit
Isotype:	IgG
Clonality:	Polyclonal
Immunogen:	DNA immunization. This antibody is specific for the Middle Region of the target protein.
Formulation:	20 mM Potassium Phosphate, 150 mM Sodium Chloride, pH 7.0
Concentration:	1.09489 mg/ml
Purification:	Purified from mouse ascites fluids or tissue culture supernatant by affinity chromatography (protein A/G)
Conjugation:	Unconjugated
Storage:	Store at -20°C as received.
Stability:	Stable for 12 months from date of receipt.
Gene Name:	FERM domain containing 3
Database Link:	<a href="#">NP_777598</a> <a href="#">Entrez Gene 257019 Human</a> <a href="#">A2A2Y4</a>
Background:	Protein 4.1 of red blood cells, or 4.1R (EPB41; MIM 130500), is a multifunctional protein essential for maintaining erythrocyte shape and membrane mechanical properties. The protein 4.1 family comprises a group of structural proteins that includes, in addition to 4.1R, 4.1G (general type; MIM 603237), 4.1B (brain type; MIM 605331), 4.1N (neuron type; MIM 602879), and 4.1O (ovary type). [supplied by OMIM]
Synonyms:	4.1O; EPB41L40; EPB41LO; P410
Note:	This antibody was generated by SDIX's Genomic Antibody Technology® (GAT). <a href="#">Learn about GAT</a>



[View online »](#)

Protein Families: Transmembrane

Product images:



ELISA: FRMD3 Antibody