

## Product datasheet for **TA590366**

### Liprin alpha 1 (PPFIA1) Rabbit Polyclonal Antibody

#### Product data:

Product Type:	Primary Antibodies
Applications:	ELISA, IHC, WB
Recommended Dilution:	WB: 1:5000-1:20000; ELISA: 1:100-1:2000; IHC: 1:10-1:2000; IHC-P 1:10-1:2000
Reactivity:	Human
Host:	Rabbit
Isotype:	IgG
Clonality:	Polyclonal
Immunogen:	DNA immunization. This antibody is specific for the Middle Region of the target protein.
Formulation:	20 mM Potassium Phosphate, 150 mM Sodium Chloride, pH 7.0
Concentration:	1.01mg/ml
Purification:	Purified from mouse ascites fluids or tissue culture supernatant by affinity chromatography (protein A/G)
Conjugation:	Unconjugated
Storage:	Store at -20°C as received.
Stability:	Stable for 12 months from date of receipt.
Gene Name:	PTPRF interacting protein alpha 1
Database Link:	<a href="#">NP_803172</a> <a href="#">Entrez Gene 8500 Human</a> <a href="#">Q13136</a>



[View online »](#)

**Background:**

This protein is a member of the LAR protein-tyrosine phosphatase-interacting protein (liprin) family. Liprins interact with members of LAR family of transmembrane protein tyrosine phosphatases, which are known to be important for axon guidance and mammary gland development. This protein binds to the intracellular membrane-distal phosphatase domain of tyrosine phosphatase LAR, and appears to localize LAR to cell focal adhesions. This interaction may regulate the disassembly of focal adhesion and thus help orchestrate cell-matrix interactions. May regulate the disassembly of focal adhesions. May localize receptor-like tyrosine phosphatases type 2A at specific sites on the plasma membrane. possibly regulating their interaction with the extracellular environment and their association with substrates.

**Synonyms:**

LIP.1; LIP1; LIPRIN

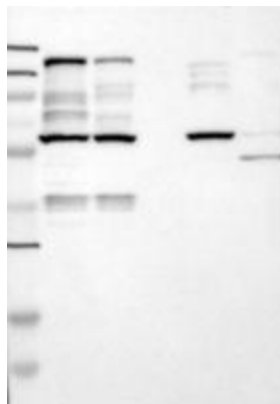
**Note:**

This antibody was generated by SDIX's Genomic Antibody Technology® (GAT). [Learn about GAT](#)

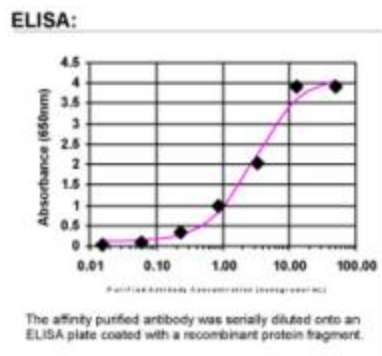
**Protein Families:**

Druggable Genome, Phosphatase

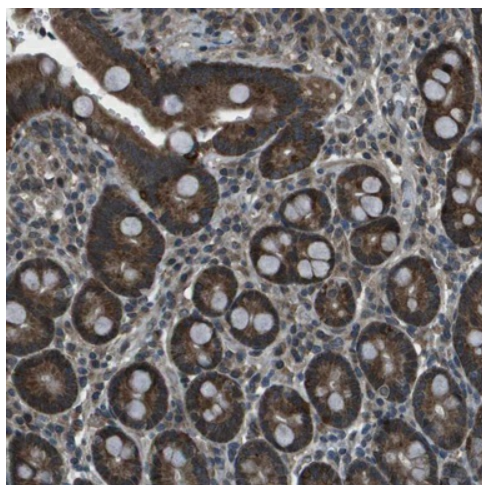
**Product images:**



Western Blot: Liprin alpha 1 Antibody - Samples: Lane 1, Marker: 250, 130, 95, 72, 55, 36, 28, 17, 11 Lane 2, RT-4 Lane 3, U-251MG sp Lane 4, Human Plasma Lane 5, Liver Lane 6, Tonsil, Target weight: 136, 134 (splice variants) Validation score: 2 Validation description: Supportive - Band of predicted size in kDa (+/-20%) with additional bands present.



ELISA: Liprin alpha 1 Antibody



Immunohistochemical staining of human duodenum shows strong cytoplasmic positivity in glandular cells. Antibody dilution: 1:1000. Image and statement courtesy of the Human Protein Atlas (HPA).