

Product datasheet for **TA590357**

RFC4 Rabbit Polyclonal Antibody

Product data:

Product Type:	Primary Antibodies
Applications:	ELISA, IHC, WB
Recommended Dilution:	WB 1:20000, IHC 1:150, ELISA 1:100-1:2000
Reactivity:	Human
Host:	Rabbit
Isotype:	IgG
Clonality:	Polyclonal
Immunogen:	DNA immunization. This antibody is specific for the C Terminus Region of the target protein.
Formulation:	20 mM Potassium Phosphate, 150 mM Sodium Chloride, pH 7.0
Concentration:	1.01022 mg/ml
Purification:	Purified from mouse ascites fluids or tissue culture supernatant by affinity chromatography (protein A/G)
Conjugation:	Unconjugated
Storage:	Store at -20°C as received.
Stability:	Stable for 12 months from date of receipt.
Gene Name:	replication factor C subunit 4
Database Link:	NP_853551 Entrez Gene 5984 Human P35249
Background:	The elongation of primed DNA templates by DNA polymerase delta and DNA polymerase epsilon requires the accessory proteins proliferating cell nuclear antigen (PCNA) and replication factor C (RFC). RFC, also named activator 1, is a protein complex consisting of five distinct subunits of 140, 40, 38, 37, and 36 kD. This gene encodes the 37 kD subunit. This subunit forms a core complex with the 36 and 40 kDa subunits. The core complex possesses DNA-dependent ATPase activity, which was found to be stimulated by PCNA in an in vitro system. Alternatively spliced transcript variants encoding the same protein have been reported.
Synonyms:	A1; RFC37



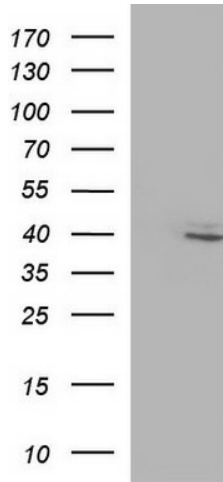
[View online »](#)

Note: This antibody was generated by SDIX's Genomic Antibody Technology® (GAT). [Learn about GAT](#)

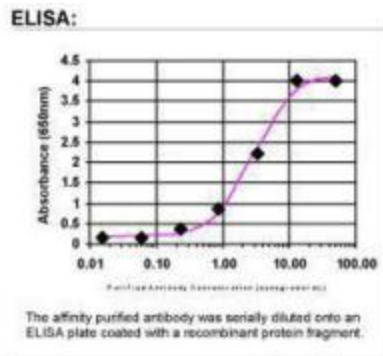
Protein Families: Druggable Genome, Stem cell - Pluripotency

Protein Pathways: DNA replication, Mismatch repair, Nucleotide excision repair

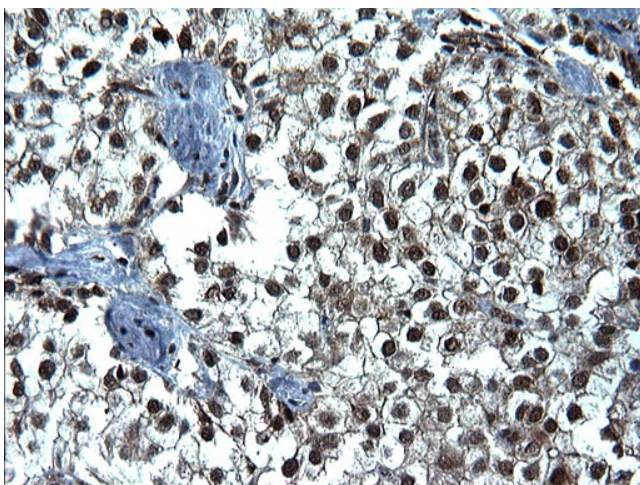
Product images:



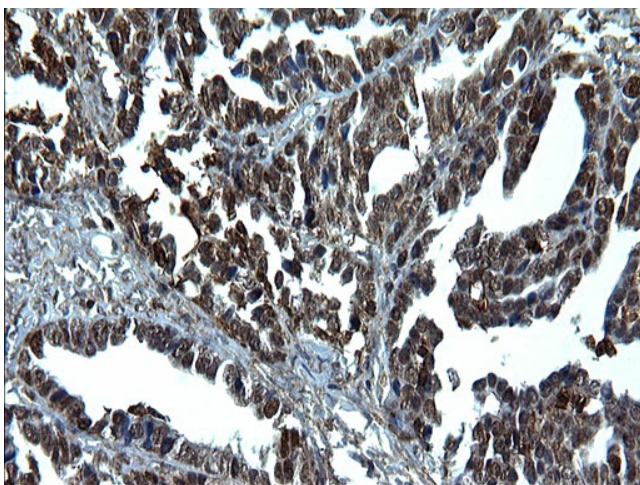
HEK293T cells were transfected with the pCMV6-ENTRY control (Cat# [PS100001], Left lane) or pCMV6-ENTRY RFC4 (Cat# [RC211392], Right lane) cDNA for 48 hrs and lysed. Equivalent amounts of cell lysates (5 ug per lane) were separated by SDS-PAGE and immunoblotted with anti-RFC4(Cat# TA590357). Positive lysates [LY405706] (100ug) and [LC405706] (20ug) can be purchased separately from OriGene.



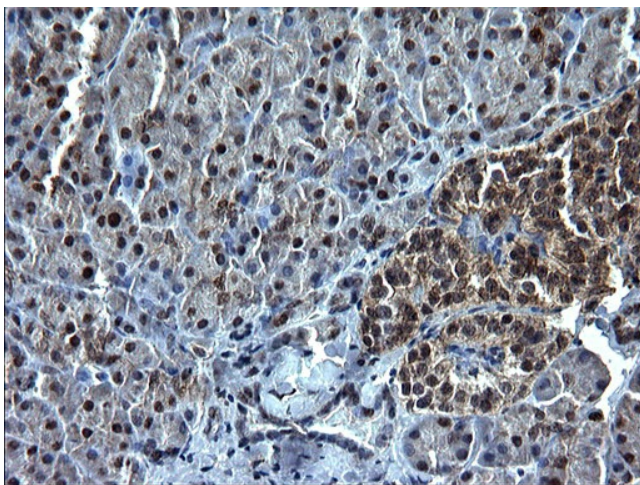
ELISA: RFC4 Antibody



Immunohistochemical staining of paraffin-embedded Carcinoma of Human liver tissue using anti-RFC4 rabbit polyclonal antibody. (TA590357)



Immunohistochemical staining of paraffin-embedded Adenocarcinoma of Human ovary tissue using anti-RFC4 rabbit polyclonal antibody. (TA590357)



Immunohistochemical staining of paraffin-embedded Human pancreas tissue using anti-RFC4 rabbit polyclonal antibody. (TA590357)