

## Product datasheet for **TA590353**

### PPP2R3A Rabbit Polyclonal Antibody

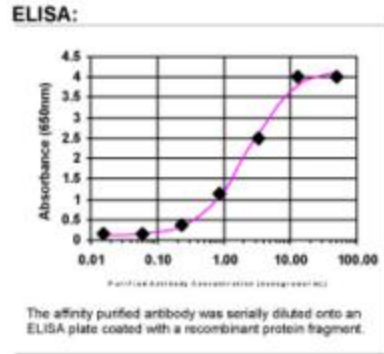
#### Product data:

Product Type:	Primary Antibodies
Applications:	ELISA
Recommended Dilution:	WB: 1:5000-1:20000; ELISA: 1:100-1:2000
Reactivity:	Human
Host:	Rabbit
Isotype:	IgG
Clonality:	Polyclonal
Immunogen:	DNA immunization. This antibody is specific for the N Terminus Region of the target protein.
Formulation:	20 mM Potassium Phosphate [pH 7.0] with 150 mM Sodium Chloride
Concentration:	1.01022 mg/ml
Purification:	Purified from mouse ascites fluids or tissue culture supernatant by affinity chromatography (protein A/G)
Conjugation:	Unconjugated
Storage:	Store at -20°C as received.
Stability:	Stable for 12 months from date of receipt.
Gene Name:	protein phosphatase 2 regulatory subunit B"alpha
Database Link:	<a href="#">NP_871626</a> <a href="#">Entrez Gene 5523 Human</a> <a href="#">Q06190</a>
Synonyms:	PPP2R3; PR72; PR130
Note:	This antibody was generated by SDIX's Genomic Antibody Technology® (GAT). <a href="#">Learn about GAT</a>
Protein Families:	Druggable Genome, Phosphatase



[View online »](#)

## Product images:



ELISA: Ppp2r3a Antibody