

Product datasheet for **TA590352**

SPDYA Rabbit Polyclonal Antibody

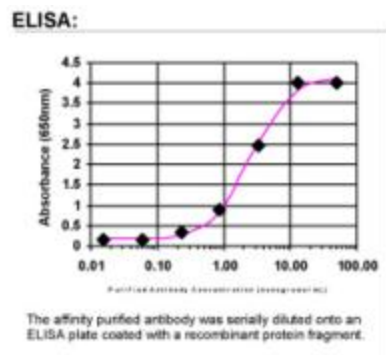
Product data:

| | |
|-----------------------|---|
| Product Type: | Primary Antibodies |
| Applications: | ELISA |
| Recommended Dilution: | WB: 1:5000-1:20000; ELISA: 1:100-1:2000 |
| Reactivity: | Human |
| Host: | Rabbit |
| Isotype: | IgG |
| Clonality: | Polyclonal |
| Immunogen: | DNA immunization. This antibody is specific for the N Terminus Region of the target protein. |
| Formulation: | 20 mM Potassium Phosphate, 150 mM Sodium Chloride, pH 7.0 |
| Concentration: | 0.97mg/ml |
| Purification: | Purified from mouse ascites fluids or tissue culture supernatant by affinity chromatography (protein A/G) |
| Conjugation: | Unconjugated |
| Storage: | Store at -20°C as received. |
| Stability: | Stable for 12 months from date of receipt. |
| Gene Name: | speedy/RINGO cell cycle regulator family member A |
| Database Link: | NP_877433 Entrez Gene 245711 Human Q5MJ70 |
| Background: | Speedy/Ringo (Spy1) regulates the G1/S phase transition of the cell cycle by binding and activating CDC2, CDK2 and CDKN1B/KIP1. It mediates cell survival during the DNA damage process through activation of CDK2. |
| Synonyms: | RINGO3; RINGOA; SPDY1; SPY1 |
| Note: | This antibody was generated by SDIX's Genomic Antibody Technology® (GAT). Learn about GAT |
| Protein Pathways: | Oocyte meiosis, Progesterone-mediated oocyte maturation |



[View online »](#)

Product images:



ELISA: Speedy / Ringo Antibody