

Product datasheet for **TA590345**

Nucleophosmin (NPM1) Rabbit Polyclonal Antibody

Product data:

Product Type:	Primary Antibodies
Applications:	ELISA
Recommended Dilution:	WB: 1:5000-1:20000; ELISA: 1:100-1:2000; IHC: 1:10-1:2000; IHC-P 1:250-1:2000
Reactivity:	Human
Host:	Rabbit
Isotype:	IgG
Clonality:	Polyclonal
Immunogen:	DNA immunization. This antibody is specific for the C Terminus Region of the target protein.
Formulation:	20 mM Potassium Phosphate, 150 mM Sodium Chloride, pH 7.0
Concentration:	0.96mg/ml
Purification:	Purified from mouse ascites fluids or tissue culture supernatant by affinity chromatography (protein A/G)
Conjugation:	Unconjugated
Storage:	Store at -20°C as received.
Stability:	Stable for 12 months from date of receipt.
Gene Name:	nucleophosmin 1
Database Link:	NP_954654 Entrez Gene 4869 Human P06748
Background:	The CD246 antigen, or ALK (Anaplastic Lymphoma Kinase; neural tyrosine kinase) is a 200 kDa transmembrane molecule expressed only in neural tissues (weakly) and by the rhabdomyosarcoma Rh30 cell line. The alk gene is on chromosome 2. Upon translocation between chromosome 2 and chromosome 5 [t(2;5)], the alk gene fuses with the npm gene. NPM, also known as nucleophosmin or B23, is an ubiquitous nucleolar phosphoprotein involved in the transport of pre-ribosomal components between the nucleolus and the cytoplasm. The chimeric product resulting from t(2;5) translocation is a protein of 80 kDa with the N-terminal portion of NPM linked to the complete intracellular portion of ALK. Karpas 299 and SU-DHL-1 lymphoid cell lines strongly express NPM-ALK.



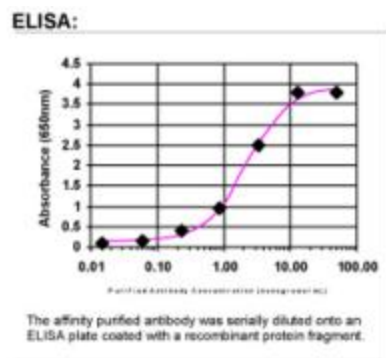
[View online »](#)

Synonyms: B23; NPM

Note: This antibody was generated by SDIX's Genomic Antibody Technology® (GAT). [Learn about GAT](#)

Protein Families: Druggable Genome, Stem cell - Pluripotency, Transcription Factors

Product images:



ELISA: Nucleophosmin Antibody - Affinity Purified