

## Product datasheet for **TA590333**

### CDC25A Rabbit Polyclonal Antibody

#### Product data:

Product Type:	Primary Antibodies
Applications:	ELISA, IHC, WB
Recommended Dilution:	WB 1:20000, IHC 1:150, ELISA 1:100-1:2000
Reactivity:	Human
Host:	Rabbit
Isotype:	IgG
Clonality:	Polyclonal
Immunogen:	DNA immunization. This antibody is specific for the Middle Region of the target protein.
Formulation:	20 mM Potassium Phosphate, 150 mM Sodium Chloride, pH 7.0
Concentration:	0.72mg/ml
Purification:	Purified from mouse ascites fluids or tissue culture supernatant by affinity chromatography (protein A/G)
Conjugation:	Unconjugated
Storage:	Store at -20°C as received.
Stability:	Stable for 12 months from date of receipt.
Gene Name:	cell division cycle 25A
Database Link:	<a href="#">NP_963861</a> <a href="#">Entrez Gene 993 Human P30304</a>
Background:	Cyclin dependent kinases are positively regulated by association with cyclins and negatively regulated by binding to inhibitory subunits. The activity of cyclin dependent kinases is also regulated by the phosphorylation status, which is controlled by the antagonistic action of Wee1 kinase and CDC25 phosphatases. Three CDC25 genes are present in human cells: CDC25A, CDC25B, and CDC25C. These three genes function at different phases of the cell cycle. Whereas CDC25A and CDC25B are expressed throughout the cell cycle, with peak expression in G1 for CDC25A and in both G1 S phase and G2 for CDC25B, CDC25C is predominantly expressed in G2.
Synonyms:	CDC25A2



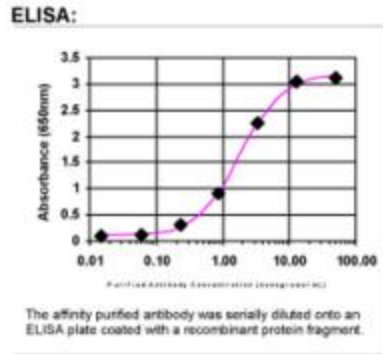
[View online »](#)

**Note:** This antibody was generated by SDIX's Genomic Antibody Technology® (GAT). [Learn about GAT](#)

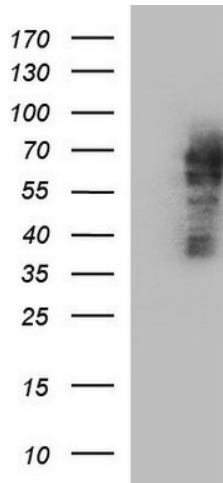
**Protein Families:** Druggable Genome, Phosphatase

**Protein Pathways:** Cell cycle, Progesterone-mediated oocyte maturation

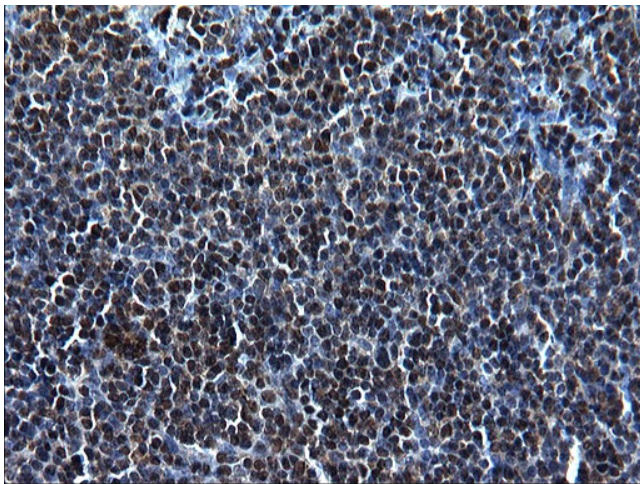
**Product images:**



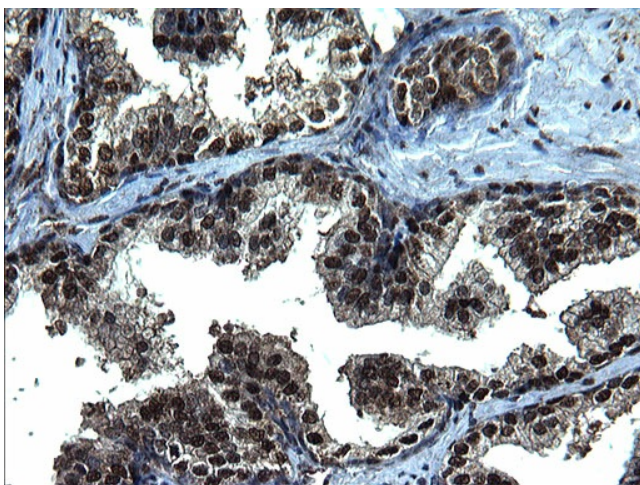
ELISA: Cdc25A Antibody



HEK293T cells were transfected with the pCMV6-ENTRY control (Cat# [PS100001], Left lane) or pCMV6-ENTRY CDC25A (Cat# [RC214325], Right lane) cDNA for 48 hrs and lysed. Equivalent amounts of cell lysates (5 ug per lane) were separated by SDS-PAGE and immunoblotted with anti-CDC25A(Cat# TA590333).



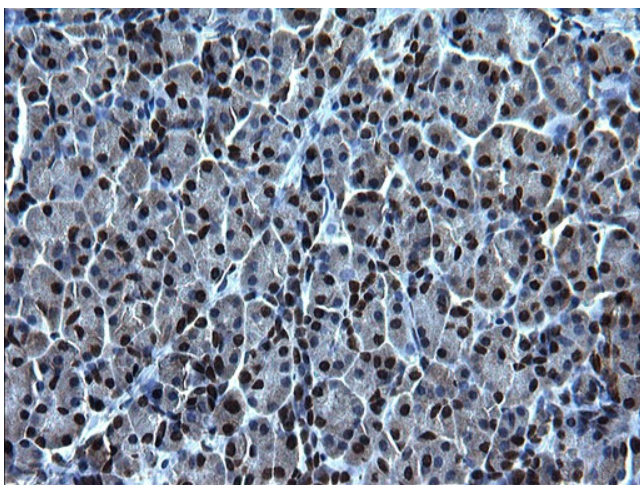
Immunohistochemical staining of paraffin-embedded Human lymph node tissue using anti-CDC25A Rabbit Polyclonal antibody. (TA590333). Heat-induced epitope retrieval by EDTA solution buffer pH 8.0 at 120°C for 3 min.



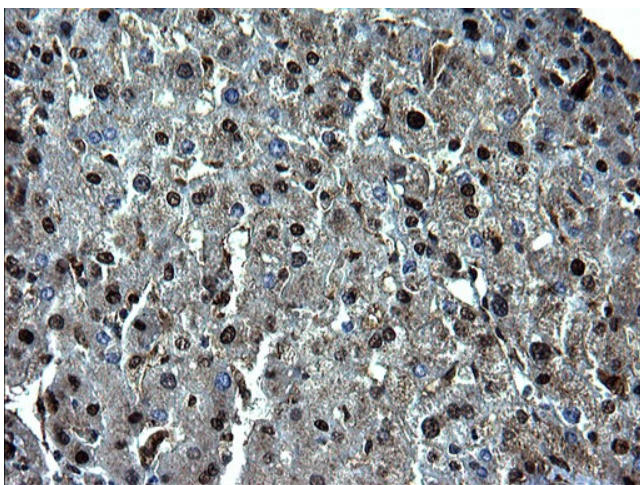
Immunohistochemical staining of paraffin-embedded Human prostate tissue using anti-CDC25A Rabbit Polyclonal antibody. (TA590333). Heat-induced epitope retrieval by EDTA solution buffer pH 8.0 at 120°C for 3 min.



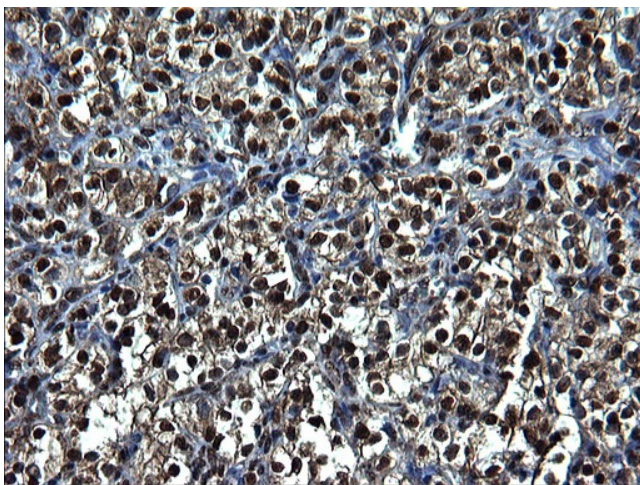
Immunohistochemical staining of paraffin-embedded Human endometrium tissue using anti-CDC25A Rabbit Polyclonal antibody. (TA590333). Heat-induced epitope retrieval by EDTA solution buffer pH 8.0 at 120°C for 3 min.



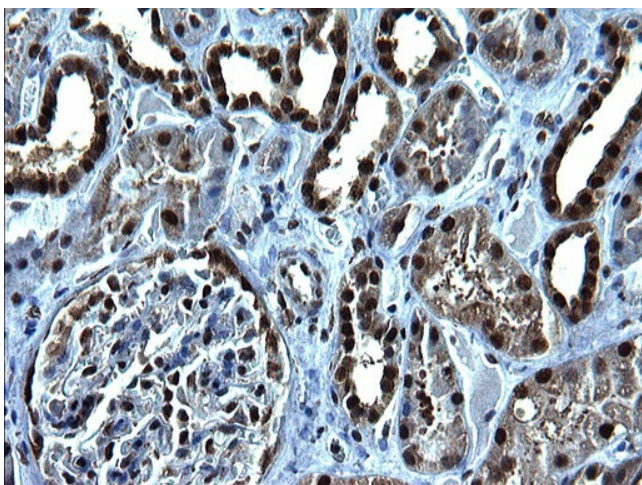
Immunohistochemical staining of paraffin-embedded Human pancreas tissue using anti-CDC25A Rabbit Polyclonal antibody. (TA590333). Heat-induced epitope retrieval by EDTA solution buffer pH 8.0 at 120°C for 3 min.



Immunohistochemical staining of paraffin-embedded Human liver tissue using anti-CDC25A Rabbit Polyclonal antibody. (TA590333). Heat-induced epitope retrieval by EDTA solution buffer pH 8.0 at 120°C for 3 min.



Immunohistochemical staining of paraffin-embedded Carcinoma of Human kidney tissue using anti-CDC25A Rabbit Polyclonal antibody. (TA590333). Heat-induced epitope retrieval by EDTA solution buffer pH 8.0 at 120°C for 3 min.



Immunohistochemical staining of paraffin-embedded Human Kidney tissue using anti-CDC25A Rabbit Polyclonal antibody. (TA590333). Heat-induced epitope retrieval by EDTA solution buffer pH 8.0 at 120°C for 3 min.