

Product datasheet for **TA590330**

RP9 Rabbit Polyclonal Antibody

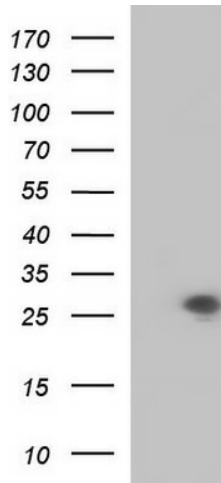
Product data:

Product Type:	Primary Antibodies
Applications:	ELISA, IHC, WB
Recommended Dilution:	WB 1:20000, IHC 1:150, ELISA 1:100-1:2000
Reactivity:	Human
Host:	Rabbit
Isotype:	IgG
Clonality:	Polyclonal
Immunogen:	DNA immunization. This antibody is specific for the N Terminus Region of the target protein.
Formulation:	20 mM Potassium Phosphate, 150 mM Sodium Chloride, pH 7.0
Concentration:	0.86569 mg/ml
Purification:	Purified from mouse ascites fluids or tissue culture supernatant by affinity chromatography (protein A/G)
Conjugation:	Unconjugated
Storage:	Store at -20°C as received.
Stability:	Stable for 12 months from date of receipt.
Gene Name:	RP9 pre-mRNA splicing factor
Database Link:	NP_976033 Entrez Gene 6100 Human Q8TA86
Background:	RP9 is thought to be a target protein for the PIM1 kinase. May play some roles in B-cell proliferation in association with PIM1 (By similarity).
Synonyms:	PAP-1; PAP1
Note:	This antibody was generated by SDIX's Genomic Antibody Technology® (GAT). Learn about GAT

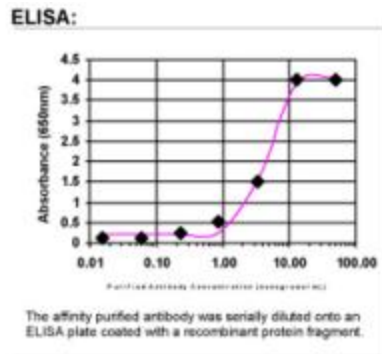


[View online »](#)

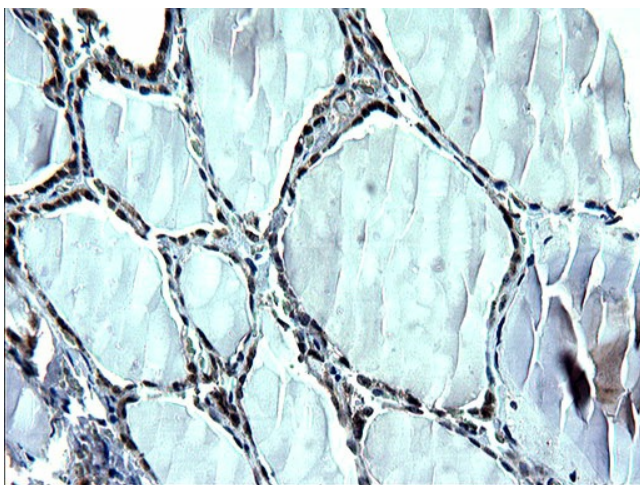
Product images:



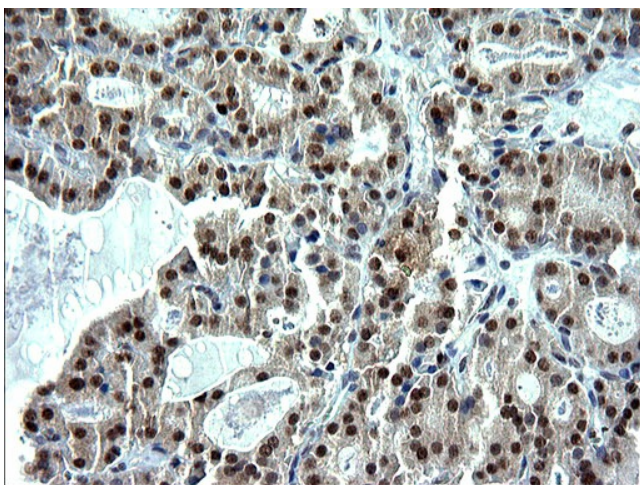
HEK293T cells were transfected with the pCMV6-ENTRY control (Cat# [PS100001], Left lane) or pCMV6-ENTRY RP9 (Cat# [RC204944], Right lane) cDNA for 48 hrs and lysed. Equivalent amounts of cell lysates (5 ug per lane) were separated by SDS-PAGE and immunoblotted with anti-RP9(Cat# TA590330). Positive lysates [LY404372] (100ug) and [LC404372] (20ug) can be purchased separately from OriGene.



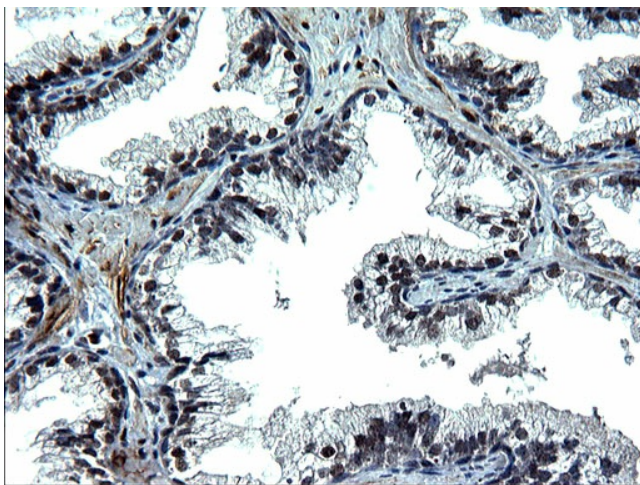
ELISA: RP9 Antibody



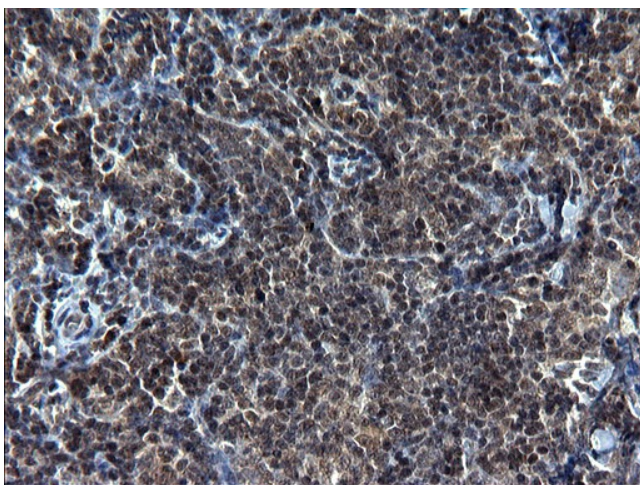
Immunohistochemical staining of paraffin-embedded Human thyroid tissue using anti-RP9 rabbit polyclonal antibody. (TA590330)



Immunohistochemical staining of paraffin-embedded Carcinoma of Human thyroid tissue using anti-RP9 rabbit polyclonal antibody. (TA590330)



Immunohistochemical staining of paraffin-embedded Human prostate tissue using anti-RP9 rabbit polyclonal antibody. (TA590330)



Immunohistochemical staining of paraffin-embedded Human lymphoma tissue using anti-RP9 rabbit polyclonal antibody. (TA590330)