

Product datasheet for **TA590328**

NLRP7 Rabbit Polyclonal Antibody

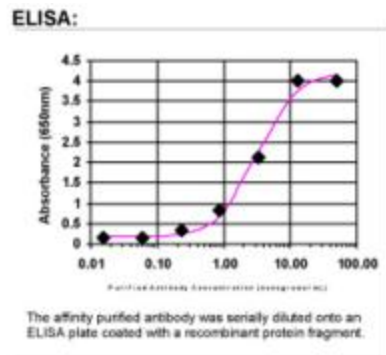
Product data:

Product Type:	Primary Antibodies
Applications:	ELISA
Recommended Dilution:	WB: 1:5000-1:20000; ELISA: 1:100-1:2000
Reactivity:	Human
Host:	Rabbit
Isotype:	IgG
Clonality:	Polyclonal
Immunogen:	DNA immunization. This antibody is specific for the N Terminus Region of the target protein.
Formulation:	20 mM Potassium Phosphate, 150 mM Sodium Chloride, pH 7.0
Concentration:	0.91095 mg/ml
Purification:	Purified from mouse ascites fluids or tissue culture supernatant by affinity chromatography (protein A/G)
Conjugation:	Unconjugated
Storage:	Store at -20°C as received.
Stability:	Stable for 12 months from date of receipt.
Gene Name:	NLR family pyrin domain containing 7
Database Link:	NP_996611 Entrez Gene 199713 Human Q8WX94
Background:	Leucine-rich repeats (LRRs), ribonuclease inhibitor (RI)-like subfamily. LRRs are 20-29 residue sequence motifs present in many proteins that participate in protein-protein interactions and have different functions and cellular locations.
Synonyms:	CLR19.4; HYDM; NALP7; NOD12; PAN7; PYPAF3
Note:	This antibody was generated by SDIX's Genomic Antibody Technology® (GAT). Learn about GAT



[View online »](#)

Product images:



ELISA: NLRP7 Antibody