

Product datasheet for **TA590323**

Fibronectin (FN1) Rabbit Polyclonal Antibody

Product data:

Product Type:	Primary Antibodies
Applications:	ELISA
Recommended Dilution:	ELISA: 1:100-1:2000
Reactivity:	Human
Host:	Rabbit
Isotype:	IgG
Clonality:	Polyclonal
Immunogen:	DNA immunization. This antibody is specific for the N Terminus Region of the target protein.
Formulation:	20 mM Potassium Phosphate, 150 mM Sodium Chloride, pH 7.0
Concentration:	1.06423 mg/ml
Purification:	Purified from mouse ascites fluids or tissue culture supernatant by affinity chromatography (protein A/G)
Conjugation:	Unconjugated
Storage:	Store at -20°C as received.
Stability:	Stable for 12 months from date of receipt.
Gene Name:	fibronectin 1
Database Link:	NP_997639 Entrez Gene 2335 Human P02751
Background:	Fibronectin is an adhesive glycoprotein with a molecular mass of 440 kDa. It is believed to be important for the formation of a provisional matrix that promotes cell adhesion and migration during wound healing. Its age-dependent increase in plasma and tissues may be accompanied in pathological states, especially in tumor growth, by its proteolytic breakdown by a number of neutral proteases. It has also shown that several of its proteolytic breakdown products exhibit unexpected and mostly harmful biological activities.
Synonyms:	CIG; ED-B; FINC; FN; FNZ; GFND; GFND2; LETS; MSF
Note:	This antibody was generated by SDIX's Genomic Antibody Technology® (GAT). Learn about GAT

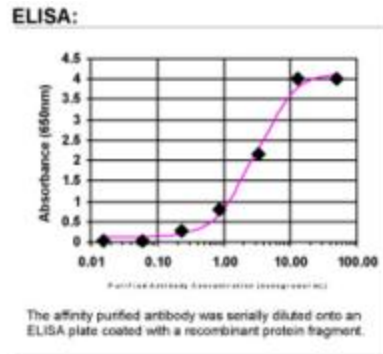


[View online »](#)

Protein Families: Druggable Genome, ES Cell Differentiation/IPS, Secreted Protein

Protein Pathways: ECM-receptor interaction, Focal adhesion, Pathways in cancer, Regulation of actin cytoskeleton, Small cell lung cancer

Product images:



ELISA: Fibronectin Antibody