

Product datasheet for **TA590317**

CD147 (BSG) Rabbit Polyclonal Antibody

Product data:

Product Type:	Primary Antibodies
Applications:	ELISA, IHC, WB
Recommended Dilution:	WB 1:5000~20000, IHC 1:150, ELISA 1:100-1:2000
Reactivity:	Human, Rat, Monkey
Host:	Rabbit
Isotype:	IgG
Clonality:	Polyclonal
Immunogen:	DNA immunization. This antibody is specific for the C Terminus Region of the target protein.
Formulation:	20 mM Potassium Phosphate, 150 mM Sodium Chloride, pH 7.0
Concentration:	1 mg/ml
Purification:	Purified from mouse ascites fluids or tissue culture supernatant by affinity chromatography (protein A/G)
Conjugation:	Unconjugated
Storage:	Store at -20°C as received.
Stability:	Stable for 12 months from date of receipt.
Gene Name:	basigin (Ok blood group)
Database Link:	NP_940993 Entrez Gene 25246 Rat Entrez Gene 721068 Monkey Entrez Gene 682 Human P35613

Background: CD147 plays a pivotal role in spermatogenesis, embryo implantation, neural network formation and tumor progression. It stimulates adjacent fibroblasts to produce matrix metalloproteinases (MMPs). CD147 may target monocarboxylate transporters SLC16A1, SLC16A3 and SLC16A8 to plasma membranes of retinal pigment epithelium and neural retina. CD147 also seems to be a receptor for oligomannosidic glycans. In vitro, it promotes outgrowth of astrocytic processes. CD147 forms homooligomers in a cis-dependent manner on the plasma membrane. It forms a complex with MMP1 at the tumor cell surface. CD147 interacts with SLC16A1 and SLC1A3; probably a BSG dimer is associated with a monocarboxylate transporter dimer. CD147 also interacts with ATP1B2, MAG and L1CAM.



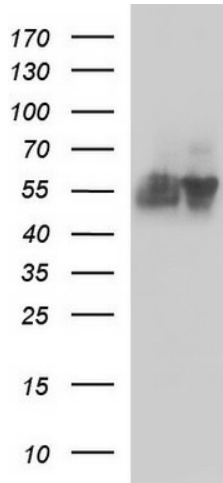
[View online »](#)

Synonyms: 5F7; CD147; EMMPRIN; OK; TCSF

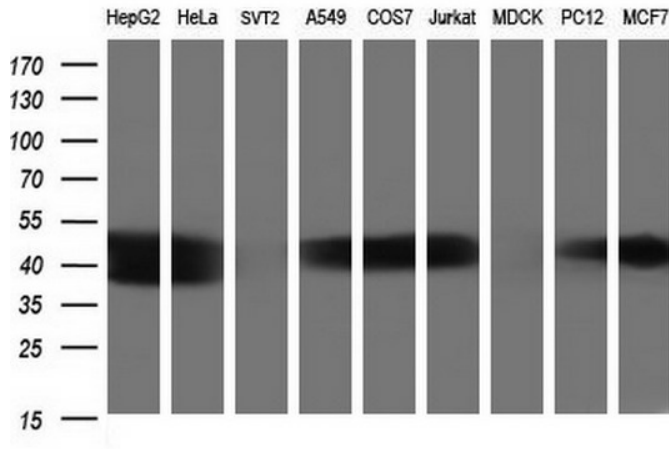
Note: This antibody was generated by SDIX's Genomic Antibody Technology® (GAT). [Learn about GAT](#)

Protein Families: Druggable Genome, ES Cell Differentiation/IPS, Transmembrane

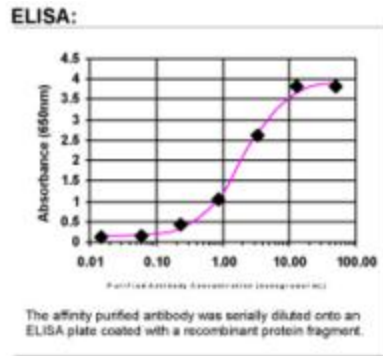
Product images:



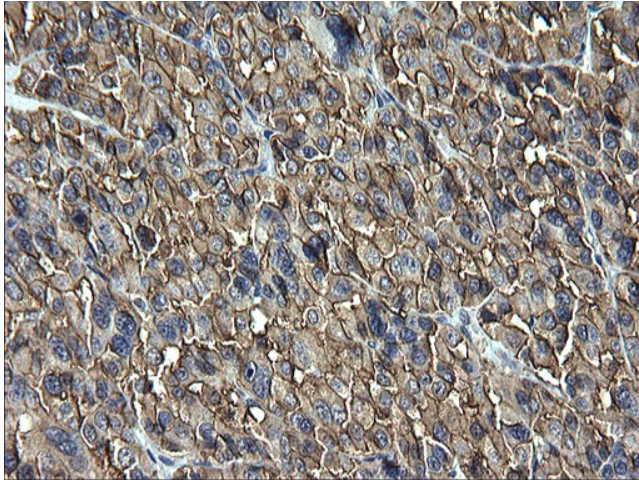
HEK293T cells were transfected with the pCMV6-ENTRY control (Cat# [PS100001], Left lane) or pCMV6-ENTRY BSG (Cat# [RC219418], Right lane) cDNA for 48 hrs and lysed. Equivalent amounts of cell lysates (5 ug per lane) were separated by SDS-PAGE and immunoblotted with anti-BSG (Cat# TA590317). Positive lysates [LY403688] (100ug) and [LC403688] (20ug) can be purchased separately from OriGene.



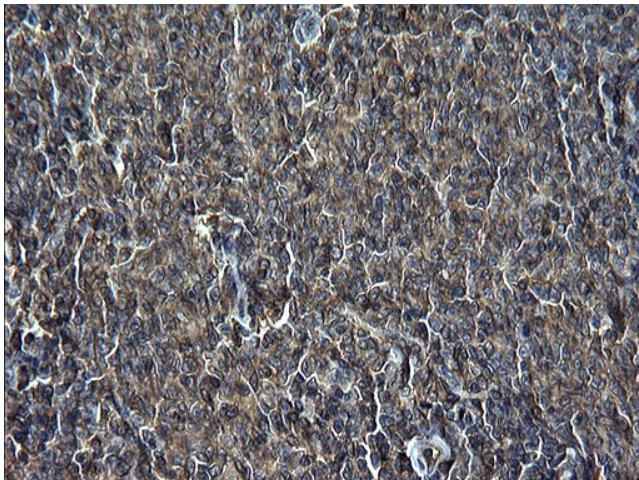
Western blot analysis of extracts (35ug) from 9 different cell lines by using anti-BSG polyclonal antibody (HepG2: human; HeLa: human; SVT2: mouse; A549: human; COS7: monkey; Jurkat: human; MDCK: canine; PC12: rat; MCF7: human).



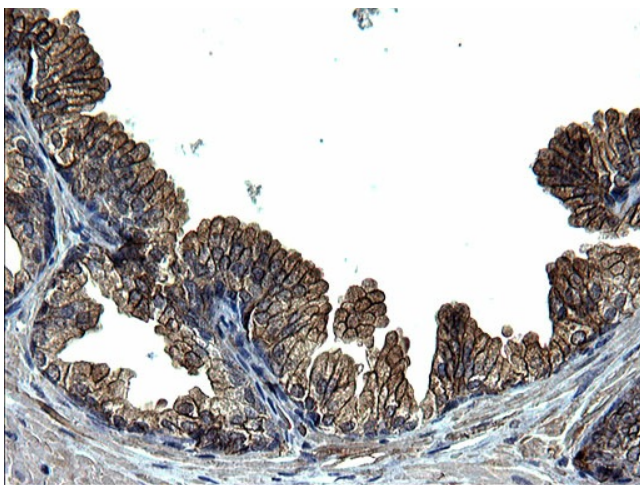
ELISA: CD147 Antibody - Affinity Purified



Immunohistochemical staining of paraffin-embedded Carcinoma of Human kidney tissue using anti-BSG rabbit polyclonal antibody. (TA590317)



Immunohistochemical staining of paraffin-embedded Adenocarcinoma of Human endometrium tissue using anti-BSG rabbit polyclonal antibody. (TA590317)



Immunohistochemical staining of paraffin-embedded Human prostate tissue using anti-BSG rabbit polyclonal antibody. (TA590317)