

## Product datasheet for **TA590316**

### ING1 Rabbit Polyclonal Antibody

#### Product data:

Product Type:	Primary Antibodies
Applications:	ELISA, IF, IHC, WB
Recommended Dilution:	WB 1:5000~20000,ELISA 1:100-1:2000
Reactivity:	Human, Rat, Monkey, Mouse
Host:	Rabbit
Isotype:	IgG
Clonality:	Polyclonal
Immunogen:	DNA immunization. This antibody is specific for the Middle Region of the target protein.
Formulation:	20 mM Potassium Phosphate, 150 mM Sodium Chloride, pH 7.0
Concentration:	0.98mg/ml
Purification:	Purified from mouse ascites fluids or tissue culture supernatant by affinity chromatography (protein A/G)
Conjugation:	Unconjugated
Storage:	Store at -20°C as received.
Stability:	Stable for 12 months from date of receipt.
Gene Name:	inhibitor of growth family member 1
Database Link:	<a href="#">NP_937861</a> <a href="#">Entrez Gene 26356 Mouse</a> <a href="#">Entrez Gene 306626 Rat</a> <a href="#">Entrez Gene 694955 Monkey</a> <a href="#">Entrez Gene 3621 Human</a> <a href="#">Q9UK53</a>
Background:	p33 ING1 is a tumor suppressor protein that can induce cell growth arrest and apoptosis. The encoded protein is a nuclear protein that physically interacts with the tumor suppressor protein TP53 and is a component of the p53-signaling pathway. Reduced expression and rearrangement of this gene have been detected in various cancers. Multiple alternatively spliced transcript variants encoding distinct isoforms have been reported. The accession number listed below is for variant (4) that encodes the longest isoform (D). Other synonyms for p33 ING1 include p33, p47, p33ING1, p24ING1c, p33ING1b, p47ING1a, growth inhibitor ING1, inhibitor of growth 1, tumor suppressor ING1 and growth inhibitory protein ING1.



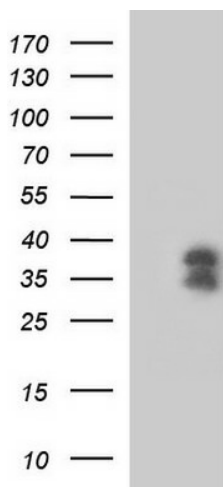
[View online »](#)

**Synonyms:** p24ING1c; p33; p33ING1; p33ING1b; p47; p47ING1a

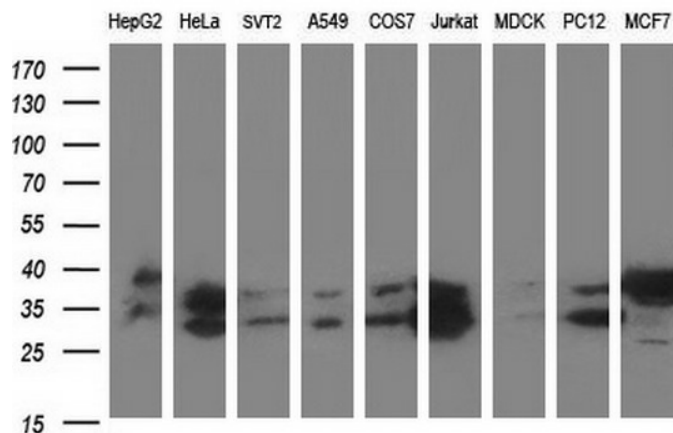
**Note:** This antibody was generated by SDIX's Genomic Antibody Technology® (GAT). [Learn about GAT](#)

**Protein Families:** Druggable Genome, Transcription Factors

**Product images:**



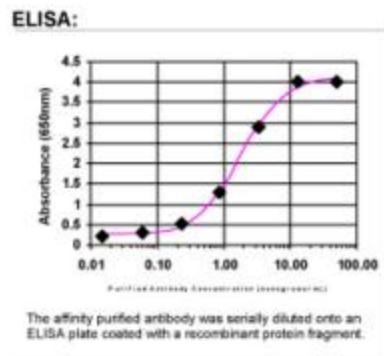
HEK293T cells were transfected with the pCMV6-ENTRY control (Cat# [PS100001], Left lane) or pCMV6-ENTRY ING1 (Cat# [RC210888], Right lane) cDNA for 48 hrs and lysed. Equivalent amounts of cell lysates (5 ug per lane) were separated by SDS-PAGE and immunoblotted with anti-ING1 (Cat# TA590316). Positive lysates [LY403677] (100ug) and [LC403677] (20ug) can be purchased separately from OriGene.



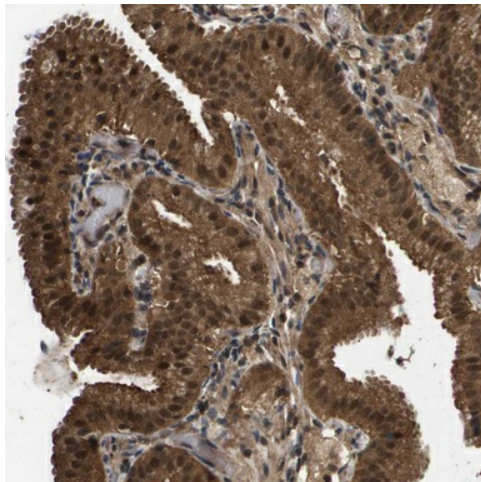
Western blot analysis of extracts (35ug) from 9 different cell lines by using anti-ING1 polyclonal antibody (HepG2: human; HeLa: human; SVT2: mouse; A549: human; COS7: monkey; Jurkat: human; MDCK: canine; PC12: rat; MCF7: human).



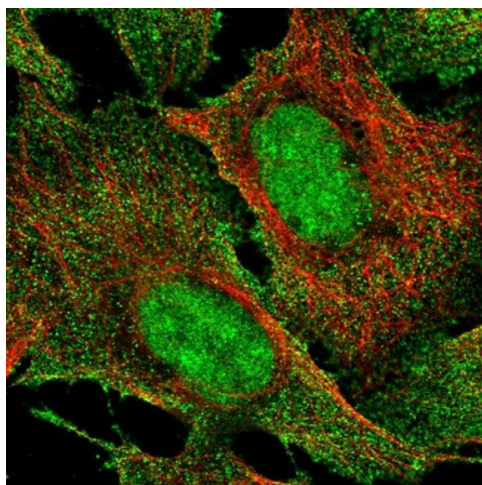
Lane 1: Marker [kDa] 250, 130, 95, 72, 55, 36, 28, 17, 11; Lane 2: RT-4; Lane 3: U-251 MG; Lane 4: Human Plasma; Lane 5: Liver; Lane 6: Tonsil. This validation was performed by Protein Atlas and the presentation of data is for informational purposes only.



ELISA: ING1 Antibody



Immunohistochemical staining of human gall bladder shows nuclear and cytoplasmic positivity in glandular cells. This validation was performed by Protein Atlas and the presentation of data is for informational purposes only.



Immunofluorescent staining of human cell line U-2 OS shows positivity in nucleus, nucleoli & plasma membrane. This validation was performed by Protein Atlas and the presentation of data is for informational purposes only.