

Product datasheet for **TA590313**

ABCB5 Rabbit Polyclonal Antibody

Product data:

Product Type:	Primary Antibodies
Applications:	ELISA
Recommended Dilution:	WB: 1:5000-1:20000; ELISA: 1:100-1:2000
Reactivity:	Human
Host:	Rabbit
Isotype:	IgG
Clonality:	Polyclonal
Immunogen:	DNA immunization. This antibody is specific for the N Terminus Region of the target protein.
Formulation:	20 mM Potassium Phosphate, 150 mM Sodium Chloride, pH 7.0
Concentration:	0.97mg/ml
Purification:	Purified from mouse ascites fluids or tissue culture supernatant by affinity chromatography (protein A/G)
Conjugation:	Unconjugated
Storage:	Store at -20°C as received.
Stability:	Stable for 12 months from date of receipt.
Gene Name:	ATP binding cassette subfamily B member 5
Database Link:	NP_848654 Entrez Gene 340273 Human Q2M3G0

Background: ATP-Binding Cassette proteins comprise a superfamily of transporters with a wide variety of substrates. ABCB5 is a novel member of the human P-glycoprotein family. It functions as a determinant of membrane potential and regulator of cell fusion in physiologic skin progenitor cells. Cell fusion is thought to contribute to tissue differentiation. ABCB5 is predominantly expressed in melanoma cells and is a novel molecular marker for a distinct subset of chemoresistant stem cell phenotype-expressing tumor cells among human epidermal melanocytes. It has been identified as a novel drug transporter in human malignant melanoma. ABCB5 is a rhodamine efflux transporter. This antibody product is intended to be used to confirm cellular localization and expression level of ABCB5.



[View online »](#)

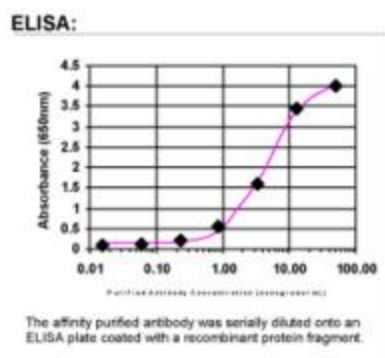
Synonyms: ABCB5alpha; ABCB5beta; EST422562

Note: This antibody was generated by SDIX's Genomic Antibody Technology® (GAT). [Learn about GAT](#)

Protein Families: Druggable Genome, Transmembrane

Protein Pathways: ABC transporters

Product images:



ELISA: ABCB5 Antibody