

## Product datasheet for **TA590312**

### PAK5 Rabbit Polyclonal Antibody

#### Product data:

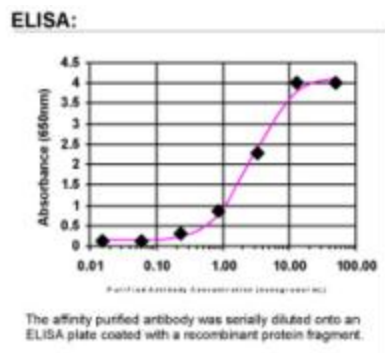
Product Type:	Primary Antibodies
Applications:	ELISA
Recommended Dilution:	WB: 1:5000-1:20000; ELISA: 1:100-1:2000
Reactivity:	Human
Host:	Rabbit
Isotype:	IgG
Clonality:	Polyclonal
Immunogen:	DNA immunization. This antibody is specific for the N Terminus Region of the target protein.
Formulation:	20 mM Potassium Phosphate, 150 mM Sodium Chloride, pH 7.0
Concentration:	0.91314 mg/ml
Purification:	Purified from mouse ascites fluids or tissue culture supernatant by affinity chromatography (protein A/G)
Conjugation:	Unconjugated
Storage:	Store at -20°C as received.
Stability:	Stable for 12 months from date of receipt.
Gene Name:	p21 (RAC1) activated kinase 5
Database Link:	<a href="#">NP_817127</a> <a href="#">Entrez Gene 57144 Human</a> <a href="#">Q9P286</a>
Background:	PAK5, a PAK (STE20) type protein kinase, contains a N-terminal Cdc42/Rac interactive binding (CRIB) motif and a C-terminal kinase domain. The protein is a target of the Rho GTPases Cdc42 and Rac; however, binding of Cdc42 is not required for kinase activity.
Synonyms:	PAK5
Note:	This antibody was generated by SDIX's Genomic Antibody Technology® (GAT). <a href="#">Learn about GAT</a>
Protein Families:	Druggable Genome, Protein Kinase



[View online »](#)

**Protein Pathways:** Axon guidance, ErbB signaling pathway, Focal adhesion, Regulation of actin cytoskeleton, Renal cell carcinoma, T cell receptor signaling pathway

**Product images:**



ELISA: PAK5 Antibody