

Product datasheet for **TA590307**

M-CSF (CSF1) Rabbit Polyclonal Antibody

Product data:

| | |
|-----------------------|---|
| Product Type: | Primary Antibodies |
| Applications: | ELISA, IHC, WB |
| Recommended Dilution: | WB 1:5000~20000, IHC 1:150, ELISA 1:100-1:2000 |
| Reactivity: | Human, Mouse |
| Host: | Rabbit |
| Isotype: | IgG |
| Clonality: | Polyclonal |
| Immunogen: | DNA immunization. This antibody is specific for the N Terminus Region of the target protein. |
| Formulation: | 20 mM Potassium Phosphate, 150 mM Sodium Chloride, pH 7.0 |
| Concentration: | 0.99124 mg/ml |
| Purification: | Purified from mouse ascites fluids or tissue culture supernatant by affinity chromatography (protein A/G) |
| Conjugation: | Unconjugated |
| Storage: | Store at -20°C as received. |
| Stability: | Stable for 12 months from date of receipt. |
| Gene Name: | colony stimulating factor 1 |
| Database Link: | NP_757349 Entrez Gene 12977 Mouse Entrez Gene 1435 Human P09603 |



[View online »](#)

Background:

Four distinct colony-stimulating factors (CSFs) that promote survival, proliferation and differentiation of bone marrow precursor cells have been well characterized: granulocyte macrophage CSF (GM-CSF), granulocyte CSF (G-CSF), macrophage CSF (M-CSF), and Interleukin-3 (IL-3, Multi-CSF). Both GM-CSF and IL-3 are multipotential growth factors, stimulating proliferation of progenitor cells from more than one hematopoietic lineage. In contrast, G-CSF and M-CSF are lineage restricted hematopoietic growth factors, stimulating final mitotic divisions and the terminal cellular maturation of the partially differentiated hematopoietic progenitors. Macrophage CSF, also known as CSF1, is produced by monocytes, fibroblasts and endothelial cells. It stimulates the formation of macrophage colonies, enhances antibody-dependent, cell-mediated cytotoxicity by monocytes and macrophages, and inhibits bone resorption by osteoclasts. Natural human M-CSF is a dimeric glycoprotein of 70-90 kD molecular weight, existing in multiple glycosylation forms. It binds to a 165 kD glycoprotein of the receptor tyrosine kinase subclass III, a family that includes the receptors for platelet derived growth factor (PDGF) and stem cell factor (SCF).

Synonyms:

CSF-1; M-CSF

Note:

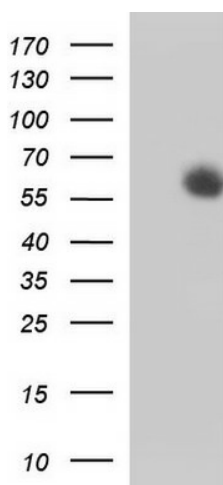
This antibody was generated by SDIX's Genomic Antibody Technology® (GAT). [Learn about GAT](#)

Protein Families:

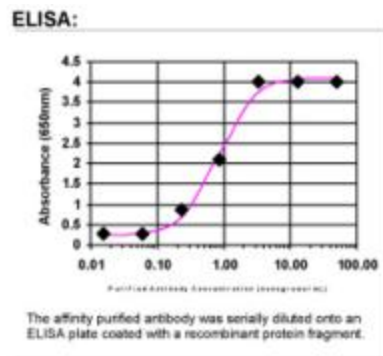
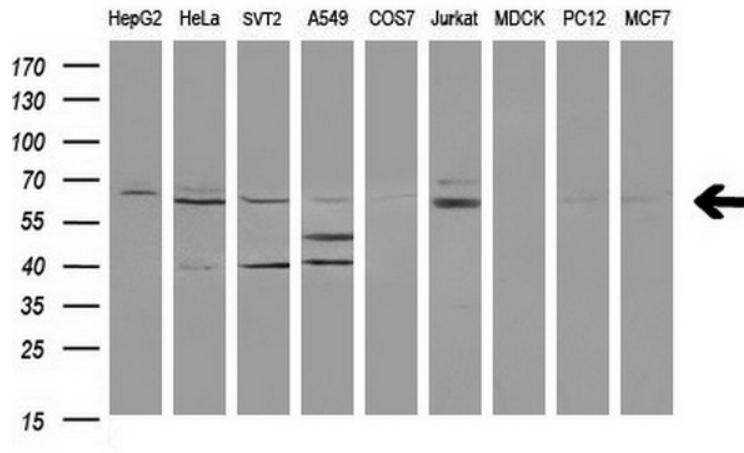
Druggable Genome, ES Cell Differentiation/IPS, Secreted Protein, Transmembrane

Protein Pathways:

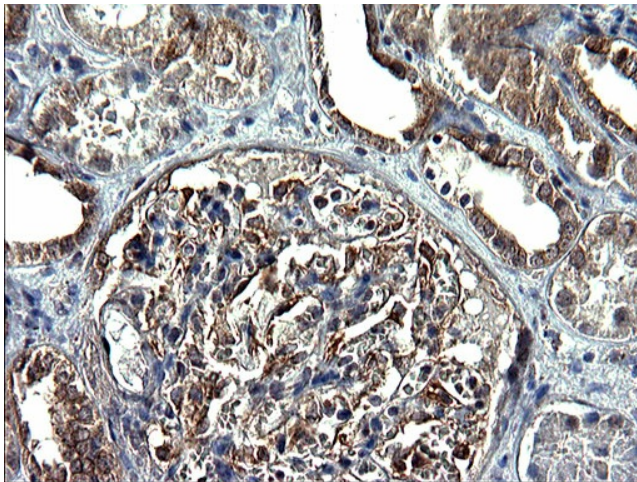
Cytokine-cytokine receptor interaction, Hematopoietic cell lineage

Product images:


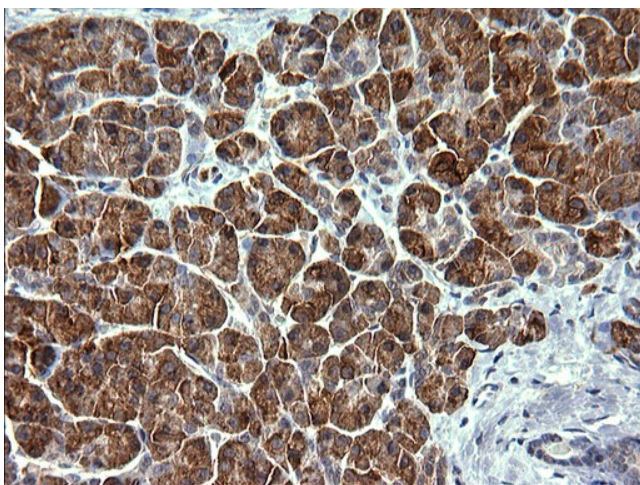
HEK293T cells were transfected with the pCMV6-ENTRY control (Cat# [PS100001], Left lane) or pCMV6-ENTRY CSF1 (Cat# [RC213103], Right lane) cDNA for 48 hrs and lysed. Equivalent amounts of cell lysates (5 ug per lane) were separated by SDS-PAGE and immunoblotted with anti-CSF1 (Cat# TA590307). Positive lysates [LY403534] (100ug) and [LC403534] (20ug) can be purchased separately from OriGene.



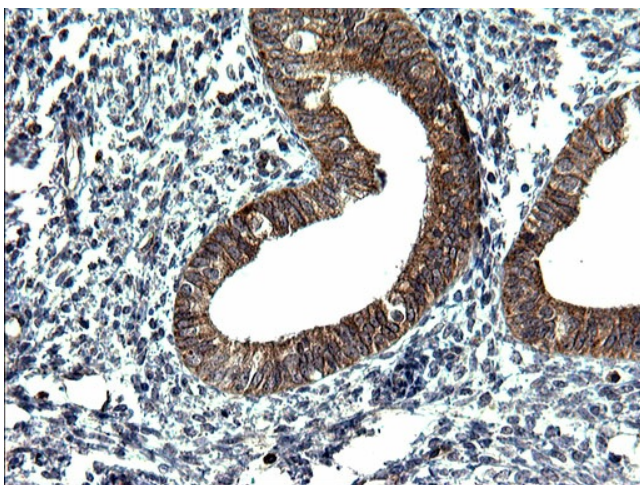
ELISA: MCSF Antibody - Affinity Purified



Immunohistochemical staining of paraffin-embedded Human Kidney tissue using anti-CSF1 rabbit polyclonal antibody. (TA590307). Heat-induced epitope retrieval by EDTA solution buffer pH 8.0 at 120°C for 3 min.



Immunohistochemical staining of paraffin-embedded Human pancreas tissue using anti-CSF1 rabbit polyclonal antibody. (TA590307). Heat-induced epitope retrieval by EDTA solution buffer pH 8.0 at 120°C for 3 min.



Immunohistochemical staining of paraffin-embedded Human endometrium tissue using anti-CSF1 rabbit polyclonal antibody. (TA590307). Heat-induced epitope retrieval by EDTA solution buffer pH 8.0 at 120°C for 3 min.