

Product datasheet for **TA590297**

Decorin (DCN) Rabbit Polyclonal Antibody

Product data:

Product Type:	Primary Antibodies
Applications:	ELISA, IHC, WB
Recommended Dilution:	WB 1:5000~20000, IHC 1:150, ELISA 1:100-1:2000
Reactivity:	Human, Mouse
Host:	Rabbit
Isotype:	IgG
Clonality:	Polyclonal
Immunogen:	DNA immunization. This antibody is specific for the N Terminus Region of the target protein.
Formulation:	20 mM Potassium Phosphate, 150 mM Sodium Chloride, pH 7.0
Concentration:	1.04mg/ml
Purification:	Purified from mouse ascites fluids or tissue culture supernatant by affinity chromatography (protein A/G)
Conjugation:	Unconjugated
Storage:	Store at -20°C as received.
Stability:	Stable for 12 months from date of receipt.
Gene Name:	decorin
Database Link:	NP_598010 Entrez Gene 13179 Mouse Entrez Gene 1634 Human P07585
Background:	The protein encoded by this gene is a small cellular or pericellular matrix proteoglycan that is closely related in structure to biglycan protein. The encoded protein and biglycan are thought to be the result of a gene duplication. This protein is a component of connective tissue, binds to type I collagen fibrils, and plays a role in matrix assembly. It contains one attached glycosaminoglycan chain. This protein is capable of suppressing the growth of various tumor cell lines. There are multiple alternatively spliced transcript variants known for this gene. This gene is a candidate gene for Marfan syndrome.
Synonyms:	CSCD; DSPG2; PG40; PGII; PGS2; SLRR1B



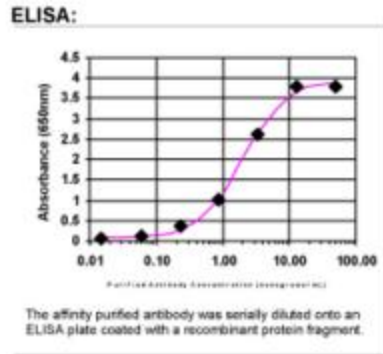
[View online »](#)

Note: This antibody was generated by SDIX's Genomic Antibody Technology® (GAT). [Learn about GAT](#)

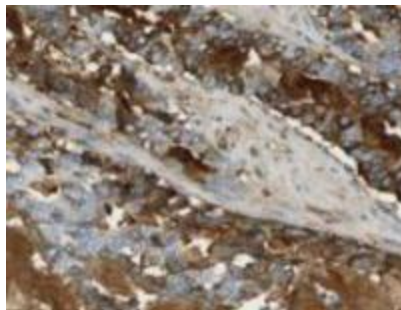
Protein Families: Druggable Genome, Secreted Protein

Protein Pathways: TGF-beta signaling pathway

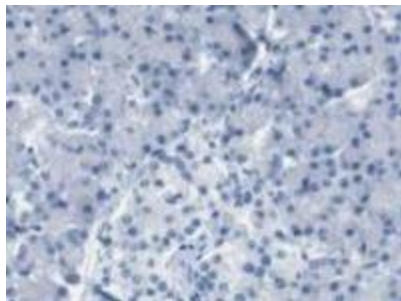
Product images:



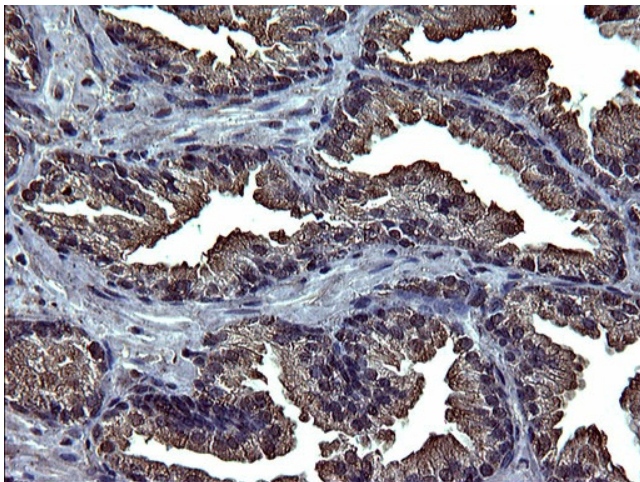
ELISA: Decorin Antibody



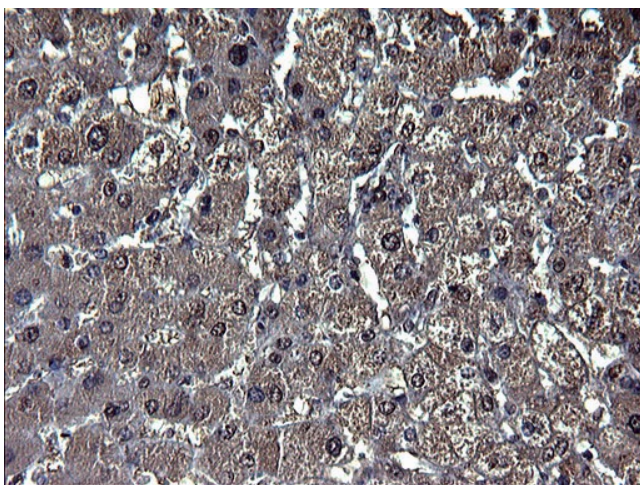
Immunohistochemistry: Decorin Antibody - Immunohistochemical staining for decorin (DCN) in human pancreatic cancer. Several pancreas cancers and occasional cases of other malignancies showed strong cytoplasmic staining. These images are the courtesy of the Human Proteome Resource (HPR).



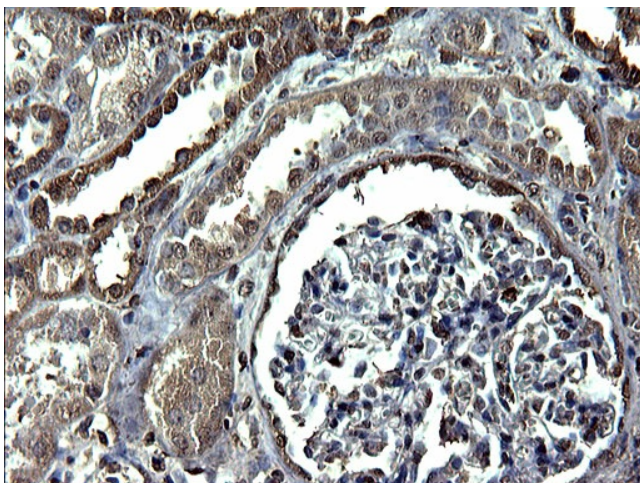
Immunohistochemistry: Decorin Antibody - Immunohistochemical staining for decorin (DCN) in Exocrine glandular and islet cells of normal human pancreas stained negative. Several pancreas cancers and occasional cases of other malignancies showed strong cytoplasmic staining. These images are the courtesy of the Human Proteome Resource (HPR).



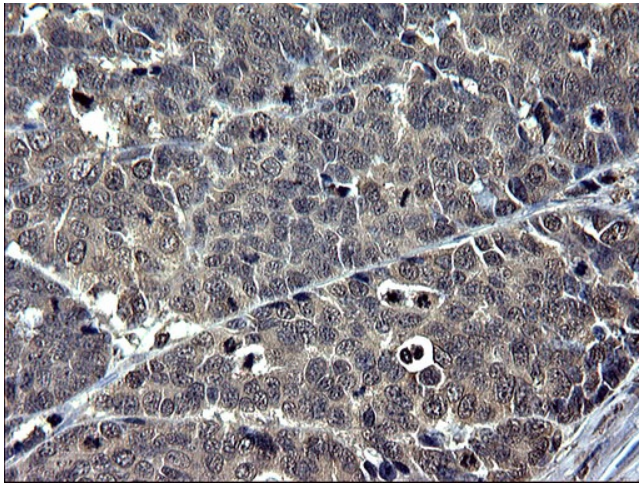
Immunohistochemical staining of paraffin-embedded Human prostate tissue using anti-DCN Rabbit Polyclonal antibody. (TA590297)



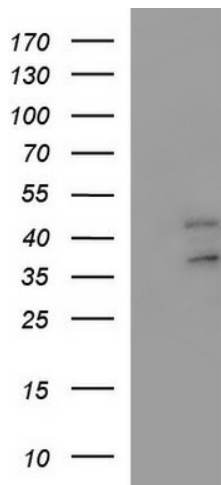
Immunohistochemical staining of paraffin-embedded Human liver tissue using anti-DCN Rabbit Polyclonal antibody. (TA590297)



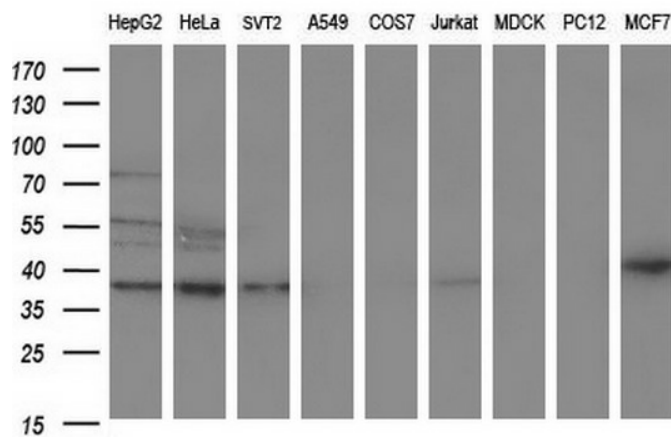
Immunohistochemical staining of paraffin-embedded Human Kidney tissue using anti-DCN Rabbit Polyclonal antibody. (TA590297)



Immunohistochemical staining of paraffin-embedded Adenocarcinoma of Human colon tissue using anti-DCN Rabbit Polyclonal antibody. (TA590297)



HEK293T cells were transfected with the pCMV6-ENTRY control (Cat# [PS100001], Left lane) or pCMV6-ENTRY DCN (Cat# [RC212223], Right lane) cDNA for 48 hrs and lysed. Equivalent amounts of cell lysates (5 ug per lane) were separated by SDS-PAGE and immunoblotted with anti-DCN(Cat# TA590297). Positive lysates [LY403339] (100ug) and [LC403339] (20ug) can be purchased separately from OriGene.



Western blot analysis of extracts (35ug) from 9 different cell lines by using anti-DCN Polyclonal antibody (HepG2: human; HeLa: human; SVT2: mouse; A549: human; COS7: monkey; Jurkat: human; MDCK: canine; PC12: rat; MCF7: human).