

## Product datasheet for **TA590293**

### Cyclin E2 (CCNE2) Rabbit Polyclonal Antibody

#### Product data:

|                       |  |
|-----------------------|--|
| Product Type:         | Primary Antibodies   |
| Applications:         | ELISA, IHC   |
| Recommended Dilution: | ELISA: 1:100-1:2000; IHC: 1:2500   |
| Reactivity:           | Human  |
| Host:                 | Rabbit   |
| Isotype:              | IgG  |
| Clonality:            | Polyclonal   |
| Immunogen:            | DNA immunization. This antibody is specific for the N Terminus Region of the target protein.   |
| Formulation:          | 20 mM Potassium Phosphate, 150 mM Sodium Chloride, pH 7.0  |
| Concentration:        | 0.70803 mg/ml  |
| Purification:         | Purified from mouse ascites fluids or tissue culture supernatant by affinity chromatography (protein A/G)  |
| Conjugation:          | Unconjugated   |
| Storage:              | Store at -20°C as received.  |
| Stability:            | Stable for 12 months from date of receipt.   |
| Gene Name:            | cyclin E2  |
| Database Link:        | <a href="#">NP_477097</a><br><a href="#">Entrez Gene 9134 Human</a><br><a href="#">O96020</a>  |
| Background:           | Cyclin E2 is a member of the cyclin E family that can associate with and activate Cdk2. Expression of cyclin E2 is essential for the control of the cell cycle at the late G1 and early S phase, and this protein may regulate distinct rate-limiting pathway(s) during this phase (1). Cyclin E2 specifically interacts with Cdk inhibitors of the CIP/KIP family and activates both Cdk2 and Cdk3. Expression of the viral E6 oncoprotein in normal human fibroblasts increases levels of cyclin E2, but not cyclin E1, while expression of the E7 oncoprotein upregulates both (2). Abnormally high levels of cyclin E expression have frequently been observed in human cancers (3). |
| Synonyms:             | CYCE2  |



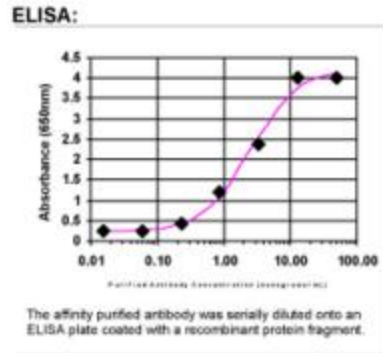
[View online »](#)

**Note:** This antibody was generated by SDIX's Genomic Antibody Technology® (GAT). [Learn about GAT](#)

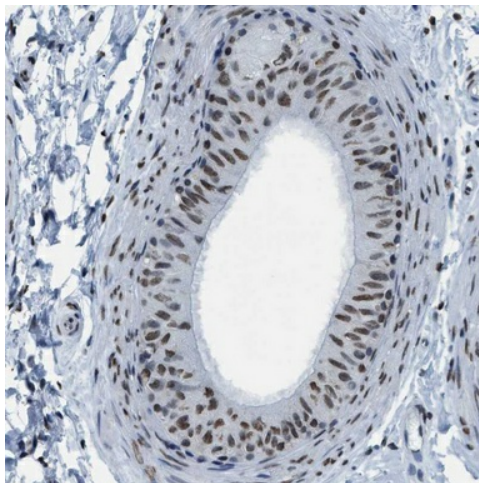
**Protein Families:** Druggable Genome

**Protein Pathways:** Cell cycle, Oocyte meiosis, p53 signaling pathway, Pathways in cancer, Prostate cancer, Small cell lung cancer

**Product images:**



ELISA: Cyclin E2 Antibody



Immunohistochemical staining of human epididymis shows moderate nuclear positivity in glandular cells. This validation was performed by Protein Atlas and the presentation of data is for informational purposes only.