

Product datasheet for **TA590277**

VEPH1 Rabbit Polyclonal Antibody

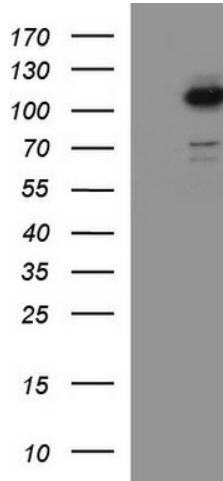
Product data:

Product Type:	Primary Antibodies
Applications:	ELISA, WB
Recommended Dilution:	WB 1:20000,ELISA 1:100-1:2000
Reactivity:	Human
Host:	Rabbit
Isotype:	IgG
Clonality:	Polyclonal
Immunogen:	DNA immunization. This antibody is specific for the Middle Region of the target protein.
Formulation:	20 mM Potassium Phosphate, 150 mM Sodium Chloride, pH 7.0
Concentration:	0.77mg/ml
Purification:	Purified from mouse ascites fluids or tissue culture supernatant by affinity chromatography (protein A/G)
Conjugation:	Unconjugated
Storage:	Store at -20°C as received.
Stability:	Stable for 12 months from date of receipt.
Gene Name:	ventricular zone expressed PH domain containing 1
Database Link:	NP_078897 Entrez Gene 79674 Human Q14D04
Synonyms:	MELT; VEPH
Note:	This antibody was generated by SDIX's Genomic Antibody Technology® (GAT). Learn about GAT



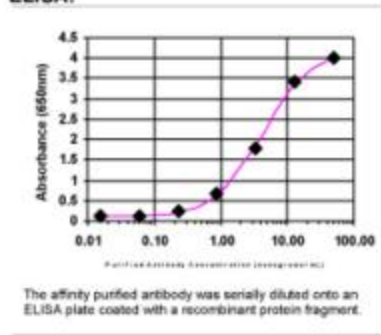
[View online »](#)

Product images:



HEK293T cells were transfected with the pCMV6-ENTRY control (Cat# [PS100001], Left lane) or pCMV6-ENTRY VEPH1 (Cat# [RC210974], Right lane) cDNA for 48 hrs and lysed. Equivalent amounts of cell lysates (5 ug per lane) were separated by SDS-PAGE and immunoblotted with anti-VEPH1(Cat# TA590277). Positive lysates [LY403012] (100ug) and [LC403012] (20ug) can be purchased separately from OriGene.

ELISA:



ELISA: VEPH1 Antibody