

Product datasheet for **TA590274**

STRA6 Rabbit Polyclonal Antibody

Product data:

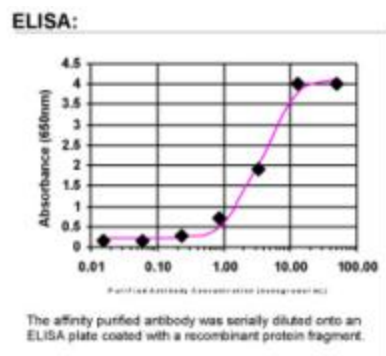
| | |
|-----------------------|---|
| Product Type: | Primary Antibodies |
| Applications: | ELISA |
| Recommended Dilution: | WB: 1:5000-1:20000; ELISA: 1:100-1:2000 |
| Reactivity: | Human |
| Host: | Rabbit |
| Isotype: | IgG |
| Clonality: | Polyclonal |
| Immunogen: | DNA immunization. This antibody is specific for the C Terminus Region of the target protein. |
| Formulation: | 20 mM Potassium Phosphate, 150 mM Sodium Chloride, pH 7.0 |
| Concentration: | 0.71898 mg/ml |
| Purification: | Purified from mouse ascites fluids or tissue culture supernatant by affinity chromatography (protein A/G) |
| Conjugation: | Unconjugated |
| Storage: | Store at -20°C as received. |
| Stability: | Stable for 12 months from date of receipt. |
| Gene Name: | signaling receptor and transporter of retinol STRA6 |
| Database Link: | NP_071764 Entrez Gene 64220 Human Q9BX79 |
| Background: | The protein encoded by this gene is a membrane protein involved in the metabolism of retinol. The encoded protein acts as a receptor for retinol/retinol binding protein complexes. This protein removes the retinol from the complex and transports it across the cell membrane. Defects in this gene are a cause of syndromic microphthalmia type 9 (MCOPS9). Several transcript variants encoding a few different isoforms have been found for this gene. [provided by RefSeq] |
| Synonyms: | MCOPCB8; MCOPS9; PP14296 |
| Note: | This antibody was generated by SDIX's Genomic Antibody Technology® (GAT). Learn about GAT |



[View online >](#)

Protein Families: Transmembrane

Product images:



ELISA: STRA6 Antibody