

## Product datasheet for **TA590266**

### Thymosin beta 10 (TMSB10) Rabbit Polyclonal Antibody

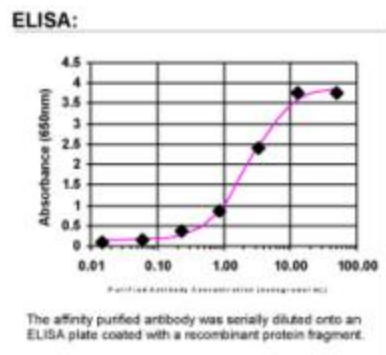
#### Product data:

Product Type:	Primary Antibodies
Applications:	ELISA
Recommended Dilution:	WB: 1:5000-1:20000; ELISA: 1:100-1:2000; IHC: 1:10-1:2000; IHC-P 1:250-1:2000
Reactivity:	Human
Host:	Rabbit
Isotype:	IgG
Clonality:	Polyclonal
Immunogen:	DNA immunization. This antibody is specific for the entire range of the target protein.
Formulation:	20 mM Potassium Phosphate, 150 mM Sodium Chloride, pH 7.0
Concentration:	0.86mg/ml
Purification:	Purified from mouse ascites fluids or tissue culture supernatant by affinity chromatography (protein A/G)
Conjugation:	Unconjugated
Storage:	Store at -20°C as received.
Stability:	Stable for 12 months from date of receipt.
Gene Name:	thymosin beta 10
Database Link:	<a href="#">NP_066926</a> <a href="#">Entrez Gene 9168 Human P63313</a>
Background:	Thymosin beta 10 plays an important role in the organization of the cytoskeleton. Thymosin beta 10 binds to and sequesters actin monomers (G actin) and therefore inhibits actin polymerization (By similarity).
Synonyms:	MIG12; TB10
Note:	This antibody was generated by SDIX's Genomic Antibody Technology ® (GAT). <a href="#">Learn about GAT</a>



[View online »](#)

## Product images:



ELISA: Thymosin beta 10 Antibody - Affinity Purified