

## Product datasheet for **TA590265**

### **RAB22A Rabbit Polyclonal Antibody**

#### **Product data:**

<b>Product Type:</b>	Primary Antibodies
<b>Applications:</b>	ELISA
<b>Recommended Dilution:</b>	WB 1:5000~20000,ELISA 1:100-1:2000
<b>Reactivity:</b>	Human, Dog, Rat, Monkey, Mouse
<b>Host:</b>	Rabbit
<b>Isotype:</b>	IgG
<b>Clonality:</b>	Polyclonal
<b>Immunogen:</b>	DNA immunization. This antibody is specific for the C Terminus Region of the target protein.
<b>Formulation:</b>	20 mM Potassium Phosphate, 150 mM Sodium Chloride, pH 7.0
<b>Concentration:</b>	1.32mg/ml
<b>Purification:</b>	Purified from mouse ascites fluids or tissue culture supernatant by affinity chromatography (protein A/G)
<b>Conjugation:</b>	Unconjugated
<b>Storage:</b>	Store at -20°C as received.
<b>Stability:</b>	Stable for 12 months from date of receipt.
<b>Gene Name:</b>	RAB22A, member RAS oncogene family
<b>Database Link:</b>	<a href="#">NP_065724</a> <a href="#">Entrez Gene 19334 Mouse</a> <a href="#">Entrez Gene 366265 Rat</a> <a href="#">Entrez Gene 403864 Dog</a> <a href="#">Entrez Gene 699283 Monkey</a> <a href="#">Entrez Gene 57403 Human</a> <a href="#">Q9UL26</a>
<b>Background:</b>	The protein encoded by this gene is a member of the RAB family of small GTPases. The GTP-bound form of the encoded protein has been shown to interact with early-endosomal antigen 1, and may be involved in the trafficking of and interaction between endosomal compartments. [provided by RefSeq]
<b>Synonyms:</b>	MGC16770
<b>Note:</b>	This antibody was generated by SDIX's Genomic Antibody Technology® (GAT). <a href="#">Learn about GAT</a>

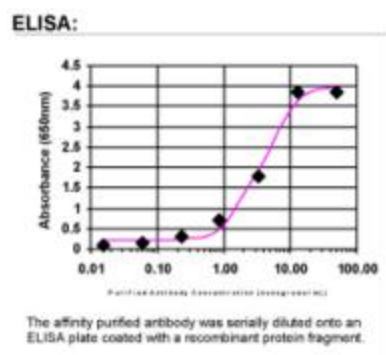


[View online »](#)

Protein Families: Druggable Genome

Protein Pathways: Endocytosis

### Product images:



ELISA: RAB22A Antibody