

Product datasheet for **TA590262**

TRPV6 Rabbit Polyclonal Antibody

Product data:

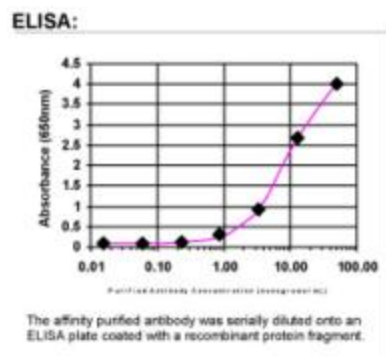
Product Type:	Primary Antibodies
Applications:	ELISA
Recommended Dilution:	WB: 1:5000-1:20000; ELISA: 1:100-1:2000
Reactivity:	Human
Host:	Rabbit
Isotype:	IgG
Clonality:	Polyclonal
Immunogen:	DNA immunization. This antibody is specific for the C Terminus Region of the target protein.
Formulation:	20 mM Potassium Phosphate, 150 mM Sodium Chloride, pH 7.0
Concentration:	0.95912 mg/ml
Purification:	Purified from mouse ascites fluids or tissue culture supernatant by affinity chromatography (protein A/G)
Conjugation:	Unconjugated
Storage:	Store at -20°C as received.
Stability:	Stable for 12 months from date of receipt.
Gene Name:	transient receptor potential cation channel subfamily V member 6
Database Link:	NP_061116 Entrez Gene 55503 Human Q9H1D0
Background:	TRPV6 is a membrane calcium channel which is responsible for the first step in calcium absorption in the intestine. It regulates calcium entry into the cell and is located in the apical brush border membrane of the intestinal enterocyte. Expression of TRPV6 appears to be vitamin D dependent as it is greatly reduced in animals that do not express the vitamin D receptor. Vitamin D treatment of colon cancer cells, Caco 2, also increases expression of TRPV6 gene.
Synonyms:	ABP; CAT1; CATL; ECAC2; HSA277909; LP6728; ZF; ZFAB
Note:	This antibody was generated by SDIX's Genomic Antibody Technology® (GAT). Learn about GAT



[View online »](#)

Protein Families: Druggable Genome, Ion Channels: Transient receptor potential, Transmembrane

Product images:



ELISA: TRPV6 Antibody