

Product datasheet for **TA590259**

CC2D1A Rabbit Polyclonal Antibody

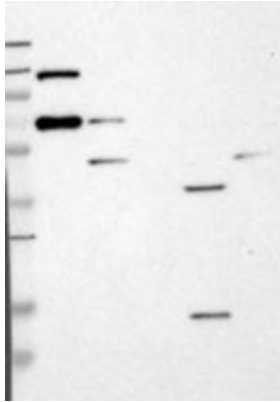
Product data:

Product Type:	Primary Antibodies
Applications:	ELISA, IHC, WB
Recommended Dilution:	WB: 1:5000-1:20000; ELISA: 1:100-1:2000; IHC: 1:10-1:2000; IHC-P 1:10-1:2000
Reactivity:	Human
Host:	Rabbit
Isotype:	IgG
Clonality:	Polyclonal
Immunogen:	DNA immunization. This antibody is specific for the Middle Region of the target protein.
Formulation:	20 mM Potassium Phosphate, 150 mM Sodium Chloride, pH 7.0
Concentration:	1.12mg/ml
Purification:	Purified from mouse ascites fluids or tissue culture supernatant by affinity chromatography (protein A/G)
Conjugation:	Unconjugated
Storage:	Store at -20°C as received.
Stability:	Stable for 12 months from date of receipt.
Gene Name:	coiled-coil and C2 domain containing 1A
Database Link:	NP_060191 Entrez Gene 54862 Human Q6P1N0
Background:	TOUF, or Cc2d1a, is a signal transducer that participates in the positive regulation of the I-kappaB kinase/NF-kappaB cascade. Cc2d1a has been implicated as playing an important role in human cognitive development, with a particular relation to Nonsyndromic Mental Retardation.
Synonyms:	Aki-1; FREUD-1; Freud-1/Aki1; Lgd2; MRT3; TAPE
Note:	This antibody was generated by SDIX's Genomic Antibody Technology® (GAT). Learn about GAT

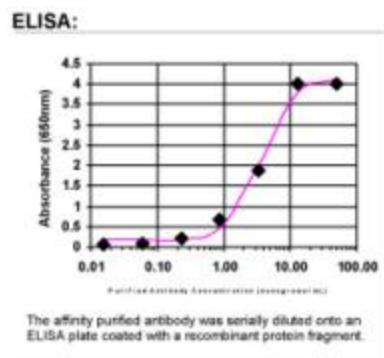


[View online »](#)

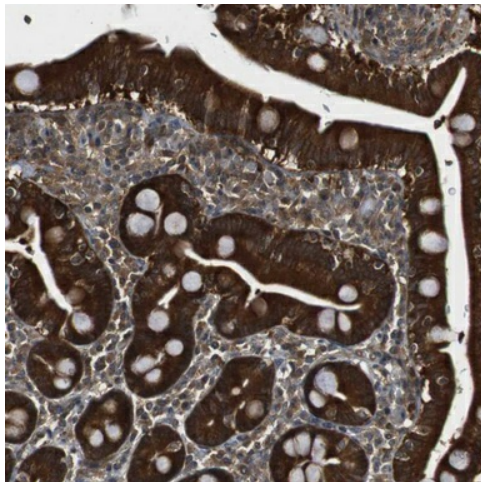
Product images:



Western Blot: CC2D1A Antibody - Samples: Lane 1, Marker: 250, 130, 95, 72, 55, 36, 28, 17, 11 Lane 2, RT-4 Lane 3, U-251MG sp Lane 4, Human Plasma Lane 5, Liver Lane 6, Tonsil, Target weight: 104, 64, 40, 25 (splice variants) Validation score: 2 Validation description: Supportive - Band of predicted size in kDa (+/-20%) with additional bands present.



ELISA: CC2D1A Antibody



Immunohistochemical staining of human duodenum shows strong cytoplasmic positivity in glandular cells. Antibody dilution:1:750. Image and statement courtesy of the Human Protein Atlas (HPA).