

## Product datasheet for **TA590257**

### WDR1 Rabbit Polyclonal Antibody

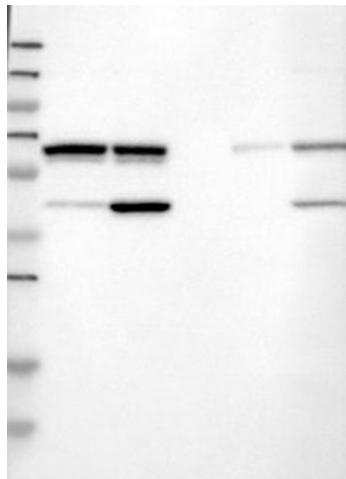
#### Product data:

Product Type:	Primary Antibodies
Applications:	ELISA, IF, IHC, WB
Recommended Dilution:	WB: 1:500; ELISA: 1:100-1:2000; IHC: 1:900; IF: 1:200
Reactivity:	Human
Host:	Rabbit
Isotype:	IgG
Clonality:	Polyclonal
Immunogen:	DNA immunization. This antibody is specific for the C Terminus Region of the target protein.
Formulation:	20 mM Potassium Phosphate, 150 mM Sodium Chloride, pH 7.0
Concentration:	1.18mg/ml
Purification:	Purified from mouse ascites fluids or tissue culture supernatant by affinity chromatography (protein A/G)
Conjugation:	Unconjugated
Storage:	Store at -20°C as received.
Stability:	Stable for 12 months from date of receipt.
Gene Name:	WD repeat domain 1
Database Link:	<a href="#">NP_059830</a> <a href="#">Entrez Gene 9948 Human</a> <a href="#">O75083</a>
Background:	WDR1 (WD repeat domain 1) induces disassembly of actin filaments. The protein contains 9 WD repeats are involved in protein protein interactions and are approximately 30 to 40 amino acid domains containing several conserved residues, mostly including a trp-asp at the C terminal end.
Synonyms:	AIP1; HEL-S-52; NORI-1
Note:	This antibody was generated by SDIX's Genomic Antibody Technology® (GAT). <a href="#">Learn about GAT</a>

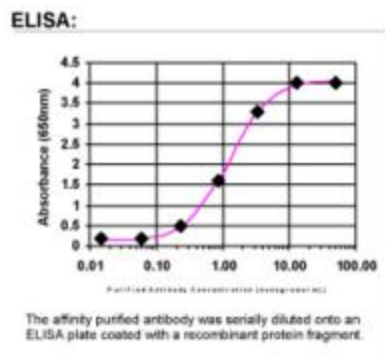


[View online »](#)

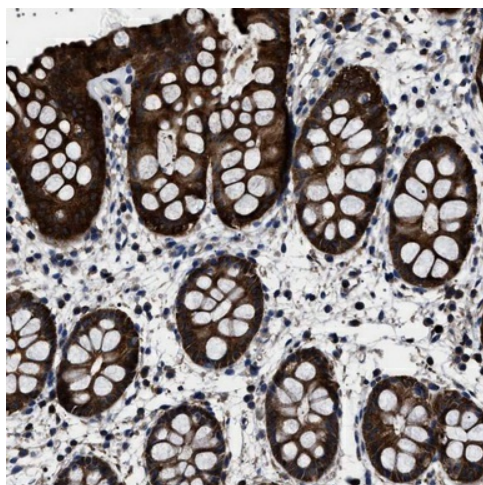
Product images:



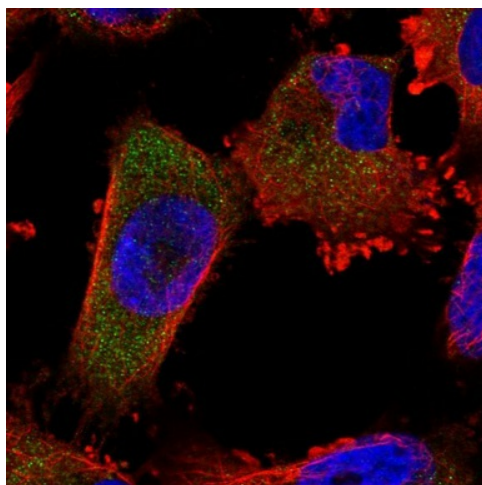
Lane 1: Marker [kDa] 250, 130, 95, 72, 55, 36, 28, 17, 11; Lane 2: RT-4; Lane 3: U-251 MG; Lane 4: Human Plasma; Lane 5: Liver; Lane 6: Tonsil. This validation was performed by Protein Atlas and the presentation of data is for informational purposes only.



ELISA: WDR1 Antibody - Affinity Purified



Immunohistochemical staining of human rectum shows strong cytoplasmic positivity in glandular cells. This validation was performed by Protein Atlas and the presentation of data is for informational purposes only.



Immunofluorescent staining of human cell line U-251 MG shows positivity in cytoplasm. This validation was performed by Protein Atlas and the presentation of data is for informational purposes only.