

Product datasheet for **TA590255**

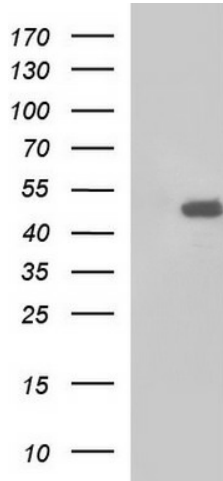
TOB2 Rabbit Polyclonal Antibody

Product data:

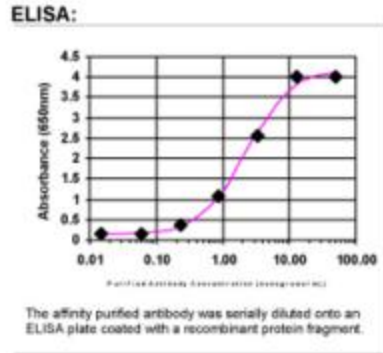
| | |
|-----------------------|---|
| Product Type: | Primary Antibodies |
| Applications: | ELISA, WB |
| Recommended Dilution: | WB 1:20000, ELISA 1:100-1:2000 |
| Reactivity: | Human |
| Host: | Rabbit |
| Isotype: | IgG |
| Clonality: | Polyclonal |
| Immunogen: | DNA immunization. This antibody is specific for the C Terminus Region of the target protein. |
| Formulation: | 20 mM Potassium Phosphate, 150 mM Sodium Chloride, pH 7.0 |
| Concentration: | 1.02263 mg/ml |
| Purification: | Purified from mouse ascites fluids or tissue culture supernatant by affinity chromatography (protein A/G) |
| Conjugation: | Unconjugated |
| Storage: | Store at -20°C as received. |
| Stability: | Stable for 12 months from date of receipt. |
| Gene Name: | transducer of ERBB2, 2 |
| Database Link: | NP_057356 Entrez Gene 10766 Human Q14106 |
| Background: | TOB2 belongs to the TOB (see TOB1; MIM 605523)/BTG1 (MIM 109580) family of antiproliferative proteins, which are involved in the regulation of cell cycle progression. [supplied by OMIM] |
| Synonyms: | APRO5; TOB4; TOBL; TROB2 |
| Note: | This antibody was generated by SDIX's Genomic Antibody Technology® (GAT). Learn about GAT |



[View online »](#)

Product images:


HEK293T cells were transfected with the pCMV6-ENTRY control (Cat# [PS100001], Left lane) or pCMV6-ENTRY TOB2 (Cat# [RC207898], Right lane) cDNA for 48 hrs and lysed. Equivalent amounts of cell lysates (5 ug per lane) were separated by SDS-PAGE and immunoblotted with anti-TOB2(Cat# TA590255). Positive lysates [LY402530] (100ug) and [LC402530] (20ug) can be purchased separately from OriGene.



ELISA: TOB2 Antibody