

Product datasheet for **TA590253**

Geminin (GMNN) Rabbit Polyclonal Antibody

Product data:

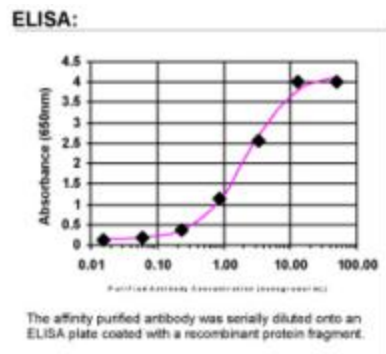
Product Type:	Primary Antibodies
Applications:	ELISA
Recommended Dilution:	ELISA: 1:100-1:2000
Reactivity:	Human
Host:	Rabbit
Isotype:	IgG
Clonality:	Polyclonal
Immunogen:	DNA immunization. This antibody is specific for the Middle Region of the target protein.
Formulation:	20 mM Potassium Phosphate, 150 mM Sodium Chloride, pH 7.0
Concentration:	1.01241 mg/ml
Purification:	Purified from mouse ascites fluids or tissue culture supernatant by affinity chromatography (protein A/G)
Conjugation:	Unconjugated
Storage:	Store at -20°C as received.
Stability:	Stable for 12 months from date of receipt.
Gene Name:	geminin DNA replication inhibitor
Database Link:	NP_056979 Entrez Gene 51053 Human O75496
Background:	The DNA replication (origin) licensing system is necessary for duplicating the genome in each cell cycle. Geminin is a protein that prevents DNA replication by blocking the MCM complex incorporation into prereplication complex (pre-RC). It is absent during G1 phase and accumulates during S, G2, and M phases of mitosis. It is then degraded during the metaphase-anaphase transition allowing replication to occur during subsequent cycles. Geminin has also been implicated in maintaining integrity of the male germline genome.
Synonyms:	Gem; MGORS6
Note:	This antibody was generated by SDIX's Genomic Antibody Technology® (GAT). Learn about GAT



[View online »](#)

Protein Families: Druggable Genome, Stem cell - Pluripotency

Product images:



ELISA: Geminin Antibody