

Product datasheet for **TA590251**

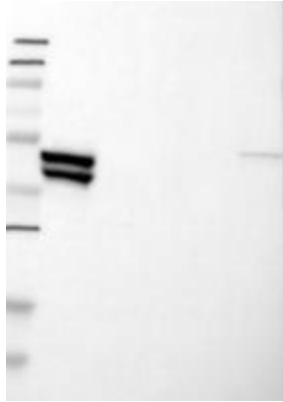
KRT23 Rabbit Polyclonal Antibody

Product data:

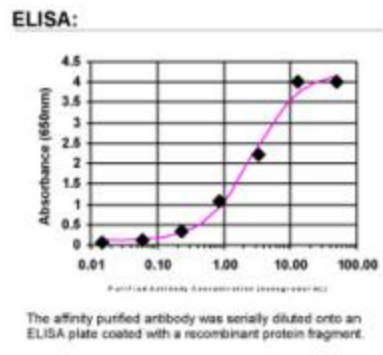
Product Type:	Primary Antibodies
Applications:	ELISA, IHC, WB
Recommended Dilution:	WB: 1:5000-1:20000; ELISA: 1:100-1:2000; IHC: 1:10-1:2000; IHC-P 1:10-1:2000
Reactivity:	Human
Host:	Rabbit
Isotype:	IgG
Clonality:	Polyclonal
Immunogen:	DNA immunization. This antibody is specific for the C Terminus Region of the target protein (NM_015515).
Formulation:	20 mM Potassium Phosphate, 150 mM Sodium Chloride, pH 7.0
Concentration:	0.97mg/ml
Purification:	Purified from mouse ascites fluids or tissue culture supernatant by affinity chromatography (protein A/G)
Conjugation:	Unconjugated
Storage:	Store at -20°C as received.
Stability:	Stable for 12 months from date of receipt.
Gene Name:	keratin 23
Database Link:	NP_056330 Entrez Gene 25984 Human Q9C075
Background:	The protein encoded by this gene is a member of the keratin family. The keratins are intermediate filament proteins responsible for the structural integrity of epithelial cells and are subdivided into cytokeratins and hair keratins. The type I cytokeratins consist of acidic proteins which are arranged in pairs of heterotypic keratin chains. The type I cytokeratin genes are clustered in a region of chromosome 17q12-q21.
Synonyms:	CK23; HAIK1; K23
Note:	This antibody was generated by SDIX's Genomic Antibody Technology® (GAT). Learn about GAT



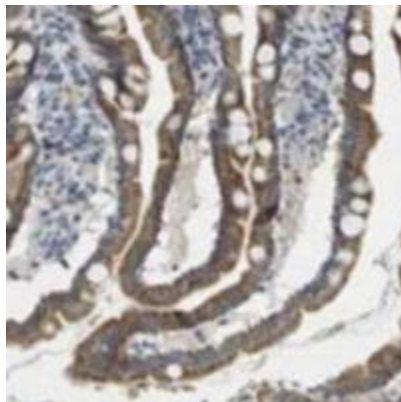
[View online »](#)

Product images:


Western Blot: KRT23 Antibody - Samples: Lane 1, Marker: 250, 130, 95, 72, 55, 36, 28, 17, 11 Lane 2, RT-4 Lane 3, U-251MG sp Lane 4, Human Plasma Lane 5, Liver Lane 6, Tonsil, Target weight: 48, 4 (splice variants) Validation score: 2 Validation description: Supportive - Band of predicted size in kDa (+/-20%) with additional bands present.



ELISA: KRT23 Antibody



Immunohistochemistry: KRT23 Antibody - Normal glandular cells showed moderate cytoplasmic immunoreactivity while most other cell types were weakly stained or negative. Exocrine pancreas, placental trophoblasts, adrenal cortical cells and Leydig cells in testis revealed strong positivity. A majority of malignant cells displayed moderate cytoplasmic immunoreactivity. Thyroid cancers and few cases of colorectal cancers revealed strong positivity. Most skin cancers, malignant lymphomas and gliomas were negative. Image and statement courtesy of the Human Protein Atlas (HPA). View all of the IHC expression profiles performed by the Human Protein Atlas.