

## Product datasheet for **TA590249**

### Lipin 2 (LPIN2) Rabbit Polyclonal Antibody

#### Product data:

Product Type:	Primary Antibodies
Applications:	ELISA, IHC, WB
Recommended Dilution:	WB 1:20000, IHC 1:150, ELISA 1:100-1:2000
Reactivity:	Human
Host:	Rabbit
Isotype:	IgG
Clonality:	Polyclonal
Immunogen:	DNA immunization. This antibody is specific for the Middle Region of the target protein.
Formulation:	20 mM Potassium Phosphate, 150 mM Sodium Chloride, pH 7.0
Concentration:	0.98mg/ml
Purification:	Purified from mouse ascites fluids or tissue culture supernatant by affinity chromatography (protein A/G)
Conjugation:	Unconjugated
Storage:	Store at -20°C as received.
Stability:	Stable for 12 months from date of receipt.
Gene Name:	lipin 2
Database Link:	<a href="#">NP_055461</a> <a href="#">Entrez Gene 9663 Human</a> <a href="#">Q92539</a>



[View online »](#)

**Background:**

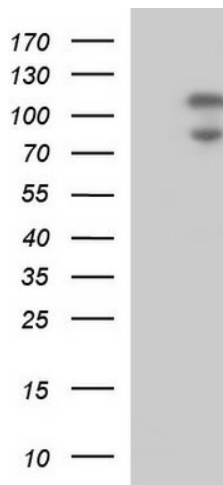
Lipin 2 plays important roles in controlling the metabolism of fatty acids at different levels. Lipin 2 acts as a magnesium-dependent phosphatidate phosphatase enzyme which catalyzes the conversion of phosphatidic acid to diacylglycerol during triglyceride, phosphatidylcholine and phosphatidylethanolamine biosynthesis in the reticulum endoplasmic membrane. Lipin 2 also acts also as a nuclear transcriptional coactivator for PPARGC1A to modulate lipid metabolism. By similarity, defects in LPIN2 are the cause of Majeed syndrome (MAJEEDS) [MIM:609628]. An autosomal recessive syndrome characterized by chronic recurrent multifocal osteomyelitis that is of early onset with a lifelong course, congenital dyserythropoietic anemia that presents as hypochromic, microcytic anemia during the first year of life and ranges from mild to transfusion-dependent, and transient inflammatory dermatosis, often manifesting as Sweet syndrome (neutrophilic skin infiltration).

**Synonyms:**

KIAA0249

**Note:**

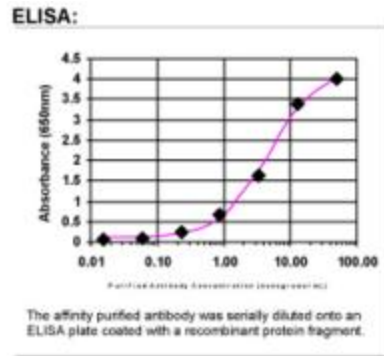
This antibody was generated by SDIX's Genomic Antibody Technology® (GAT). [Learn about GAT](#)

**Product images:**


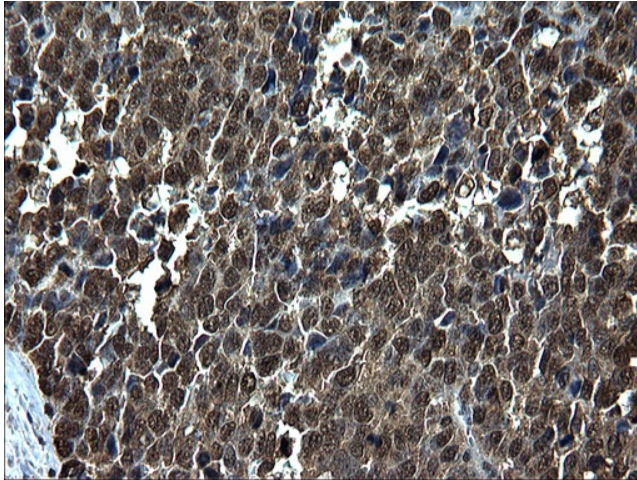
HEK293T cells were transfected with the pCMV6-ENTRY control (Cat# [PS100001], Left lane) or pCMV6-ENTRY LPIN2 (Cat# [RC224070], Right lane) cDNA for 48 hrs and lysed. Equivalent amounts of cell lysates (5 ug per lane) were separated by SDS-PAGE and immunoblotted with anti-LPIN2 (Cat# TA590249). Positive lysates [LY402358] (100ug) and [LC402358] (20ug) can be purchased separately from OriGene.



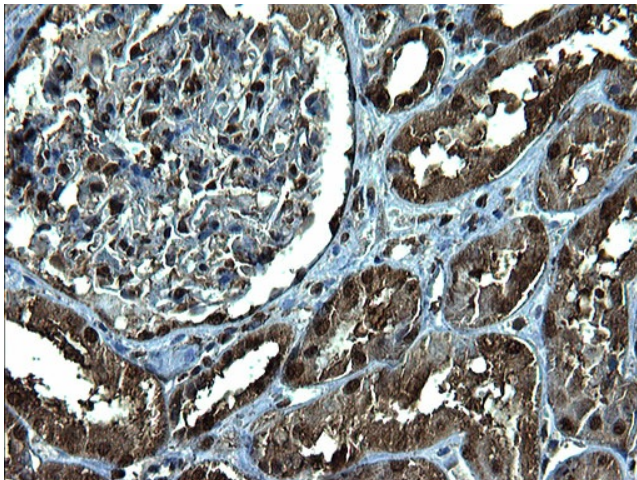
Western Blot: Lipin 2 Antibody - Western Blot was performed using affinity purified SEQer LPIN2 antibody, aa (351-450) antibody. The lanes contain 5-30ug of a whole cell extract. Final concentration of antibodies = 0.1ug/ml (1:10,000 dilution). The blot was probed overnight with the SEQer LPIN2 antibody, aa (351-450) antibody. Blot was then washed according to protocol and probed with goat-anti-Rabbit-HRP conjugate at 1:5000 dilution, washed and developed using chemiluminescence (film exposure 5-30sec). The protein was detected as represented by the band shown.



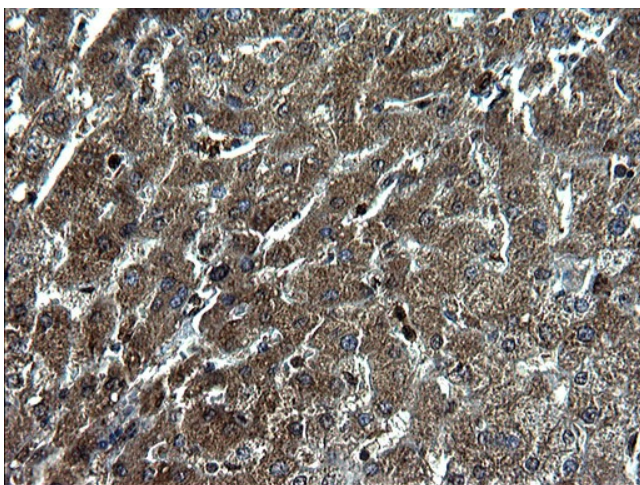
ELISA: Lipin 2 Antibody



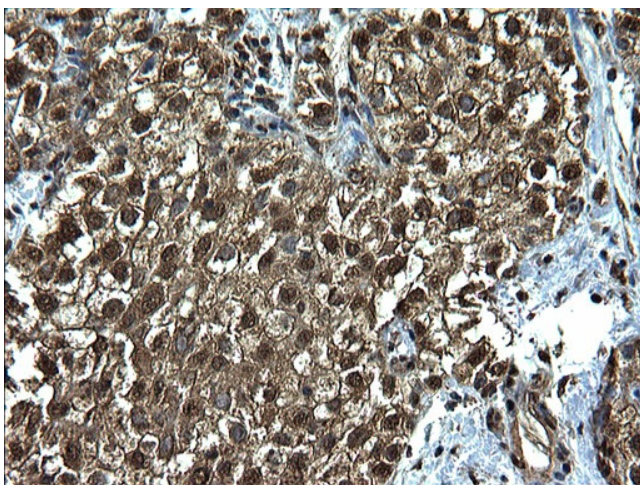
Immunohistochemical staining of paraffin-embedded Adenocarcinoma of Human colon tissue using anti-LPIN2 Rabbit Polyclonal antibody. (TA590249)



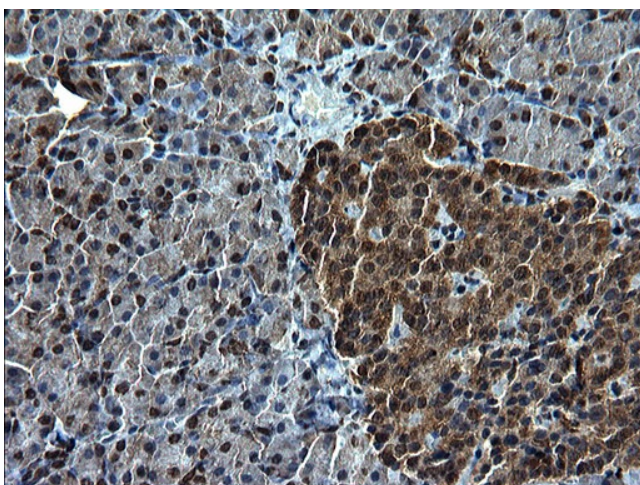
Immunohistochemical staining of paraffin-embedded Human Kidney tissue using anti-LPIN2 Rabbit Polyclonal antibody. (TA590249)



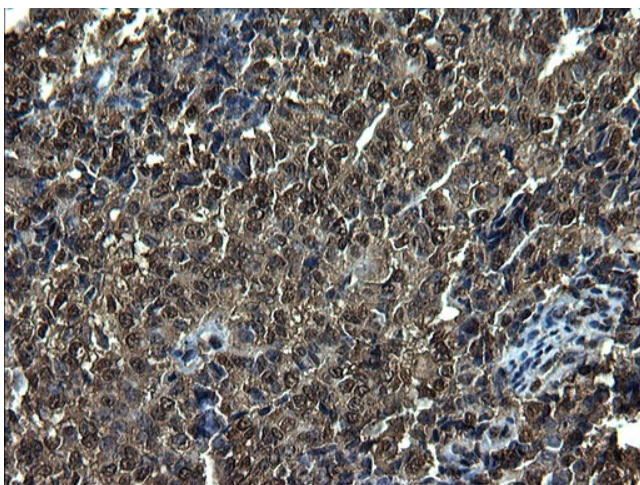
Immunohistochemical staining of paraffin-embedded Human liver tissue using anti-LPIN2 Rabbit Polyclonal antibody. (TA590249)



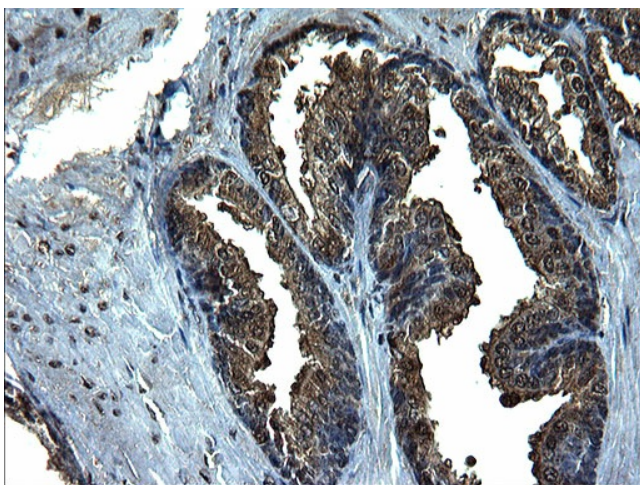
Immunohistochemical staining of paraffin-embedded Carcinoma of Human liver tissue using anti-LPIN2 Rabbit Polyclonal antibody. (TA590249)



Immunohistochemical staining of paraffin-embedded Human pancreas tissue using anti-LPIN2 Rabbit Polyclonal antibody. (TA590249)



Immunohistochemical staining of paraffin-embedded Adenocarcinoma of Human endometrium tissue using anti-LPIN2 Rabbit Polyclonal antibody. (TA590249)



Immunohistochemical staining of paraffin-embedded Human prostate tissue using anti-LPIN2 Rabbit Polyclonal antibody. (TA590249)