

Product datasheet for **TA590247**

UBE2S Rabbit Polyclonal Antibody

Product data:

Product Type:	Primary Antibodies
Applications:	IHC, WB
Recommended Dilution:	WB 1:5000~20000, IHC 1:150,ELISA 1:100-1:2000
Reactivity:	Human, Monkey, Mouse
Host:	Rabbit
Isotype:	IgG
Clonality:	Polyclonal
Immunogen:	DNA immunization. This antibody was made against a protein fragment from the C Terminus Region (NM_014501).
Formulation:	20 mM Potassium Phosphate, 150 mM Sodium Chloride, pH 7.0
Concentration:	1.17mg/ml
Purification:	Purified from mouse ascites fluids or tissue culture supernatant by affinity chromatography (protein A/G)
Conjugation:	Unconjugated
Storage:	Store at -20°C as received.
Stability:	Stable for 12 months from date of receipt.
Gene Name:	ubiquitin conjugating enzyme E2 S
Database Link:	NP_055316 Entrez Gene 77891 Mouse Entrez Gene 700592 Monkey Entrez Gene 27338 Human Q16763
Background:	UBE2S, also known as ubiquitin-conjugating enzyme E2S, is a member of the ubiquitin-conjugating enzyme family. This protein is able to form a thiol ester linkage with ubiquitin in an ubiquitin activating enzyme-dependent manner, a characteristic property of ubiquitin carrier proteins. It catalyzes the covalent attachment of ubiquitin to other proteins.
Synonyms:	E2-EPF; E2EPF; EPF5
Note:	This antibody was generated by SDIX's Genomic Antibody Technology® (GAT). Learn about GAT

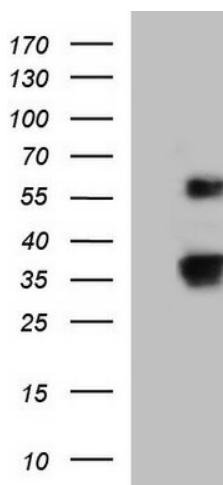


[View online »](#)

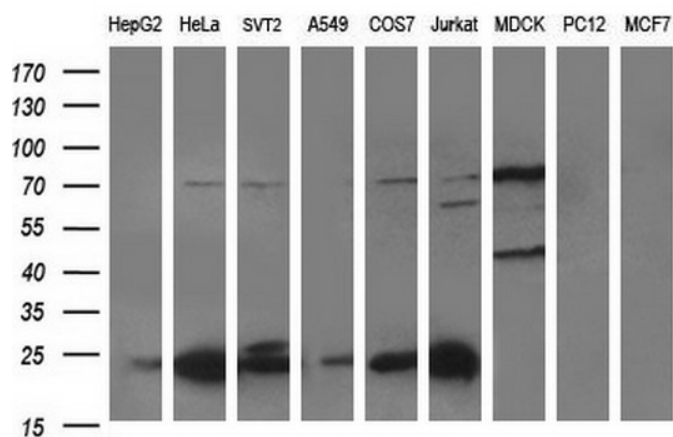
Protein Families: Druggable Genome

Protein Pathways: Ubiquitin mediated proteolysis

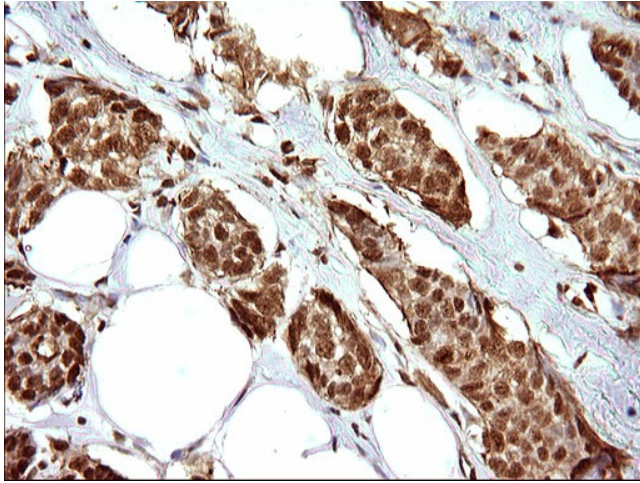
Product images:



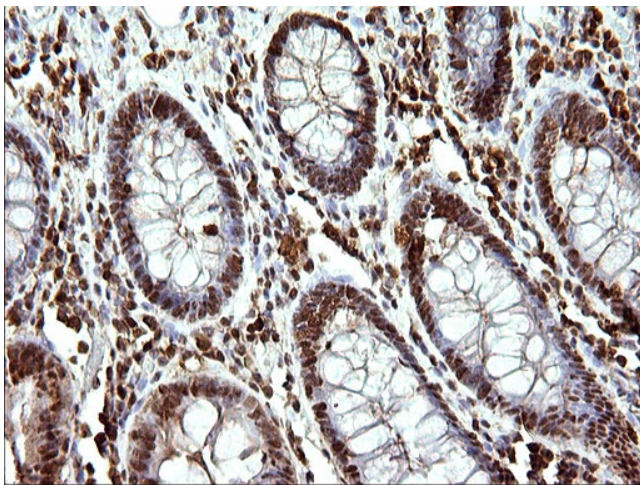
HEK293T cells were transfected with the pCMV6-ENTRY control (Left lane) or pCMV6-ENTRY UBE2S ([RC224851], Right lane) cDNA for 48 hrs and lysed. Equivalent amounts of cell lysates (5 ug per lane) were separated by SDS-PAGE and immunoblotted with anti-UBE2S. Positive lysates [LY402342] (100ug) and [LC402342] (20ug) can be purchased separately from OriGene.



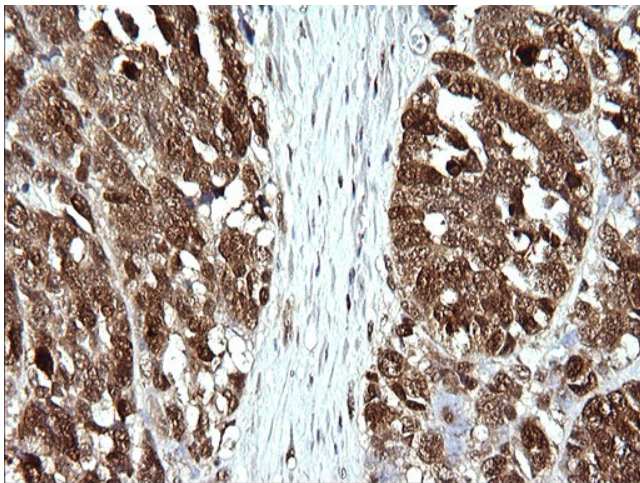
Western blot analysis of extracts (35ug) from 9 different cell lines by using anti-UBE2S polyclonal antibody (HepG2: human; HeLa: human; SVT2: mouse; A549: human; COS7: monkey; Jurkat: human; MDCK: canine; PC12: rat; MCF7: human).



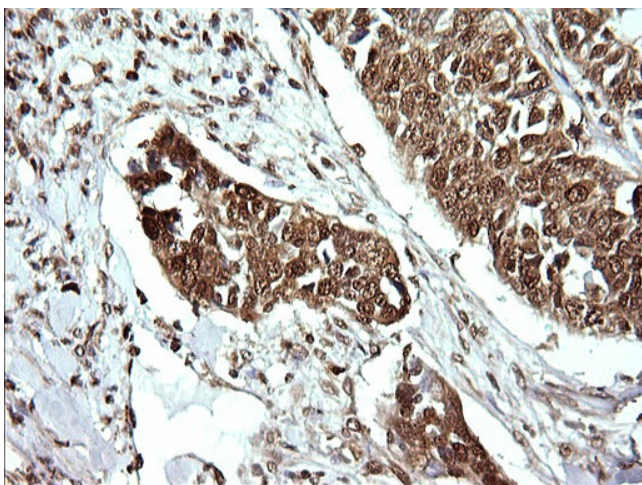
Immunohistochemical staining of paraffin-embedded Adenocarcinoma of Human breast tissue using anti-UBE2S rabbit polyclonal antibody. (TA590247)



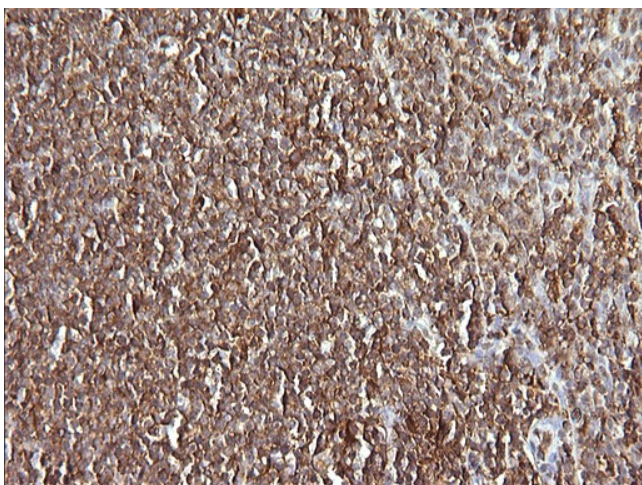
Immunohistochemical staining of paraffin-embedded Human colon tissue using anti-UBE2S rabbit polyclonal antibody. (TA590247)



Immunohistochemical staining of paraffin-embedded Adenocarcinoma of Human colon tissue using anti-UBE2S rabbit polyclonal antibody. (TA590247)



Immunohistochemical staining of paraffin-embedded Carcinoma of Human bladder tissue using anti-UBE2S rabbit polyclonal antibody. (TA590247)



Immunohistochemical staining of paraffin-embedded Human lymph node tissue using anti-UBE2S rabbit polyclonal antibody. (TA590247)