

Product datasheet for **TA590246**

TINAG Rabbit Polyclonal Antibody

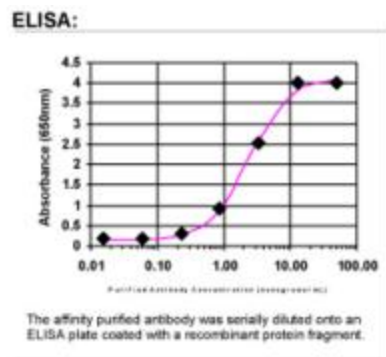
Product data:

Product Type:	Primary Antibodies
Applications:	ELISA
Recommended Dilution:	WB: 1:5000-1:20000; ELISA: 1:100-1:2000
Reactivity:	Human
Host:	Rabbit
Isotype:	IgG
Clonality:	Polyclonal
Immunogen:	DNA immunization. This antibody is specific for the N Terminus Region of the target protein.
Formulation:	20 mM Potassium Phosphate, 150 mM Sodium Chloride, pH 7.0
Concentration:	0.80949 mg/ml
Purification:	Purified from mouse ascites fluids or tissue culture supernatant by affinity chromatography (protein A/G)
Conjugation:	Unconjugated
Storage:	Store at -20°C as received.
Stability:	Stable for 12 months from date of receipt.
Gene Name:	tubulointerstitial nephritis antigen
Database Link:	NP_055279 Entrez Gene 27283 Human Q9UJW2
Background:	TINAG is a basement membrane glycoprotein initially identified as a target of antibodies in some forms of immunologically mediated tubulointerstitial nephritis. [supplied by OMIM]
Synonyms:	TIN-AG
Note:	This antibody was generated by SDIX's Genomic Antibody Technology® (GAT). Learn about GAT
Protein Families:	Druggable Genome, Protease, Secreted Protein



[View online »](#)

Product images:



ELISA: TINAG Antibody