

Product datasheet for **TA590243**

TSP50 (PRSS50) Rabbit Polyclonal Antibody

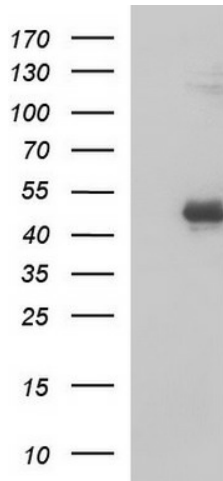
Product data:

Product Type:	Primary Antibodies
Applications:	ELISA, IHC, WB
Recommended Dilution:	WB 1:5000~20000, ELISA 1:100-1:2000
Reactivity:	Human
Host:	Rabbit
Isotype:	IgG
Clonality:	Polyclonal
Immunogen:	DNA immunization. This antibody is specific for the N Terminus Region of the target protein.
Formulation:	20 mM Potassium Phosphate, 150 mM Sodium Chloride, pH 7.0
Concentration:	1.1mg/ml
Purification:	Purified from mouse ascites fluids or tissue culture supernatant by affinity chromatography (protein A/G)
Conjugation:	Unconjugated
Storage:	Store at -20°C as received.
Stability:	Stable for 12 months from date of receipt.
Gene Name:	serine protease 50
Database Link:	NP_037402 Entrez Gene 29122 Human Q9UI38
Background:	TSP50 is a possible protease in human testes. It may function in mammalian spermatogenesis. Its linear catalytic structure is similar to many serine proteases, except for a Thr-for-Ser residual catalytic site substitution.
Synonyms:	CT20; TSP50
Note:	This antibody was generated by SDIX's Genomic Antibody Technology® (GAT). Learn about GAT
Protein Families:	Druggable Genome, Protease

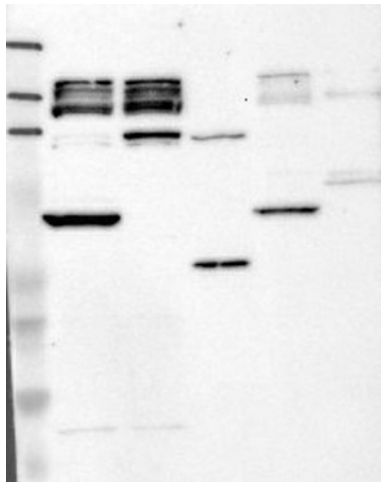


[View online »](#)

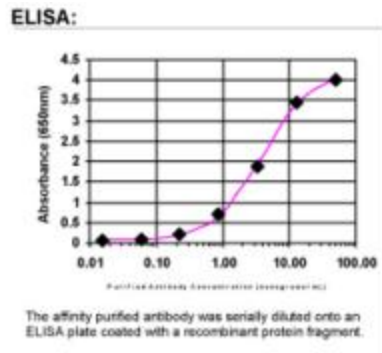
Product images:



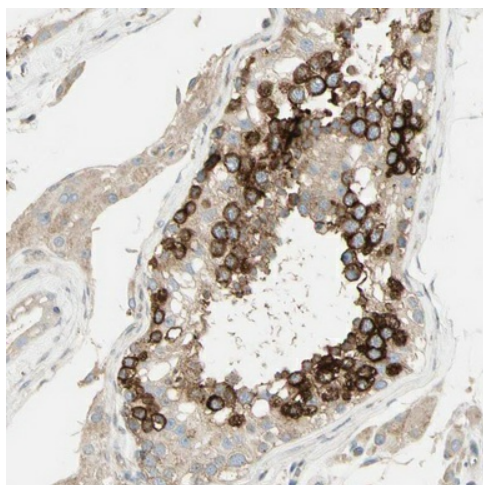
HEK293T cells were transfected with the pCMV6-ENTRY control (Cat# [PS100001], Left lane) or pCMV6-ENTRY PRSS50 (Cat# [RC205514], Right lane) cDNA for 48 hrs and lysed. Equivalent amounts of cell lysates (5 ug per lane) were separated by SDS-PAGE and immunoblotted with anti-PRSS5(Cat# TA590243). Positive lysates [LY402236] (100ug) and [LC402236] (20ug) can be purchased separately from OriGene.



Lane 1: Marker [kDa] 219, 111, 83, 48, 32, 26, 17; Lane 2: RT-4; Lane 3: U-251 MG; Lane 4: Human Plasma; Lane 5: Liver; Lane 6: Tonsil. This validation was performed by Protein Atlas and the presentation of data is for informational purposes only.



ELISA: TSP50 Antibody



Immunohistochemical staining of human testis shows strong cytoplasmic positivity in cells in seminiferous ducts. Antibody dilution: 1:500. Image and statement courtesy of the Human Protein Atlas (HPA).