

## Product datasheet for **TA590241**

### CD168 (HMMR) Rabbit Polyclonal Antibody

#### Product data:

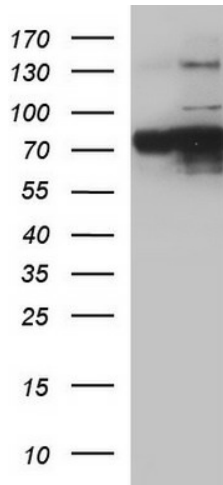
Product Type:	Primary Antibodies
Applications:	ELISA, WB
Recommended Dilution:	WB 1:20000,ELISA 1:100-1:2000
Reactivity:	Human
Host:	Rabbit
Isotype:	IgG
Clonality:	Polyclonal
Immunogen:	DNA immunization. This antibody is specific for the Middle Region of the target protein.
Formulation:	20 mM Potassium Phosphate, 150 mM Sodium Chloride, pH 7.0
Concentration:	1.01mg/ml
Purification:	Purified from mouse ascites fluids or tissue culture supernatant by affinity chromatography (protein A/G)
Conjugation:	Unconjugated
Storage:	Store at -20°C as received.
Stability:	Stable for 12 months from date of receipt.
Gene Name:	hyaluronan mediated motility receptor
Database Link:	<a href="#">NP_036616</a> <a href="#">Entrez Gene 3161 Human</a> <a href="#">O75330</a>
Background:	CD168 is involved in cell motility. When hyaluronan binds to HMMR, the phosphorylation of a number of proteins, including the focal adhesion kinase occurs. CD168 may also be involved in cellular transformation and metastasis formation, and in regulating extracellular-regulated kinase (ERK) activity.
Synonyms:	CD168; IHABP; RHAMM
Note:	This antibody was generated by SDIX's Genomic Antibody Technology® (GAT). <a href="#">Learn about GAT</a>
Protein Families:	Druggable Genome, Stem cell - Pluripotency



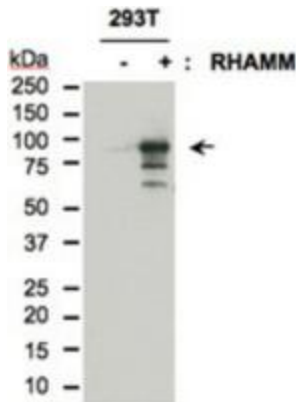
[View online »](#)

Protein Pathways: ECM-receptor interaction

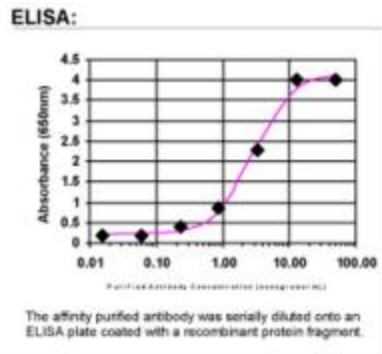
**Product images:**



HEK293T cells were transfected with the pCMV6-ENTRY control (Cat# [PS100001], Left lane) or pCMV6-ENTRY HMMR (Cat# [RC213321], Right lane) cDNA for 48 hrs and lysed. Equivalent amounts of cell lysates (5 ug per lane) were separated by SDS-PAGE and immunoblotted with anti-HMMR antibody (Cat# TA590241).



Western Blot: CD168 Antibody - Detection of HMMR in 293T cell extract using anti-human HMMR antibody (3500.00.02) at a dilution of 1:500 with a stock of 1 mg/mL and with donkey anti-rabbit HRP secondary antibody at a dilution of 1:10,000. Lane one (-): 293T cell extract. Lane two (+): 293T cells transfected with full length RHAMM. Cells were lysed with NP40 lysis buffer. 20ug proteins were loaded per lane. Depicted molecular weight of human HMMR is 84.1 kDa. Image courtesy of Yi-Chieh Nancy Du, Memorial Sloan-Kettering Cancer Center.



ELISA: CD168 Antibody