

Product datasheet for **TA590238**

KEAP1 Rabbit Polyclonal Antibody

Product data:

Product Type:	Primary Antibodies
Applications:	ELISA, IHC, WB
Recommended Dilution:	WB 1:5000~20000, IHC 1:150,ELISA 1:100-1:2000
Reactivity:	Human
Host:	Rabbit
Isotype:	IgG
Clonality:	Polyclonal
Immunogen:	DNA immunization. This antibody is specific for the N Terminus Region of the target protein.
Formulation:	20 mM Potassium Phosphate, 150 mM Sodium Chloride, pH 7.0
Concentration:	0.9mg/ml
Purification:	Purified from mouse ascites fluids or tissue culture supernatant by affinity chromatography (protein A/G)
Conjugation:	Unconjugated
Storage:	Store at -20°C as received.
Stability:	Stable for 12 months from date of receipt.
Gene Name:	kelch like ECH associated protein 1
Database Link:	NP_036421 Entrez Gene 9817 Human Q14145
Background:	KEAP1 retains NFE2L2/NRF2 in the cytosol. Functions as substrate adapter protein for the E3 ubiquitin ligase complex formed by CUL3 and RBX1. Targets NFE2L2/NRF2 for ubiquitination and degradation by the proteasome, thus resulting in the suppression of its transcriptional activity and the repression of antioxidant response element-mediated detoxifying enzyme gene expression. May also retain BPTF in the cytosol. Targets PGAM5 for ubiquitination and degradation by the proteasome.
Synonyms:	INrf2; KLHL19
Note:	This antibody was generated by SDIX's Genomic Antibody Technology® (GAT). Learn about GAT

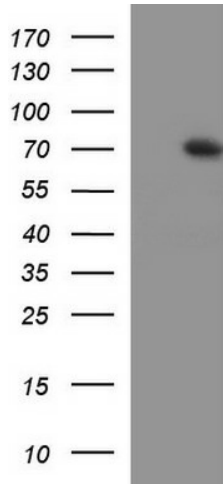


[View online »](#)

Protein Families: Transcription Factors

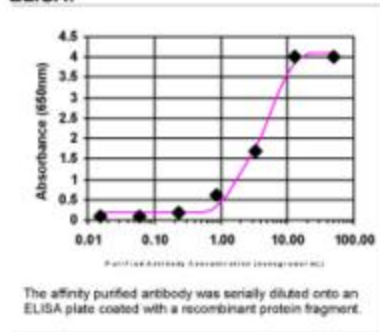
Protein Pathways: Ubiquitin mediated proteolysis

Product images:

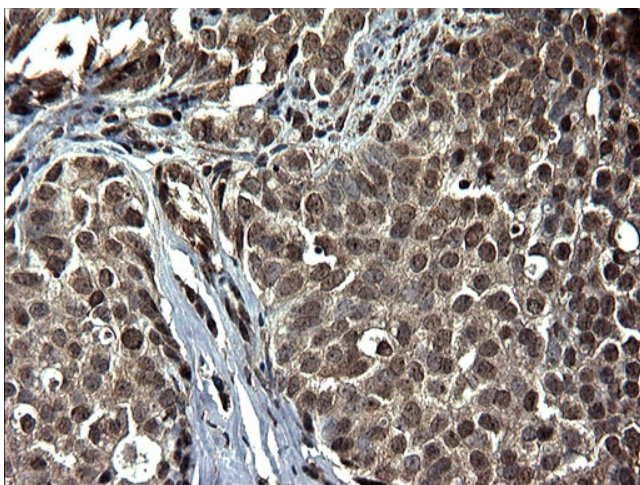


HEK293T cells were transfected with the pCMV6-ENTRY control (Cat# [PS100001], Left lane) or pCMV6-ENTRY KEAP1 (Cat# [RC202513], Right lane) cDNA for 48 hrs and lysed. Equivalent amounts of cell lysates (5 ug per lane) were separated by SDS-PAGE and immunoblotted with anti-KEAP1 (Cat# TA590238). Positive lysates [LY402183] (100ug) and [LC402183] (20ug) can be purchased separately from OriGene.

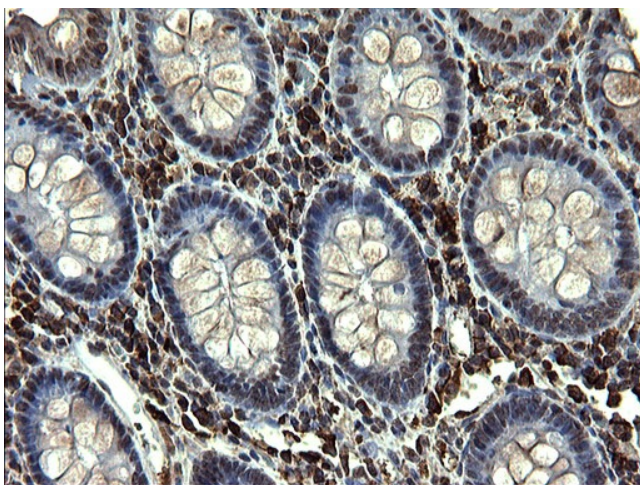
ELISA:



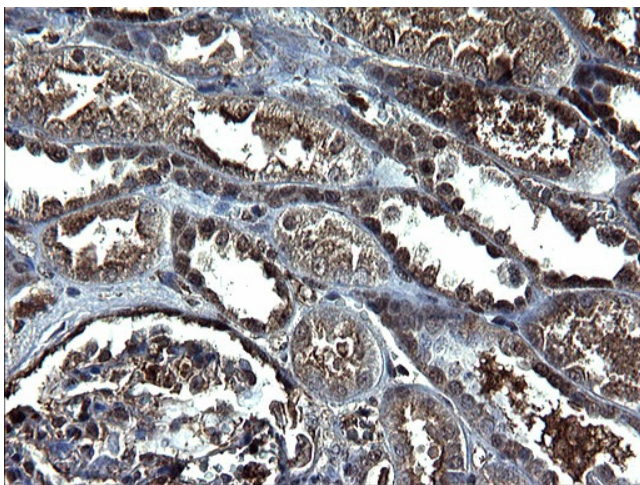
ELISA: KEAP1 Antibody



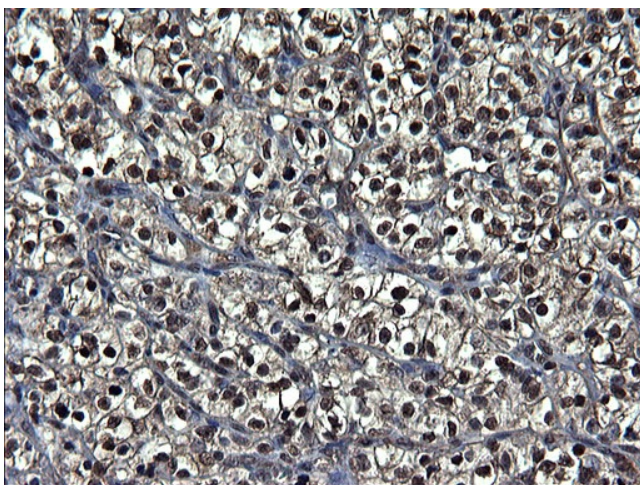
Immunohistochemical staining of paraffin-embedded Adenocarcinoma of Human breast tissue using anti-KEAP1 Rabbit Polyclonal antibody. (TA590238)



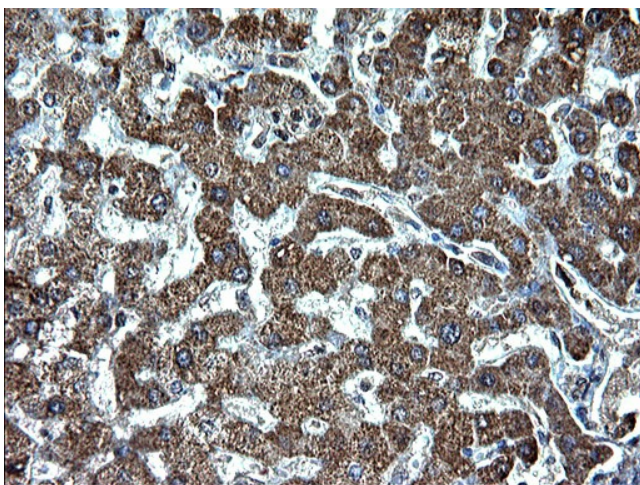
Immunohistochemical staining of paraffin-embedded Human colon tissue using anti-KEAP1 Rabbit Polyclonal antibody. (TA590238)



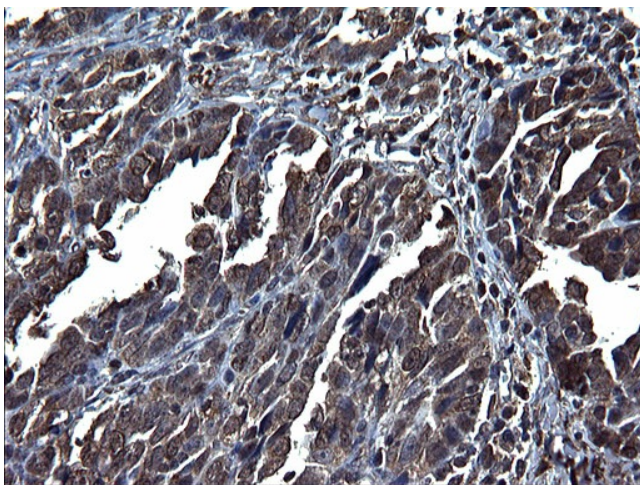
Immunohistochemical staining of paraffin-embedded Human Kidney tissue using anti-KEAP1 Rabbit Polyclonal antibody. (TA590238)



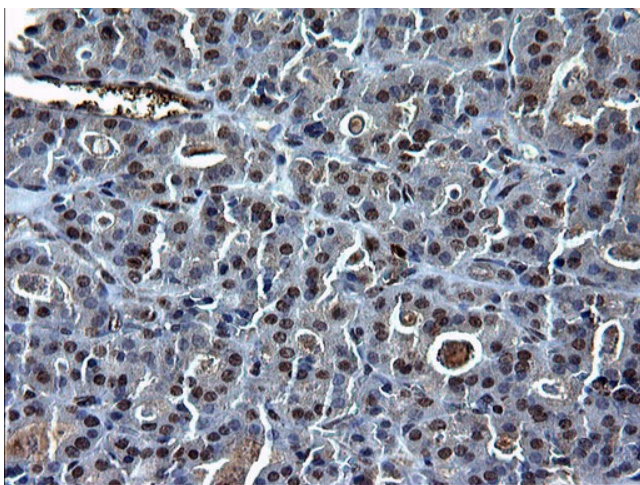
Immunohistochemical staining of paraffin-embedded Carcinoma of Human kidney tissue using anti-KEAP1 Rabbit Polyclonal antibody. (TA590238)



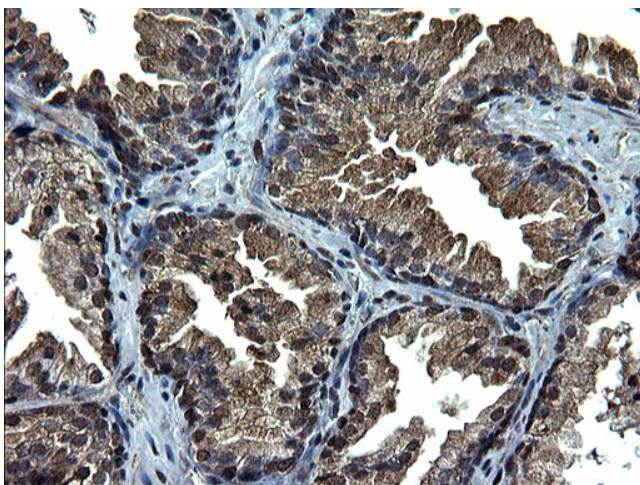
Immunohistochemical staining of paraffin-embedded Human liver tissue using anti-KEAP1 Rabbit Polyclonal antibody. (TA590238)



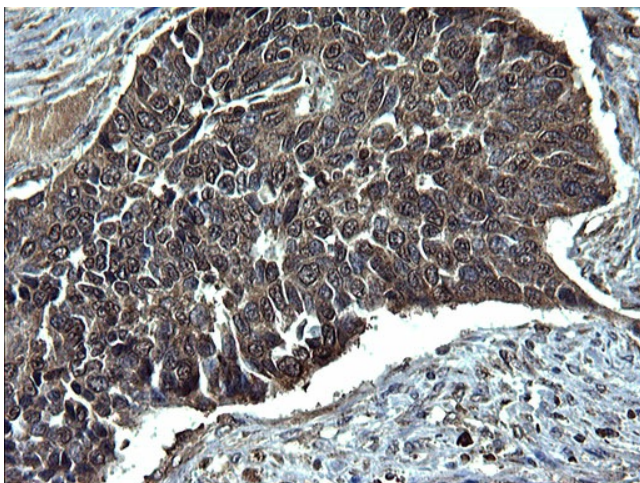
Immunohistochemical staining of paraffin-embedded Adenocarcinoma of Human ovary tissue using anti-KEAP1 Rabbit Polyclonal antibody. (TA590238)



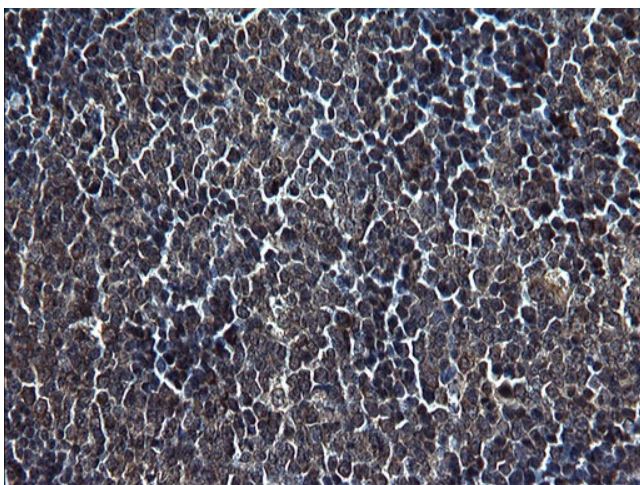
Immunohistochemical staining of paraffin-embedded Carcinoma of Human thyroid tissue using anti-KEAP1 Rabbit Polyclonal antibody. (TA590238)



Immunohistochemical staining of paraffin-embedded Human prostate tissue using anti-KEAP1 Rabbit Polyclonal antibody. (TA590238)



Immunohistochemical staining of paraffin-embedded Carcinoma of Human bladder tissue using anti-KEAP1 Rabbit Polyclonal antibody. (TA590238)



Immunohistochemical staining of paraffin-embedded Human lymph node tissue using anti-KEAP1 Rabbit Polyclonal antibody. (TA590238)