

Product datasheet for **TA590235**

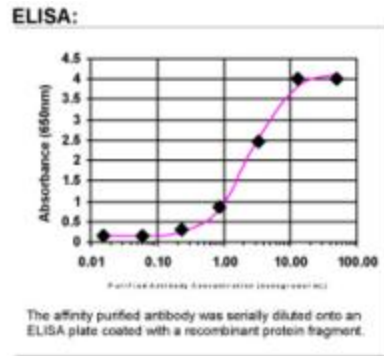
ABCF2 Rabbit Polyclonal Antibody

Product data:

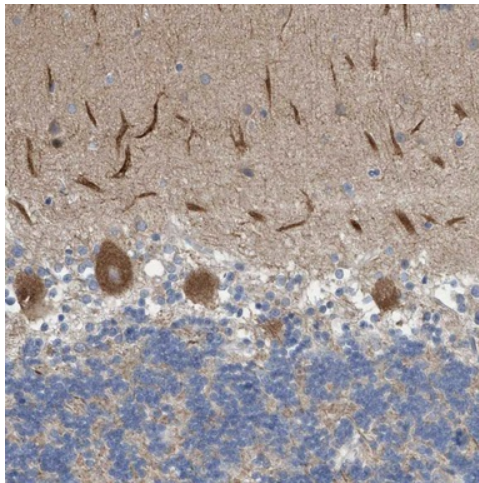
Product Type:	Primary Antibodies
Applications:	ELISA, IF, IHC, WB
Recommended Dilution:	WB 1:5000~20000, IHC 1:150,ELISA 1:100-1:2000
Reactivity:	Human, Rat
Host:	Rabbit
Isotype:	IgG
Clonality:	Polyclonal
Immunogen:	DNA immunization. This antibody is specific for the N Terminus Region of the target protein.
Formulation:	20 mM Potassium Phosphate, 150 mM Sodium Chloride, pH 7.0
Concentration:	0.72117 mg/ml
Purification:	Purified from mouse ascites fluids or tissue culture supernatant by affinity chromatography (protein A/G)
Conjugation:	Unconjugated
Storage:	Store at -20°C as received.
Stability:	Stable for 12 months from date of receipt.
Gene Name:	ATP binding cassette subfamily F member 2
Database Link:	NP_009120 Entrez Gene 311959 Rat Entrez Gene 10061 Human Q9UG63
Background:	ABCF2 is a member of the ABC Transporter superfamily and of the GCN20 subfamily. As a member of the ABC Transporter family, it functions to transport various molecules across extra- and intracellular membranes.
Synonyms:	ABC28; EST133090; HUSSY-18; HUSSY18
Note:	This antibody was generated by SDIX's Genomic Antibody Technology® (GAT). Learn about GAT
Protein Families:	Druggable Genome



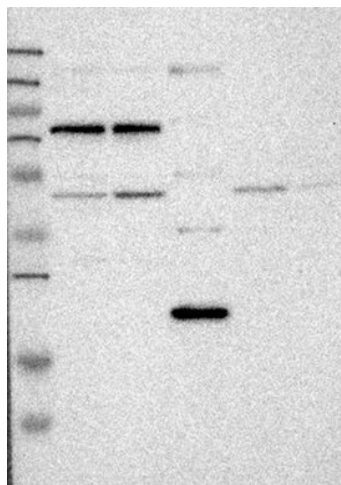
[View online »](#)

Product images:


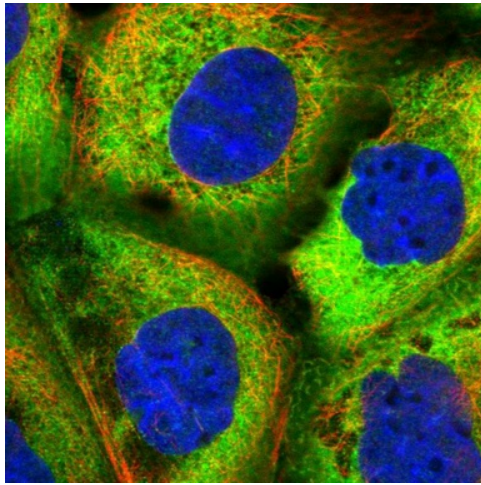
ELISA: ABCF2 Antibody



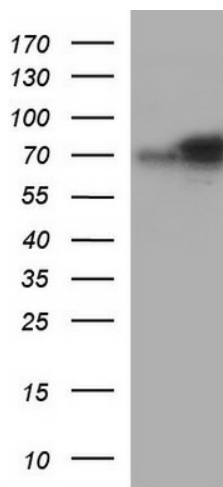
Immunohistochemical staining of human cerebellum shows distinct cytoplasmic positivity in Purkinje cells. This validation was performed by Protein Atlas and the presentation of data is for informational purposes only.



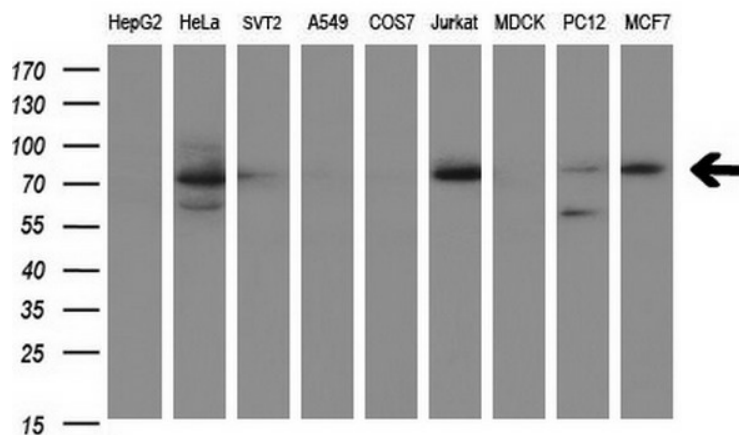
Lane 1: Marker [kDa] 250, 130, 95, 72, 55, 36, 28, 17, 11; Lane 2: RT-4; Lane 3: U-251 MG; Lane 4: Human Plasma; Lane 5: Liver; Lane 6: Tonsil. This validation was performed by Protein Atlas and the presentation of data is for informational purposes only.



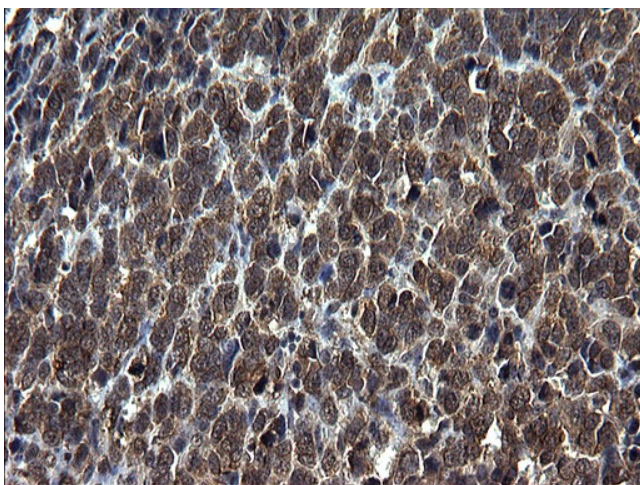
Immunofluorescent staining of human cell line A-431 shows positivity in cytoplasm. This validation was performed by Protein Atlas and the presentation of data is for informational purposes only.



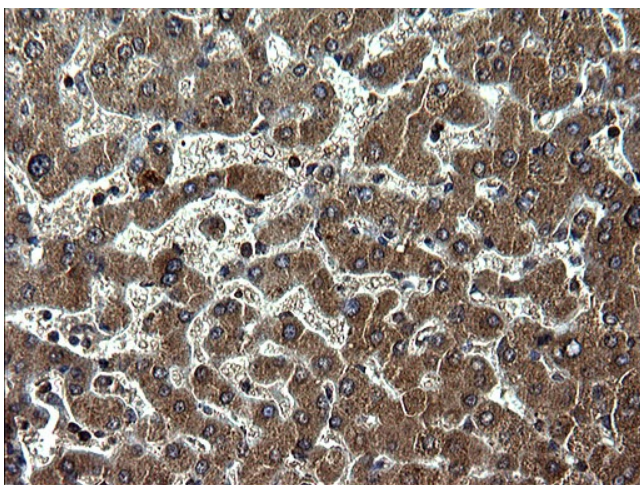
HEK293T cells were transfected with the pCMV6-ENTRY control (Left lane) or pCMV6-ENTRY ABCF2 ([RC200323], Right lane) cDNA for 48 hrs and lysed. Equivalent amounts of cell lysates (5 ug per lane) were separated by SDS-PAGE and immunoblotted with anti-ABCF2. Positive lysates [LY402100] (100ug) and [LC402100] (20ug) can be purchased separately from OriGene.



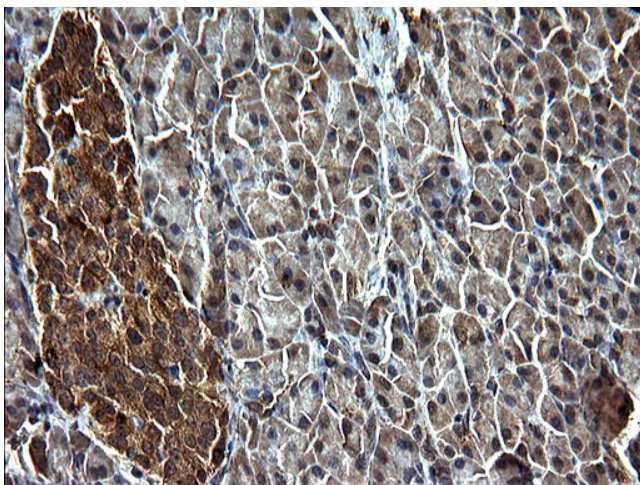
Western blot analysis of extracts (35ug) from 9 different cell lines by using anti-ABCF2 polyclonal antibody (HepG2: human; HeLa: human; SVT2: mouse; A549: human; COS7: monkey; Jurkat: human; MDCK: canine; PC12: rat; MCF7: human).



Immunohistochemical staining of paraffin-embedded Adenocarcinoma of Human colon tissue using anti-ABCF2 rabbit polyclonal antibody. (TA590235)



Immunohistochemical staining of paraffin-embedded Human liver tissue using anti-ABCF2 rabbit polyclonal antibody. (TA590235)



Immunohistochemical staining of paraffin-embedded Human pancreas tissue using anti-ABCF2 rabbit polyclonal antibody. (TA590235)



Immunohistochemical staining of paraffin-embedded Human endometrium tissue using anti-ABCF2 rabbit polyclonal antibody. (TA590235)