

## Product datasheet for **TA590234**

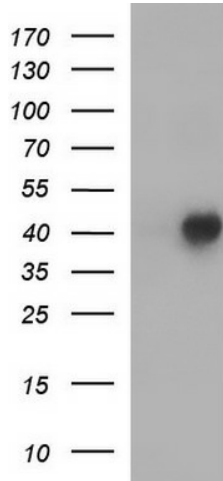
### **FSTL1 Rabbit Polyclonal Antibody**

#### **Product data:**

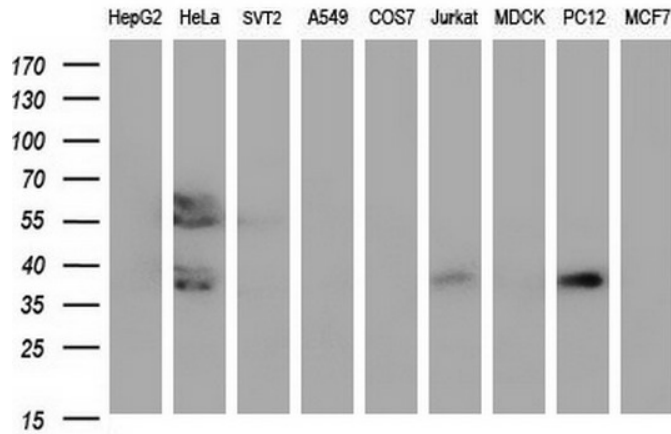
<b>Product Type:</b>	Primary Antibodies
<b>Applications:</b>	ELISA, WB
<b>Recommended Dilution:</b>	WB 1:5000~20000, ELISA 1:100-1:2000
<b>Reactivity:</b>	Human, Rat
<b>Host:</b>	Rabbit
<b>Isotype:</b>	IgG
<b>Clonality:</b>	Polyclonal
<b>Immunogen:</b>	DNA immunization. This antibody is specific for the C Terminus Region of the target protein.
<b>Formulation:</b>	20 mM Potassium Phosphate, 150 mM Sodium Chloride, pH 7.0
<b>Concentration:</b>	1.11022 mg/ml
<b>Purification:</b>	Purified from mouse ascites fluids or tissue culture supernatant by affinity chromatography (protein A/G)
<b>Conjugation:</b>	Unconjugated
<b>Storage:</b>	Store at -20°C as received.
<b>Stability:</b>	Stable for 12 months from date of receipt.
<b>Gene Name:</b>	follistatin like 1
<b>Database Link:</b>	<a href="#">NP_009016</a> <a href="#">Entrez Gene 79210 Rat</a> <a href="#">Entrez Gene 11167 Human</a> <a href="#">Q12841</a>
<b>Background:</b>	FSTL1 may modulate the action of some growth factors on cell proliferation and differentiation and also binds heparin.
<b>Synonyms:</b>	FRP; FSL1; MIR198; OCC-1; OCC1; tsc36
<b>Note:</b>	This antibody was generated by SDIX's Genomic Antibody Technology® (GAT). <a href="#">Learn about GAT</a>
<b>Protein Families:</b>	Secreted Protein



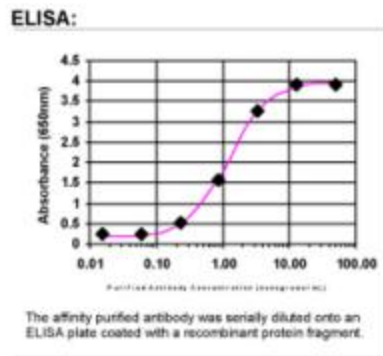
[View online »](#)

**Product images:**


HEK293T cells were transfected with the pCMV6-ENTRY control (Cat# [PS100001], Left lane) or pCMV6-ENTRY FSTL1 (Cat# [RC200586], Right lane) cDNA for 48 hrs and lysed. Equivalent amounts of cell lysates (5 ug per lane) were separated by SDS-PAGE and immunoblotted with anti-FSTL1(Cat# TA590234). Positive lysates [LY402088] (100ug) and [LC402088] (20ug) can be purchased separately from OriGene.



Western blot analysis of extracts (35ug) from 9 different cell lines by using anti-FSTL1 polyclonal antibody (HepG2: human; HeLa: human; SVT2: mouse; A549: human; COS7: monkey; Jurkat: human; MDCK: canine; PC12: rat; MCF7: human).



ELISA: FSTL1 Antibody