

Product datasheet for **TA590217**

14-3-3 sigma (SFN) Rabbit Polyclonal Antibody

Product data:

Product Type:	Primary Antibodies
Applications:	ELISA, IHC, WB
Recommended Dilution:	WB 1:20000, IHC 1:150, ELISA 1:100-1:2000
Reactivity:	Human
Host:	Rabbit
Isotype:	IgG
Clonality:	Polyclonal
Immunogen:	DNA immunization. This antibody is specific for the Middle Region of the target protein.
Formulation:	20 mM Potassium Phosphate, 150 mM Sodium Chloride, pH 7.0
Concentration:	0.94mg/ml
Purification:	Purified from mouse ascites fluids or tissue culture supernatant by affinity chromatography (protein A/G)
Conjugation:	Unconjugated
Storage:	Store at -20°C as received.
Stability:	Stable for 12 months from date of receipt.
Gene Name:	stratifin
Database Link:	NP_006133 Entrez Gene 2810 Human P31947
Background:	Members of the 14-3-3 family of proteins are highly conserved proteins, localized in neurons, and are axonally transported to the nerve terminals. They are also present, at lower levels, in various other eukaryotic tissues. 14-3-3 proteins appear to play important roles in a variety of signal transduction pathways, including those involved in cell cycle regulation and cell survival. Because 14-3-3 proteins bind to specific phosphoserine-containing sequences they are likely to have an important role in signaling pathways mediated by serine/threonine protein kinases. Evidence indicates 14-3-3 is required for Raf 1 kinase activity and phosphorylation among many other functions.
Synonyms:	YWHAS



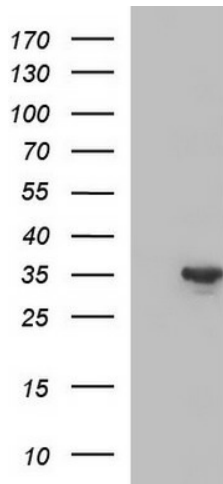
[View online »](#)

Note: This antibody was generated by SDIX's Genomic Antibody Technology® (GAT). [Learn about GAT](#)

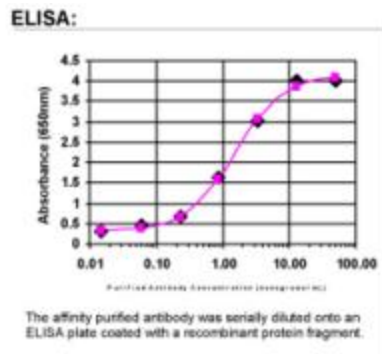
Protein Families: Druggable Genome, Secreted Protein

Protein Pathways: Cell cycle, p53 signaling pathway

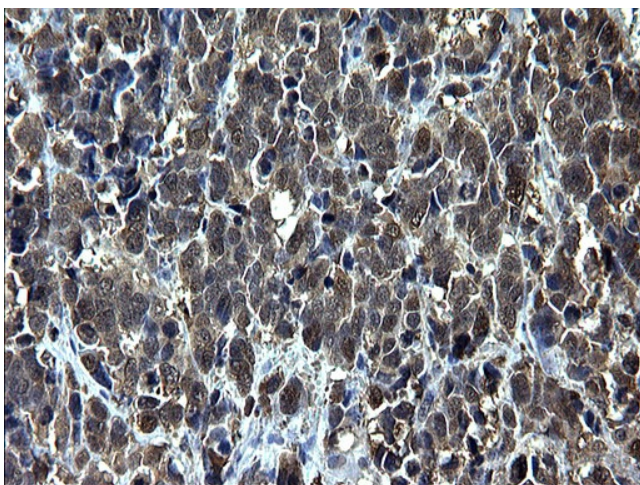
Product images:



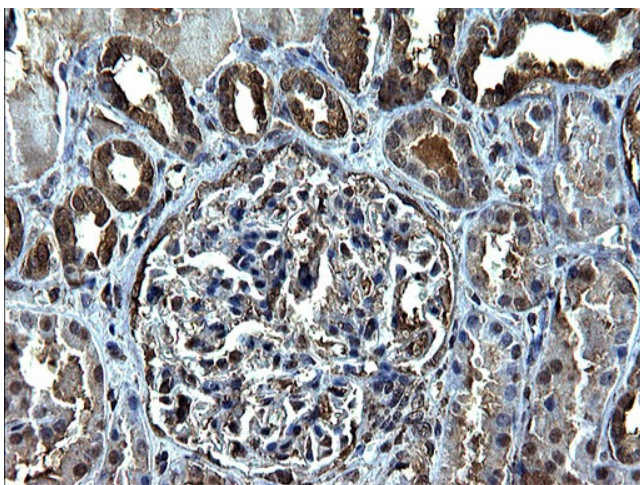
HEK293T cells were transfected with the pCMV6-ENTRY control (Cat# [PS100001], Left lane) or pCMV6-ENTRY SFN (Cat# [RC204045], Right lane) cDNA for 48 hrs and lysed. Equivalent amounts of cell lysates (5 ug per lane) were separated by SDS-PAGE and immunoblotted with anti-SFN (Cat# TA590217). Positive lysates [LY401850] (100ug) and [LC401850] (20ug) can be purchased separately from OriGene.



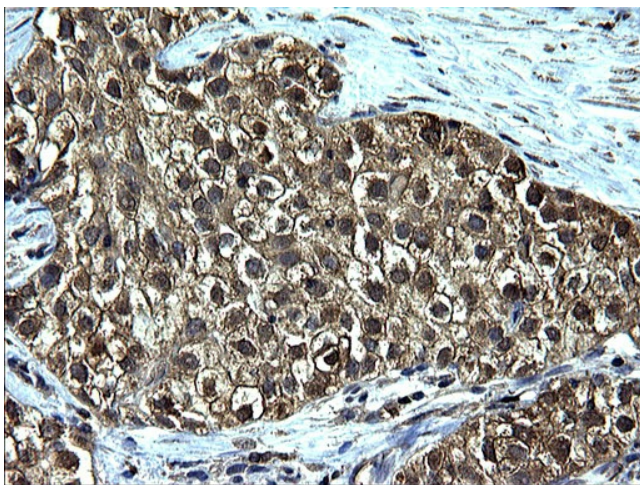
ELISA: 14-3-3 sigma Antibody



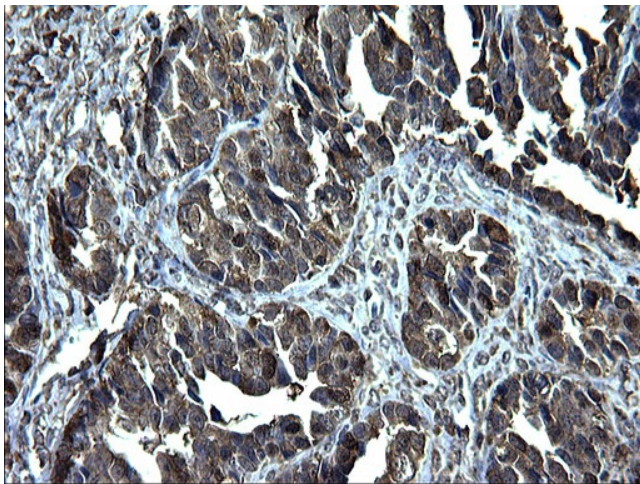
Immunohistochemical staining of paraffin-embedded Adenocarcinoma of Human colon tissue using anti-SFN Rabbit Polyclonal antibody. (TA590217)



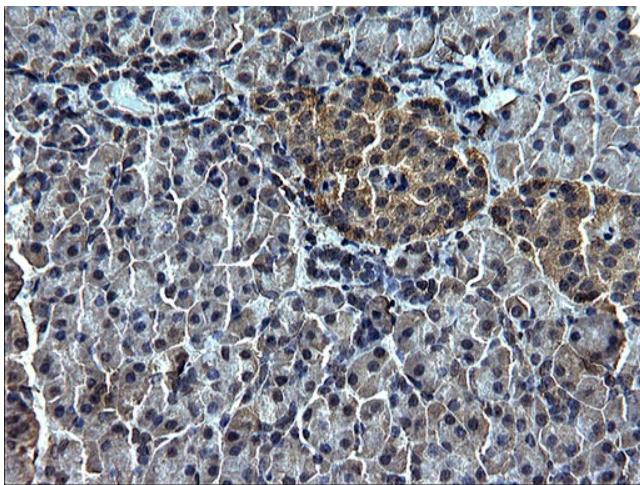
Immunohistochemical staining of paraffin-embedded Human Kidney tissue using anti-SFN Rabbit Polyclonal antibody. (TA590217)



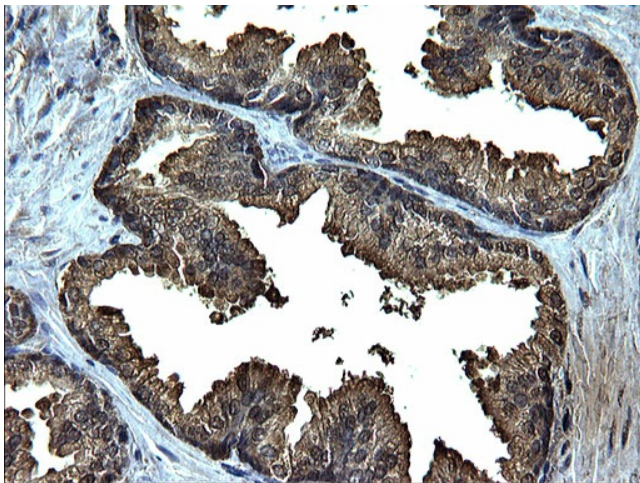
Immunohistochemical staining of paraffin-embedded Carcinoma of Human liver tissue using anti-SFN Rabbit Polyclonal antibody. (TA590217)



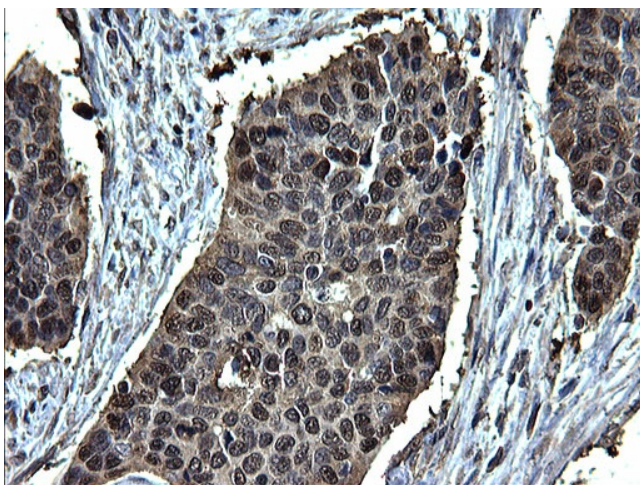
Immunohistochemical staining of paraffin-embedded Adenocarcinoma of Human ovary tissue using anti-SFN Rabbit Polyclonal antibody. (TA590217)



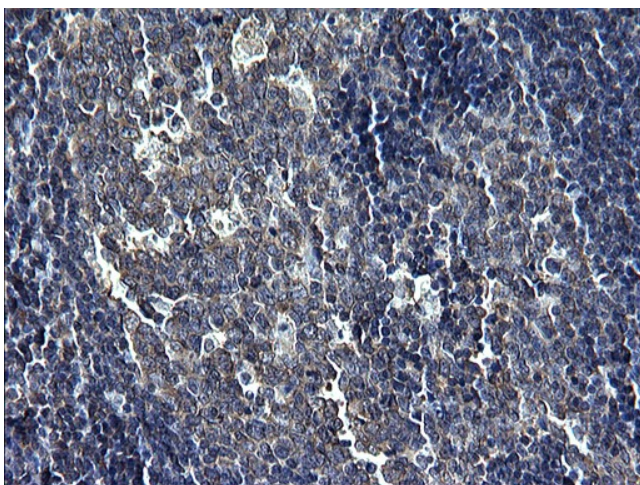
Immunohistochemical staining of paraffin-embedded Human pancreas tissue using anti-SFN Rabbit Polyclonal antibody. (TA590217)



Immunohistochemical staining of paraffin-embedded Human prostate tissue using anti-SFN Rabbit Polyclonal antibody. (TA590217)



Immunohistochemical staining of paraffin-embedded Carcinoma of Human bladder tissue using anti-SFN Rabbit Polyclonal antibody. (TA590217)



Immunohistochemical staining of paraffin-embedded Human lymph node tissue using anti-SFN Rabbit Polyclonal antibody. (TA590217)