

Product datasheet for TA590216

S100 alpha 2 (S100A2) Rabbit Polyclonal Antibody

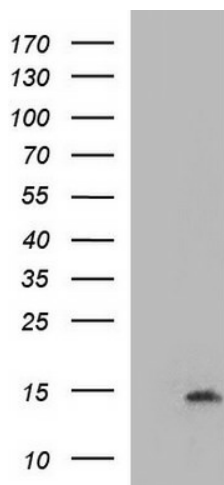
Product data:

Product Type:	Primary Antibodies
Applications:	ELISA, IHC, WB
Recommended Dilution:	WB 1:20000, IHC 1:150, ELISA 1:100-1:2000
Reactivity:	Human
Host:	Rabbit
Isotype:	IgG
Clonality:	Polyclonal
Immunogen:	DNA immunization. This antibody is specific for the entire range of the target protein.
Formulation:	20 mM Potassium Phosphate, 150 mM Sodium Chloride, pH 7.0
Concentration:	1.09mg/ml
Purification:	Purified from mouse ascites fluids or tissue culture supernatant by affinity chromatography (protein A/G)
Conjugation:	Unconjugated
Storage:	Store at -20°C as received.
Stability:	Stable for 12 months from date of receipt.
Gene Name:	S100 calcium binding protein A2
Database Link:	NP_005969 Entrez Gene 6273 Human P29034
Background:	This protein is a member of the S100 family of proteins containing 2 EF-hand calcium-binding motifs. S100 proteins are localized in the cytoplasm and/or nucleus of a wide range of cells, and involved in the regulation of a number of cellular processes such as cell cycle progression and differentiation. S100 genes include at least 13 members which are located as a cluster on chromosome 1q21. This protein may have a tumor suppressor function. Chromosomal rearrangements and altered expression of this gene have been implicated in breast cancer.
Synonyms:	CAN19; S100L

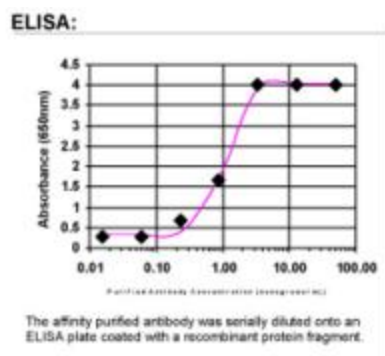

[View online »](#)

Note: This antibody was generated by SDIX's Genomic Antibody Technology® (GAT). [Learn about GAT](#)

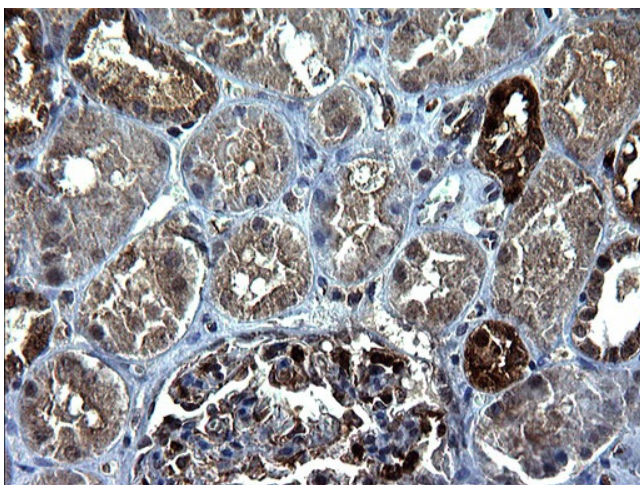
Product images:



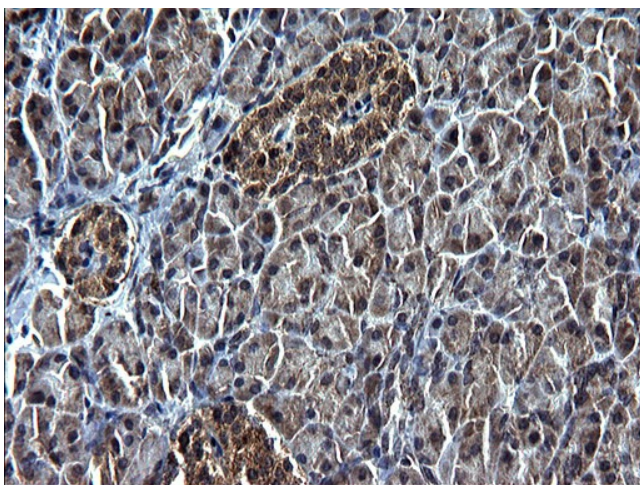
HEK293T cells were transfected with the pCMV6-ENTRY control (Cat# [PS100001], Left lane) or pCMV6-ENTRY S100A2 (Cat# [RC201203], Right lane) cDNA for 48 hrs and lysed. Equivalent amounts of cell lysates (5 ug per lane) were separated by SDS-PAGE and immunoblotted with anti-S100A (Cat# TA590216). Positive lysates [LY401808] (100ug) and [LC401808] (20ug) can be purchased separately from OriGene.



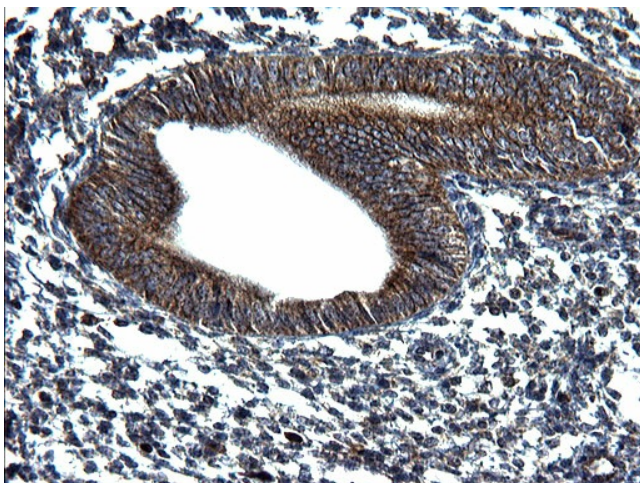
ELISA: S100 alpha 2 Antibody - Affinity Purified



Immunohistochemical staining of paraffin-embedded Human Kidney tissue using anti-S100A2 rabbit polyclonal antibody. (TA590216)



Immunohistochemical staining of paraffin-embedded Human pancreas tissue using anti-S100A2 rabbit polyclonal antibody. (TA590216)



Immunohistochemical staining of paraffin-embedded Human endometrium tissue using anti-S100A2 rabbit polyclonal antibody. (TA590216)