

## Product datasheet for **TA590213**

### MCM6 Rabbit Polyclonal Antibody

#### Product data:

Product Type:	Primary Antibodies
Applications:	ELISA, IHC, WB
Recommended Dilution:	WB 1:5000~20000, IHC 1:150, ELISA 1:100-1:2000
Reactivity:	Human, Dog, Monkey, Mouse
Host:	Rabbit
Isotype:	IgG
Clonality:	Polyclonal
Immunogen:	DNA immunization. This antibody is specific for the C Terminus Region of the target protein.
Formulation:	20 mM Potassium Phosphate, 150 mM Sodium Chloride, pH 7.0
Concentration:	1.07664 mg/ml
Purification:	Purified from mouse ascites fluids or tissue culture supernatant by affinity chromatography (protein A/G)
Conjugation:	Unconjugated
Storage:	Store at -20°C as received.
Stability:	Stable for 12 months from date of receipt.
Gene Name:	minichromosome maintenance complex component 6
Database Link:	<a href="#">NP_005906</a> <a href="#">Entrez Gene 17219 Mouse</a> <a href="#">Entrez Gene 476131 Dog</a> <a href="#">Entrez Gene 707651 Monkey</a> <a href="#">Entrez Gene 4175 Human</a> <a href="#">Q14566</a>
Background:	The protein encoded by this gene is one of the highly conserved mini-chromosome maintenance proteins (MCM) that are essential for the initiation of eukaryotic genome replication. The hexameric protein complex formed by the MCM proteins is a key component of the pre-replication complex (pre_RC) and may be involved in the formation of replication forks and in the recruitment of other DNA replication related proteins. The MCM complex consisting of this protein and MCM2, 4 and 7 proteins possesses DNA helicase activity, and may act as a DNA unwinding enzyme. The phosphorylation of the complex by CDC2 kinase reduces the helicase activity, suggesting a role in the regulation of DNA replication.



[View online »](#)

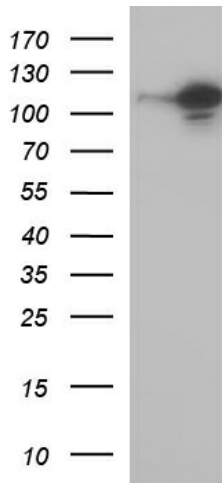
**Synonyms:** MCG40308; Mis5; P105MCM

**Note:** This antibody was generated by SDIX's Genomic Antibody Technology® (GAT). [Learn about GAT](#)

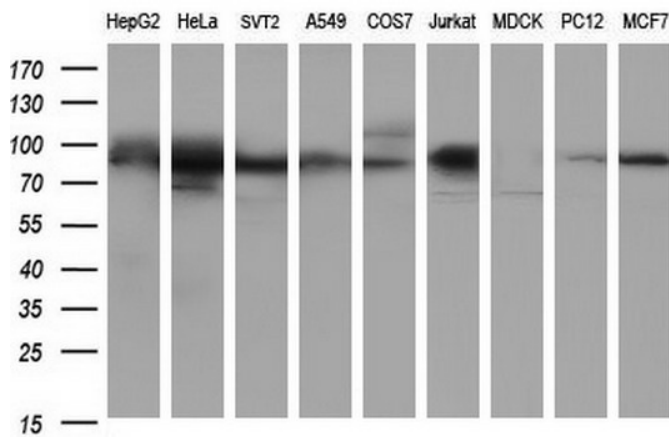
**Protein Families:** Stem cell - Pluripotency, Transcription Factors

**Protein Pathways:** Cell cycle, DNA replication

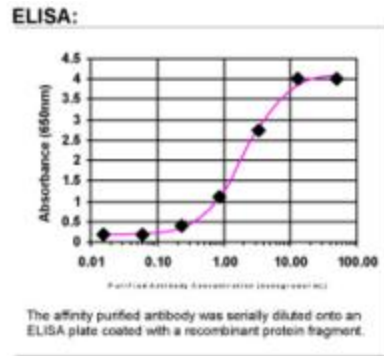
**Product images:**



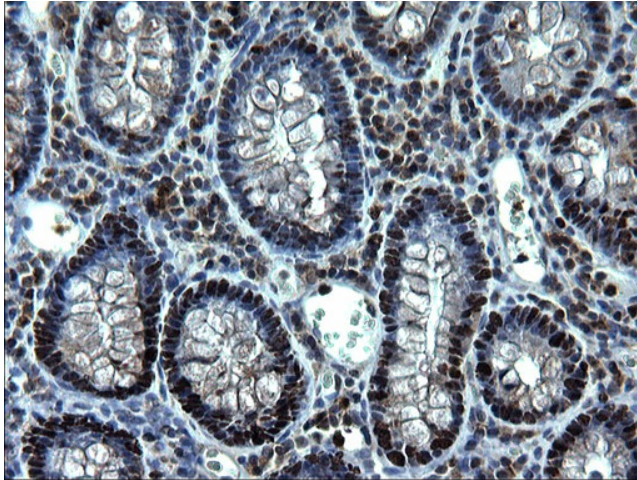
HEK293T cells were transfected with the pCMV6-ENTRY control (Cat# [PS100001], Left lane) or pCMV6-ENTRY MCM6 (Cat# [RC207097], Right lane) cDNA for 48 hrs and lysed. Equivalent amounts of cell lysates (5 ug per lane) were separated by SDS-PAGE and immunoblotted with anti-MCM6 (Cat# TA590213). Positive lysates [LY401786] (100ug) and [LC401786] (20ug) can be purchased separately from OriGene.



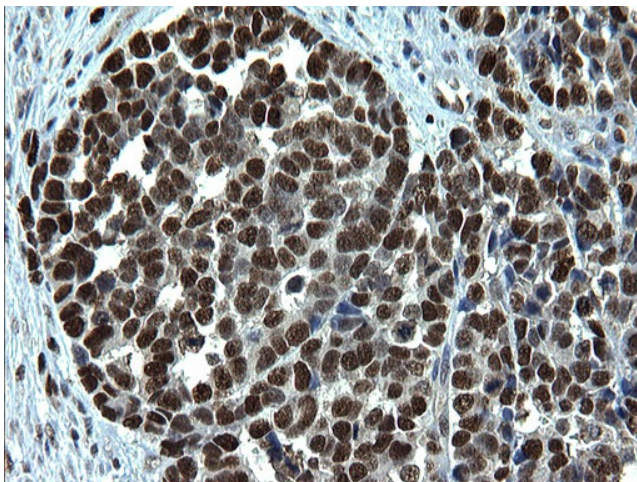
Western blot analysis of extracts (35ug) from 9 different cell lines by using anti-MCM6 polyclonal antibody (HepG2: human; HeLa: human; SVT2: mouse; A549: human; COS7: monkey; Jurkat: human; MDCK: canine; PC12: rat; MCF7: human).



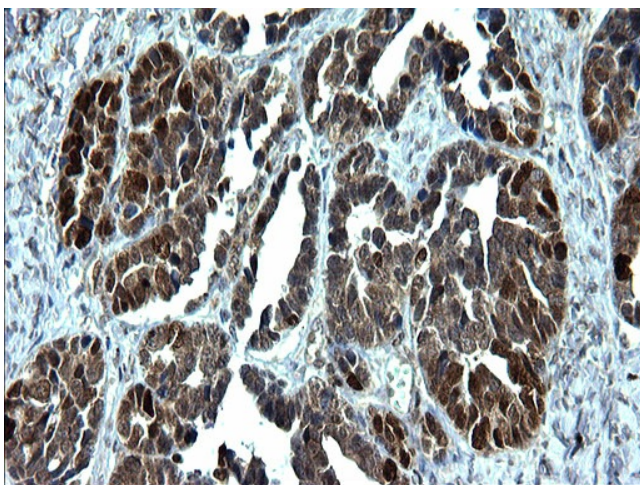
ELISA: MCM6 Antibody



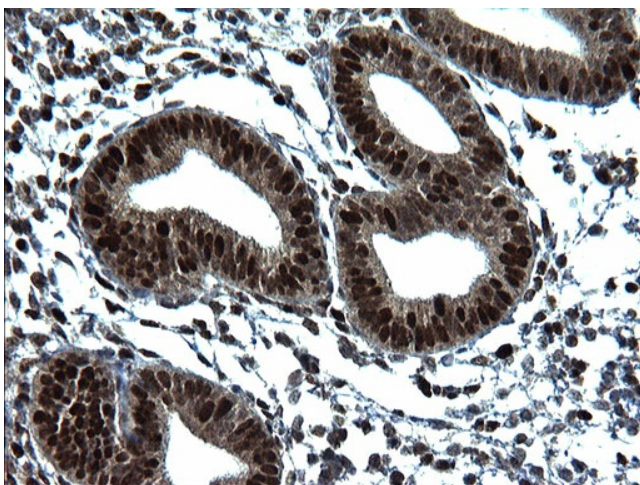
Immunohistochemical staining of paraffin-embedded Human colon tissue using anti-MCM6 rabbit polyclonal antibody. (TA590213)



Immunohistochemical staining of paraffin-embedded Adenocarcinoma of Human colon tissue using anti-MCM6 rabbit polyclonal antibody. (TA590213)



Immunohistochemical staining of paraffin-embedded Adenocarcinoma of Human ovary tissue using anti-MCM6 rabbit polyclonal antibody. (TA590213)



Immunohistochemical staining of paraffin-embedded Human endometrium tissue using anti-MCM6 rabbit polyclonal antibody. (TA590213)